

# California Adolescent Sexual Health Work Group (ASHWG) 2017 Data for California Adolescent Births, HIV/AIDS, STD

# ASHWG Data and Evaluation Sub-Committee

**Laura Kovaleski, Denise Gilson**

Sexually Transmitted Disease Control Branch  
California Department of Public Health

**Nannie Song, Kevin Sitter**

Office of AIDS, Center for Infectious Diseases  
California Department of Public Health

**Marina J. Chabot, Angela Bayer**

Maternal, Child, and Adolescent Health  
California Department of Public Health

**Robert Gilchick**

Los Angeles County Department of Public Health

**Mara Decker, Jennifer Yarger,**

Bixby Center for Global Reproductive Health  
University of California, San Francisco

**Maricel Miguelino, Patricia Lee**

California Department of Health Care Services

**Petra Jerman**

Public Health Institute

**Daniela Torres**

California Department of Education

**Eric Walsh-Buhi**

California State University, San Diego

The California Adolescent Sexual Health Work Group (ASHWG) is a standing work group of program managers from the California Department of Public Health, California Department of Education, and key non-governmental organizations committed to working more effectively to address the sexual and reproductive health of California adolescents. Its vision is to create a coordinated, collaborative, and integrated system among government and non-government organizations to promote and protect the sexual and reproductive health of youth in California.

The ASHWG Data and Evaluation Subcommittee's intention is to improve comparability and expand access to and use of HIV, STD, and Adolescent Birth data. Members of this Sub-committee include epidemiologists from California Department of Public Health branches of Sexually Transmitted Diseases (STD) Control, Office of AIDS (OA), Maternal, Child and Adolescent Health (MCAH) and non-governmental "end users" of their data.

The ASHWG Data Tables and Charts for Adolescent Births, HIV/AIDS and STD are presented with standardized data elements across all conditions, i.e. age, race, gender, and timeframe. The purpose is to make useable data readily available for improved program planning, implementation and evaluation by programs serving adolescents.

To prevent inadvertent or intentional identification of individuals in the presented data, a 3-year moving average has been used in accordance with the [California Health and Human Services Data De-Identification Guidelines](https://www.dhcs.ca.gov/dataandstats/Documents/DHCS-DDG-V2.0-120116.pdf) (<https://www.dhcs.ca.gov/dataandstats/Documents/DHCS-DDG-V2.0-120116.pdf>).

## Resources

- *Sexually Transmitted Disease Surveillance, 2017*. Atlanta: U.S. Department of Health and Human Services; 2018.  
[https://www.cdc.gov/std/stats17/2017-STD-Surveillance-Report\\_CDC-clearance-9.10.18.pdf](https://www.cdc.gov/std/stats17/2017-STD-Surveillance-Report_CDC-clearance-9.10.18.pdf)
- Centers for Disease Control and Prevention. HIV Surveillance in Adolescents and Young Adults (2010-2017):  
<https://www.cdc.gov/hiv/pdf/library/slidesets/cdc-hiv-surveillance-adolescents-young-adults-2018.pdf>
- *Prevalence of Sexually Transmitted Infections Among Female Adolescents Aged 14 to 19 in the United States*, Geraldine M. McQuillan, Stuart M. Berman and Lauri E. Markowitz, Sara E. Forhan, Sami L. Gottlieb, Maya R. Sternberg, Fujie Xu, S. Deblina Datta, *Pediatrics*, Volume 124, Number 6, December 2009.  
<http://pediatrics.aappublications.org/cgi/content/abstract/peds.2009-0674v1>
- Adolescent Birth Rates, Percentage of Repeat Births and Births in High Poverty Areas by Medical Service Study Area: California, Aggregated 2010-2012. Chabot MJ, Campa M, Barr L, Damesyn M. California Department of Public Health, Maternal, Child and Adolescent Health Division. Sacramento CA, 2015.  
<https://archive.cdph.ca.gov/data/statistics/Pages/CAMSSAreport.aspx>

## Additional Resources

- Adolescent Births in California, 2010-2017. California Department of Public Health, Maternal, Child and Adolescent Health Division. Sacramento CA, October, 2019.  
<https://www.cdph.ca.gov/Programs/CFH/DMCAH/CDPH%20Document%20Library/Data/Adolescent/Adolescent-Birth-Rates-2017.pdf>
- Adolescent Sexual and Reproductive Health County Profile. California Department of Public Health, Maternal, Child and Adolescent Health Division. Sacramento CA, 2017.  
<https://www.cdph.ca.gov/Programs/CFH/DMCAH/Pages/Data/Adolescent-Health-County-Profile.aspx>
- California Adolescent Sexual Needs Health Index (CASHNI), 2014. California Department of Public Health, Maternal, Child and Adolescent Health Division. Sacramento CA, 2016.  
<https://www.cdph.ca.gov/Programs/CFH/DMCAH/CDPH%20Document%20Library/Data/Adolescent/CA-Adolescent-Sexual-Health-Needs-Index-2014.pdf>

# Moving 3-year Average Birth Rates for Females Age 10-24 by Mother's Age, California, 2008–2017

Adolescent Birth Rates* and Births by Mother's Age 2008–2017										
Age Group	2008		2009		2010		2011		2012	
	Births	Birth Rate	Births	Birth Rate	Births	Birth Rate	Births	Birth Rate	Births	Birth Rate
10-14	656	0.5	612	0.5	535	0.4	469	0.4	406	0.3
15-17	17,266	21.4	16,669	20.6	15,245	18.9	13,522	16.9	11,835	14.7
18-19	35,356	67.3	34,300	64.2	32,303	59.1	29,567	52.4	26,957	46.5
15-19	52,622	39.5	50,969	38.0	47,547	35.1	43,089	31.5	38,792	28.1
20-24	126,466	96.7	121,396	92.6	114,615	87.1	108,197	81.8	103,918	77.7

Age Group	2013		2014		2015		2016		2017	
	Births	Birth Rate	Births	Birth Rate	Births	Birth Rate	Births	Birth Rate	Births	Birth Rate
10-14	367	0.3	301	0.2	254	0.2	214	0.2	189	0.2
15-17	10,241	12.7	8,736	10.9	7,432	9.4	6,465	8.2	5,618	7.2
18-19	24,342	41.4	22,080	37.3	19,803	33.6	17,745	30.2	15,899	27.4
15-19	34,583	24.8	30,816	22.2	27,235	19.7	24,209	17.6	21,517	15.8
20-24	100,262	73.8	97,417	70.1	93,226	65.7	88,902	61.7	83,220	57.3

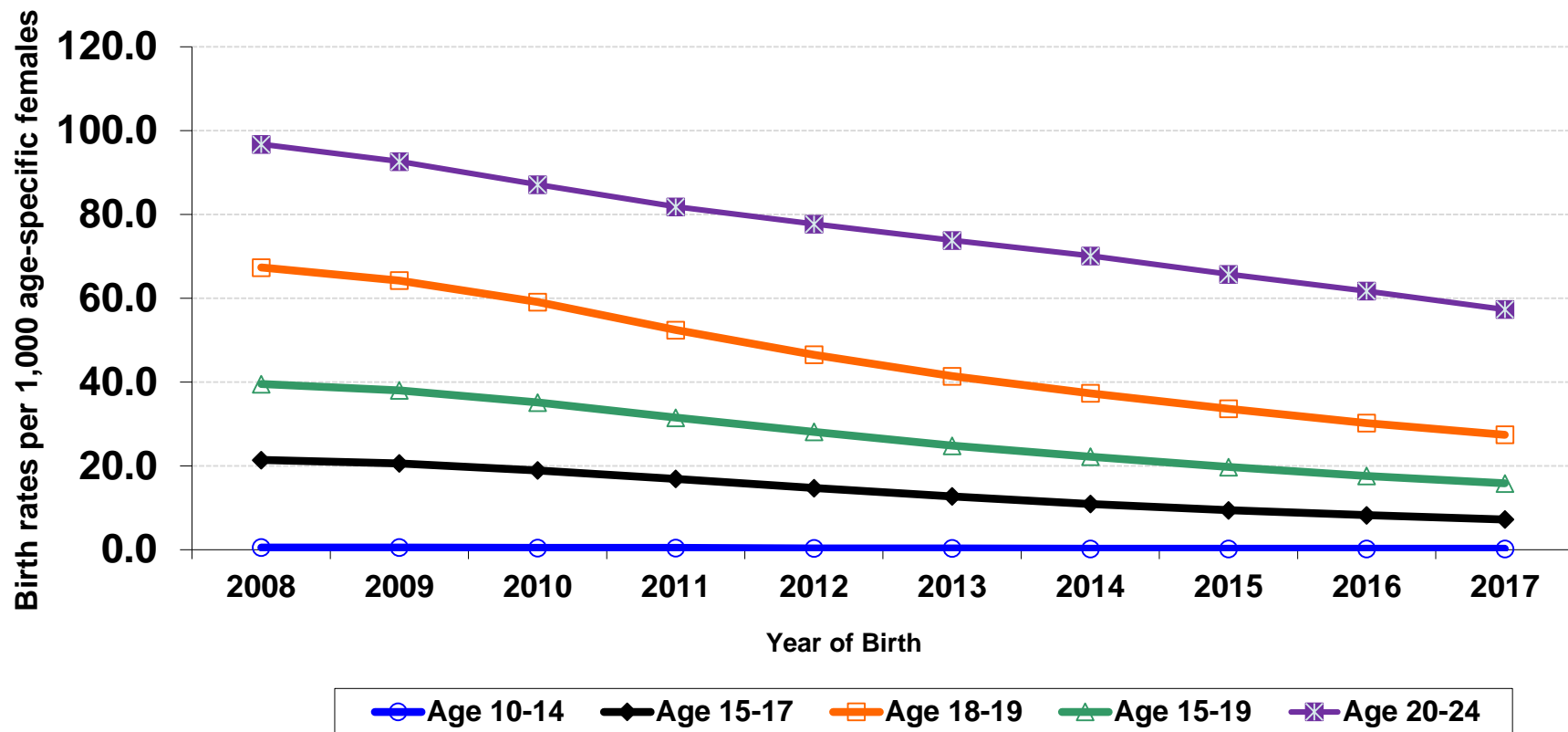
\*Rate per 1,000 age-specific females. Aggregated three-year birth records and population were used to calculate birth rate; the number of births shown have been averaged over 3 years. Each year displayed in the table is the endpoint of a 3-year period such that 2008 number of births is the average of 2006-2008, 2009 number of births is the average of 2007-2009, etc. The total shown for ages 15-19 may not be the exact numbers when ages 15-17 and 18-19 are summed due to rounding.

Data Sources: Births: *Birth Statistical Master File*, 2006-2017 California Department of Public Health, Center for Health Statistics and Informatics. Population: California Department of Finance. Demographic Research Unit. 2019. State and county population projections 2010-2060 [P-3: State and County Projections Dataset]. Sacramento. March 2019.

Notes: The California birth rates presented here differ from the rates computed on the basis of other population estimates such as those published by the National Center for Health Statistics. These revised rates differ and should not be compared to rates published previously, which may have used an older version of population data. The Maternal, Child and Adolescent Health Division follows the Health and Human Services Agency's Data De-Identification Guidelines (DDG).

Prepared by: California Department of Public Health, Maternal, Child and Adolescent Health Division, Epidemiology, Surveillance and Federal Reporting Branch.

# Moving 3-year Average Birth Rates for Females Age 10-24 by Mother's Age, California, 2008–2017



Data Sources: Births: *Birth Statistical Master File*, 2006-2017 California Department of Public Health, Center for Health Statistics and Informatics. Population: California Department of Finance. Demographic Research Unit. 2019. State and county population projections 2010-2060 [P-3: State and County Projections Dataset]. Sacramento. March 2019.

Notes: The California birth rates presented here differ from the rates computed on the basis of other population estimates such as those published by the National Center for Health Statistics. These revised rates differ and should not be compared to rates published previously, which may have used an older version of population data. The Maternal, Child and Adolescent Health Division follows the Health and Human Services Agency's Data De-Identification Guidelines (DDG).

Prepared by: California Department of Public Health, Maternal, Child and Adolescent Health Division, Epidemiology, Surveillance and Federal Reporting Branch.

# Moving 3-year Average Birth Rates for Females Age 15-19 by Race/Ethnicity, California, 2008–2017

Adolescent Birth Rates* and Births by Race/Ethnicity, For California Females Age 15-19, 2008–2017										
Race/Ethnicity	2008		2009		2010		2011		2012	
	Births	Birth Rate	Births	Birth Rate	Births	Birth Rate	Births	Birth Rate	Births	Birth Rate
White	6,934	15.6	6,554	15.1	6,013	14.0	5,305	12.4	4,679	10.9
African American/Black	4,137	44.7	4,003	43.2	3,724	40.9	3,348	37.3	2,971	33.5
Native American/Alaskan Native	270	40.3	264	39.8	243	37.8	213	33.8	188	30.5
Asian/Pacific Islander	1,548	10.1	1,440	9.5	1,265	8.2	1,093	6.9	946	5.8
Hispanic/Latino	38,168	64.5	37,035	60.3	34,644	55.2	31,567	49.4	28,540	44.1

Race/Ethnicity	2013		2014		2015		2016		2017	
	Births	Birth Rate	Births	Birth Rate	Births	Birth Rate	Births	Birth Rate	Births	Birth Rate
White	4,064	9.5	3,582	8.5	3,137	7.5	2,760	6.7	2,416	6.0
African American/Black	2,626	29.5	2,276	25.7	1,949	22.4	1,650	19.3	1,430	17.0
Native American/Alaskan Native	173	27.8	163	26.6	142	23.6	120	20.2	100	17.2
Asian/Pacific Islander	823	5.0	721	4.4	618	3.9	514	3.3	417	2.7
Hispanic/Latino	25,549	38.9	22,827	34.6	20,290	30.7	18,128	27.4	16,214	24.5

\*Rate per 1,000 age-specific females. Aggregated three-year birth records and population were used to calculate birth rate; the number of births shown have been averaged over 3 years. Each year displayed in the table is the endpoint of a 3-year period such that 2008 number of births is the average of 2006-2008, 2009 number of births is the average of 2007-2009, etc.

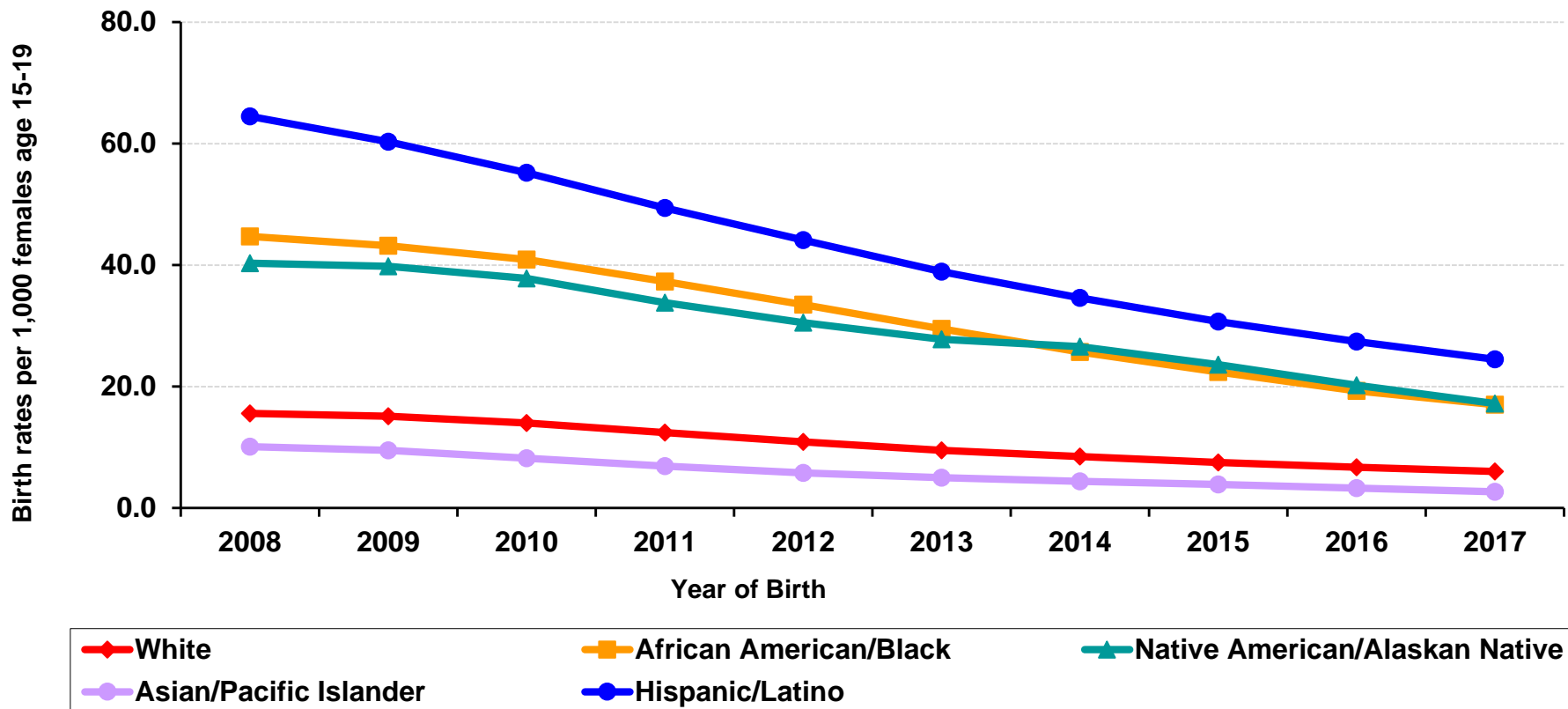
Data Sources: Births: *Birth Statistical Master File*, 2006-2017 California Department of Public Health, Center for Health Statistics and Informatics. Population: California Department of Finance. Demographic Research Unit. 2019. State and county population projections 2010-2060 [P-3: State and County Projections Dataset]. Sacramento. March 2019.

Notes: The California birth rates presented here differ from the rates computed on the basis of other population estimates such as those published by the National Center for Health Statistics. These revised rates differ and should not be compared to rates published previously, which may have used an older version of population data. The Maternal, Child and Adolescent Health Division follows the Health and Human Services Agency's Data De-Identification Guidelines (DDG).

Prepared by: California Department of Public Health, Maternal, Child and Adolescent Health Division, Epidemiology, Surveillance and Federal Reporting Branch.



## Moving 3-year Average Birth Rates for Females Age 15-19 by Race/Ethnicity, California, 2008–2017



Data Sources: Births: *Birth Statistical Master File*, 2006-2017 California Department of Public Health, Center for Health Statistics and Informatics. Population: California Department of Finance. Demographic Research Unit. 2019. State and county population projections 2010-2060 [P-3: State and County Projections Dataset]. Sacramento. March 2019.

Notes: The California birth rates presented here differ from the rates computed on the basis of other population estimates such as those published by the National Center for Health Statistics. These revised rates differ and should not be compared to rates published previously, which may have used an older version of population data. The Maternal, Child and Adolescent Health Division follows the Health and Human Services Agency's Data De-Identification Guidelines (DDG).

Prepared by: California Department of Public Health, Maternal, Child and Adolescent Health Division, Epidemiology, Surveillance and Federal Reporting Branch.

# Moving 3-year Average Birth Rates for Females Age 20-24 by Race/Ethnicity, California, 2008–2017

Birth Rates* and Births by Race/Ethnicity, For California Females Age 20-24, 2008–2017										
Race/Ethnicity	2008		2009		2010		2011		2012	
	Births	Birth Rate	Births	Birth Rate	Births	Birth Rate	Births	Birth Rate	Births	Birth Rate
White	26,136	55.7	24,798	53.4	23,465	52.3	22,312	51.7	21,229	50.6
African American/Black	8,607	106.6	8,521	103.8	8,402	100.3	8,216	96.1	7,962	91.6
Native American/Alaskan Native	632	104.0	598	98.7	579	96.6	548	92.6	529	90.0
Asian/Pacific Islander	6,713	39.0	6,392	37.7	5,917	35.3	5,447	32.8	5,212	31.4
Hispanic/Latino	80,630	148.1	77,202	139.8	72,329	126.7	67,776	114.7	65,023	106.0

Race/Ethnicity	2013		2014		2015		2016		2017	
	Births	Birth Rate	Births	Birth Rate	Births	Birth Rate	Births	Birth Rate	Births	Birth Rate
White	20,077	47.7	18,963	44.6	17,706	41.3	16,416	38.0	15,008	34.8
African American/Black	7,611	86.4	7,152	79.8	6,603	72.6	6,071	66.3	5,594	61.3
Native American/Alaskan Native	514	87.3	494	82.5	464	76.6	421	68.6	381	61.8
Asian/Pacific Islander	5,033	30.2	4,969	29.7	4,691	27.8	4,397	25.9	3,974	23.4
Hispanic/Latino	63,056	100.0	61,839	95.0	59,909	89.2	57,640	83.8	54,471	77.9

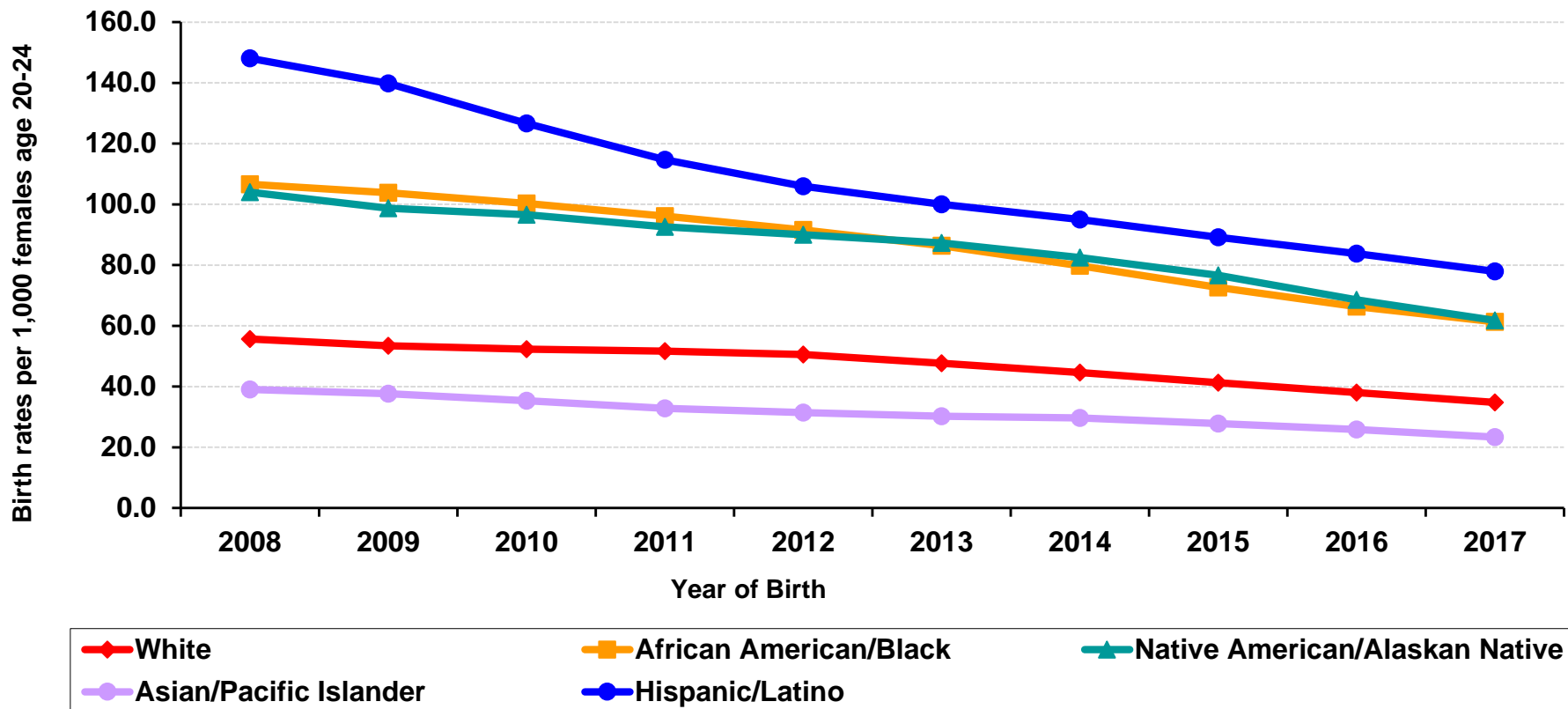
\*Rate per 1,000 age-specific females. Aggregated three-year birth records and population were used to calculate birth rate; the number of births shown have been averaged over 3 years. Each year displayed in the table is the endpoint of a 3-year period such that 2008 number of births is the average of 2006-2008, 2009 number of births is the average of 2007-2009, etc.

Data Sources: Births: *Birth Statistical Master File*, 2001-2015 California Department of Public Health, Center for Health Statistics and Informatics. Population: State of California, Department of Finance, *State and County Population Projections by Race/Ethnicity, Sex, and Age 2010-2060*, Sacramento, California, March 2018.

Notes: The California birth rates presented here differ from the rates computed on the basis of other population estimates such as those published by the National Center for Health Statistics. These revised rates differ and should not be compared to rates published previously, which were based on the California Department of Finance population projections as of July 2007, January 2013, or December 2014. Rates are not computed for fewer than 20 events.

Prepared by: California Department of Public Health, Maternal, Child and Adolescent Health Division, Epidemiology, Surveillance and Federal Reporting Branch.

## Moving 3-year Average Birth Rates for Females Age 20-24 by Race/Ethnicity, California, 2008–2017



Data Sources: Births: *Birth Statistical Master File*, 2006-2017 California Department of Public Health, Center for Health Statistics and Informatics. Population: California Department of Finance. Demographic Research Unit. 2019. State and county population projections 2010-2060 [P-3: State and County Projections Dataset]. Sacramento. March 2019.

Notes: The California birth rates presented here differ from the rates computed on the basis of other population estimates such as those published by the National Center for Health Statistics. These revised rates differ and should not be compared to rates published previously, which may have used an older version of population data. The Maternal, Child and Adolescent Health Division follows the Health and Human Services Agency's Data De-Identification Guidelines (DDG).

Prepared by: California Department of Public Health, Maternal, Child and Adolescent Health Division, Epidemiology, Surveillance and Federal Reporting Branch.

## Adolescents/young adults living with diagnosed HIV infection by birth sex, race/ethnicity and age group, California, 2015-2017

Age Group by Race/Ethnicity	Female		Male	
	Cases	Rate	Cases	Rate
<b>African American/Black</b>				
Ages 10 - 14	19	28.3	23	33.0
15 - 19	37	45.9	67	76.7
20 - 24	136	144.9	628	595.3
<b>Hispanic/Latino</b>				
Ages 10 - 14	22	3.4	13	1.9
15 - 19	54	8.0	118	16.8
20 - 24	171	24.8	1282	173.3
<b>White</b>				
Ages 10 - 14	12	3.4	7	1.9
15 - 19	14	3.6	37	8.8
20 - 24	64	14.5	480	98.0
<b>Other/Unknown</b>				
Ages 10 - 14	8	4.2	10	4.6
15 - 19	11	5.2	21	9.1
20 - 24	27	11.9	256	106.4
<b>Totals</b>				
Ages 10 - 14	61	4.9	52	4.0
15 - 19	117	8.5	242	16.9
20 - 24	399	27.5	2646	167.9

Rates are per 100,000 age- and gender-specific population.

For data de-identification purposes, cases have been averaged over three years then divided by the average population for the same three years to calculate the rate.

Due to rounding, combining case counts for ages 15-17 and 18-19 may not equal case counts for ages 15-19.

Race 'Other' includes Asian, 'American Indian/Alaska Native', 'Native Hawaiian/Pacific Islanders', Multiple Races, and 'Unknown' races.

Age group is based on the age at the end of the specified calendar year.

Includes all cases diagnosed with HIV infection whose last known residence was in California.

Persons living with diagnosed HIV infection are presumed to be alive, unless a date of death is available in the California HIV surveillance data system.

Data Source: California Department of Public Health, Office of AIDS, Surveillance Section

Population: State of California, Department of Finance, Report P-3: State and County Population Projections by Race/Ethnicity, Detailed Age, and Gender, 2010-2060. Accessed: Sacramento, California, May 2018

<http://dof.ca.gov/Forecasting/Demographics/Projections/>

Prepared by: California Department of Public Health, Office of AIDS, Surveillance Section

# Adolescents/young adults living with diagnosed HIV infection who were likely to have been infected through sexual transmission by birth sex, race/ethnicity, and age group, California, 2015-2017

Age Group by Race/Ethnicity	Female		Male	
	Cases	Rate	Cases	Rate
<b>African American/Black</b>				
Ages 10 - 14	0	0.0	0	0.0
15 - 19	10	12.7	38	43.9
20 - 24	66	69.8	552	523.0
<b>Hispanic/Latino</b>				
Ages 10 - 14	0	0.0	1	0.1
15 - 19	15	2.2	80	11.4
20 - 24	96	13.9	1169	158.1
<b>White</b>				
Ages 10 - 14	0	0.0	0	0.0
15 - 19	4	0.7	28	6.7
20 - 24	36	8.3	423	86.3
<b>Other/Unknown</b>				
Ages 10 - 14	0	0.0	0	0.0
15 - 19	3	1.4	16	6.9
20 - 24	17	7.5	231	96.0
<b>Totals</b>				
Ages 10 - 14	0	0.0	1	0.1
15 - 19	30	2.2	162	11.3
20 - 24	215	14.8	2375	150.7

Rates are per 100,000 age- and gender-specific population.

For data de-identification purposes, cases have been averaged over three years then divided by the average population for the same three years to calculate the rate.

Due to rounding, combining case counts for ages 15-17 and 18-19 may not equal case counts for ages 15-19.

Race 'Other' includes Asian, 'American Indian/Alaska Native', 'Native Hawaiian/Pacific Islanders', Multiple Races and 'Unknown' races.

Age group is based on the age at the end of the specified calendar year.

Cases attributable to sexual transmission (heterosexual contact, male-to-male sexual contact (MMSC), MMSC and Injection Drug Use (IDU)) are included. Nonsexual risk behavior (IDU, Perinatal, Unknown Risk & Other (blood transfusion, receiving a transplant, occupational exposures)) are excluded.

Includes all cases diagnosed with HIV infection whose last known residence was in California.

Persons living with diagnosed HIV infection are presumed to be alive, unless a date of death is available in the California HIV surveillance data system.

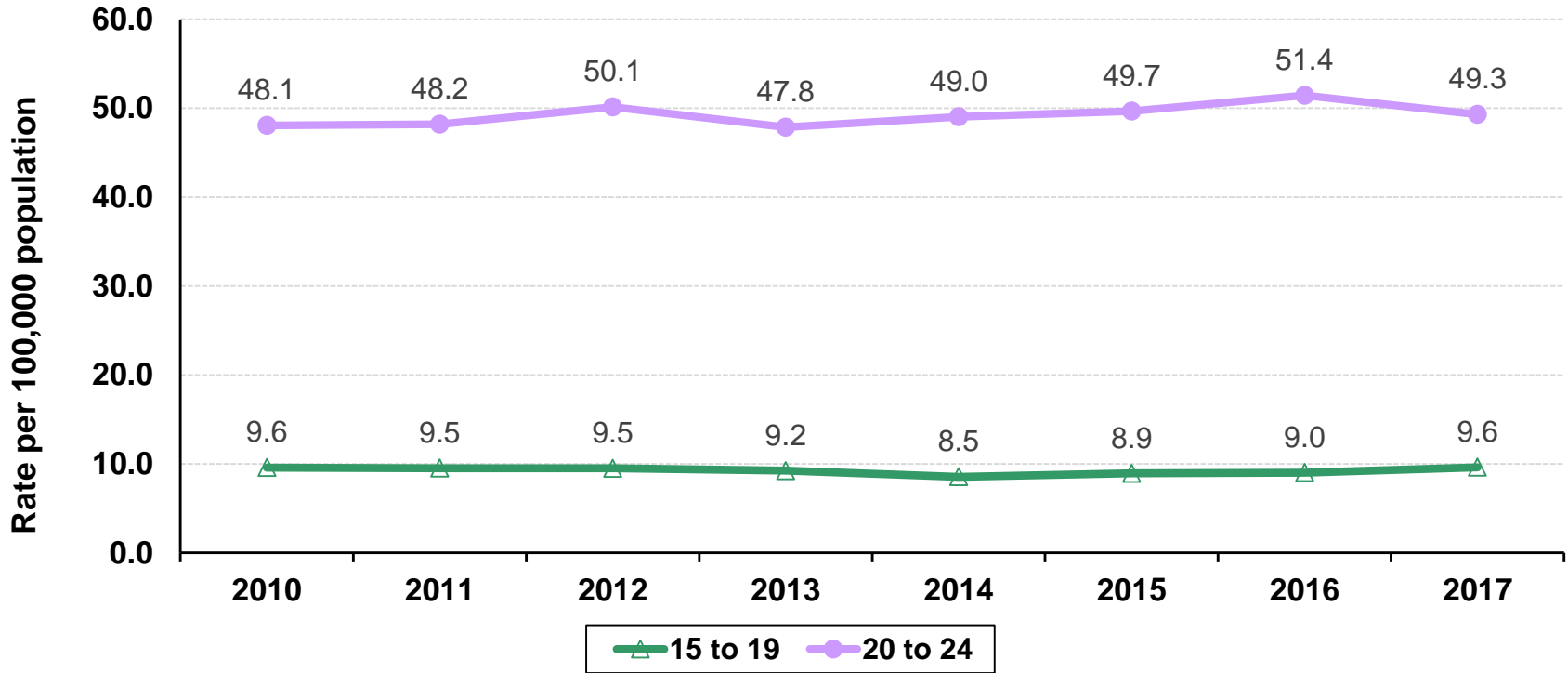
Data Source: California Department of Public Health, Office of AIDS, Surveillance Section

Population: State of California, Department of Finance, Report P-3: State and County Population Projections by Race/Ethnicity, Detailed Age, and Gender, 2010-2060. Accessed: Sacramento, California, May 2018

<http://dof.ca.gov/Forecasting/Demographics/Projections/>

Prepared by: California Department of Public Health, Office of AIDS, Surveillance Section

# Moving 3-year average rates of new HIV diagnoses in adolescents/young adult males who were likely to have been infected through sexual transmission by year of diagnosis and age group, California, 2008-2017



Rates are per 100,000 age- and gender-specific population.

For data de-identification purposes, cases have been averaged over three years then divided by the average population for the same three years to calculate the rate. Each year displayed in the graph is the endpoint of a 3-year period, e.g., 2010 is the average of data from 2008-2010.

Due to rounding, combining case counts for ages 15-17 and 18-19 may not equal case counts for ages 15-19.

Age group is based on age at the date of diagnosis.

Cases attributable to sexual behavior (heterosexual contact, male-to-male sexual contact (MMSC), MMSC and Injection Drug Use (IDU)) are included. Nonsexual risk behavior (IDU, Perinatal, Unknown Risk & Other (blood transfusion, receiving a transplant, occupational exposures)) are excluded.

Includes all cases diagnosed with HIV infection whose last known residence was in California.

Data Source: California Department of Public Health, Office of AIDS, Surveillance Section

2010-2017 Population Data Source: State of California, Department of Finance, Report P-3: State and County Population Projections by Race/Ethnicity, Detailed Age, and Gender, 2010-2060. Sacramento, California, May 2018

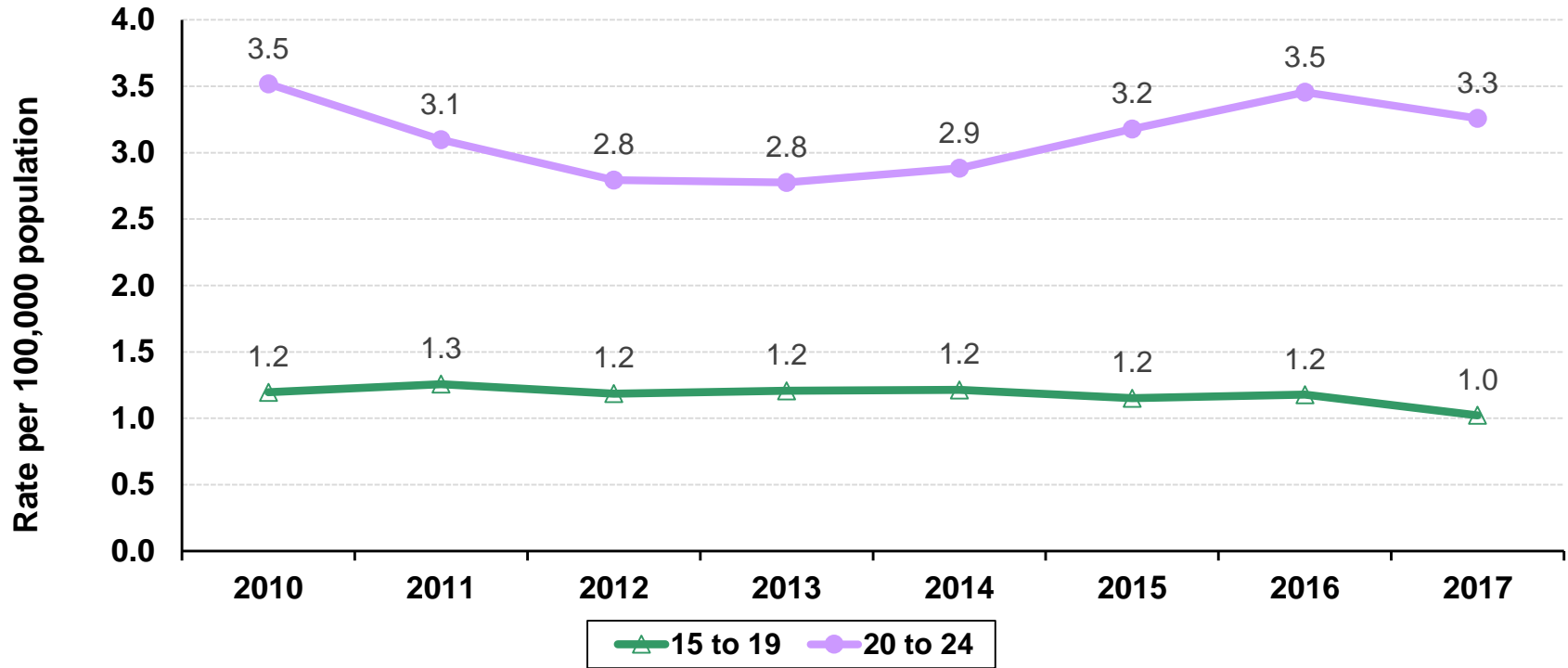
<http://dof.ca.gov/Forecasting/Demographics/Projections/>

2008-2009 Population Data Source: California Department of Finance, Race/Hispanics Population with Age and Gender Detail, 2000-2010. Sacramento, CA, September 2012

<http://dof.ca.gov/Forecasting/Demographics/Estimates/Race-Ethnic/2000-2010/>

Prepared by: California Department of Public Health, Office of AIDS, Surveillance Section

# Moving 3-year average rates of new HIV diagnoses in adolescents/young adult females who were likely to have been infected through sexual transmission by year of diagnosis and age group, California, 2008-2017



Rates are per 100,000 age- and gender-specific population.

For data de-identification purposes, cases have been averaged over three years then divided by the average population for the same three years to calculate the rate. Each year displayed in the graph is the endpoint of a 3-year period, e.g., 2010 is the average of data from 2008-2010.

Due to rounding, combining case counts for ages 15-17 and 18-19 may not equal case counts for ages 15-19.

Age group is based on age at the date of diagnosis.

Cases attributable to sexual behavior (heterosexual contact, MSM, MSM and Injection Drug Use (IDU)) are included. Nonsexual risk behavior (IDU, Perinatal, Unknown Risk & Other (blood transfusion, receiving a transplant, occupational exposures)) are excluded.

Includes all cases diagnosed with HIV infection whose last known residence was in California.

Data Source: California Department of Public Health, Office of AIDS, Surveillance Section

2010-2017 Population Data Source: State of California, Department of Finance, Report P-3: State and County Population Projections by Race/Ethnicity, Detailed Age, and Gender, 2010-2060. Sacramento, California, May 2018

<http://dof.ca.gov/Forecasting/Demographics/Projections/>

2008-2009 Population Data Source: California Department of Finance, Race/Hispanics Population with Age and Gender Detail, 2000-2010. Sacramento, CA, September 2012

<http://dof.ca.gov/Forecasting/Demographics/Estimates/Race-Ethnic/2000-2010/>

Prepared by: California Department of Public Health, Office of AIDS, Surveillance Section

# Chlamydia, Moving 3-year Average Incidence Rates for Adolescent/Young Adult Females by Age Group, California, 2008–2017

Chlamydia, Moving 3-year Average Cases & Rates* for Adolescent/Young Adult Females by Age Group, California, 2008–2017										
Age Group	2008		2009		2010		2011		2012	
	Cases	Rate	Cases	Rate	Cases	Rate	Cases	Rate	Cases	Rate
10-14	1,138	85.4	1,097	84.0	1,024	79.7	963	76.2	903	72.0
15-17	13,767	1,708.4	13,575	1,678.3	13,277	1,645.5	12,917	1,609.8	12,580	1,566.5
18-19	19,516	3,717.4	20,196	3,782.7	20,539	3,758.4	20,633	3,662.9	20,527	3,557.9
[15-19]	33,284	2,500.9	33,771	2,515.0	33,816	2,498.7	33,550	2,456.6	33,107	2,399.1
20-24	36,980	2,827.5	37,788	2,881.6	39,284	2,984.2	41,549	3,141.8	44,514	3,329.0

Age Group	2013		2014		2015		2016		2017	
	Cases	Rate	Cases	Rate	Cases	Rate	Cases	Rate	Cases	Rate
10-14	855	68.5	744	59.7	671	53.8	629	50.4	621	49.5
15-17	11,842	1,474.4	10,736	1,343.5	9,982	1,258.5	9,697	1,231.4	9,939	1,267.3
18-19	19,917	3,404.7	18,841	3,209.5	18,327	3,120.5	18,366	3,134.6	19,453	3,343.8
[15-19]	31,759	2,287.8	29,576	2,133.8	28,309	2,050.7	28,063	2,043.3	29,392	2,151.6
20-24	45,881	3,378.6	46,271	3,338.2	46,954	3,322.1	48,019	3,346.1	50,055	3,453.9

\* Rate per 100,000 age- and gender-specific population. For data de-identification purposes, cases have been averaged over three years then divided by the average population for the same three years to calculate the rate. Each year displayed in the table is the endpoint of a 3-year period, e.g., 2008 is the average of data from 2006-2008. Due to rounding, combining case counts for ages 15-17 and 18-19 may not equal case counts for ages 15-19.

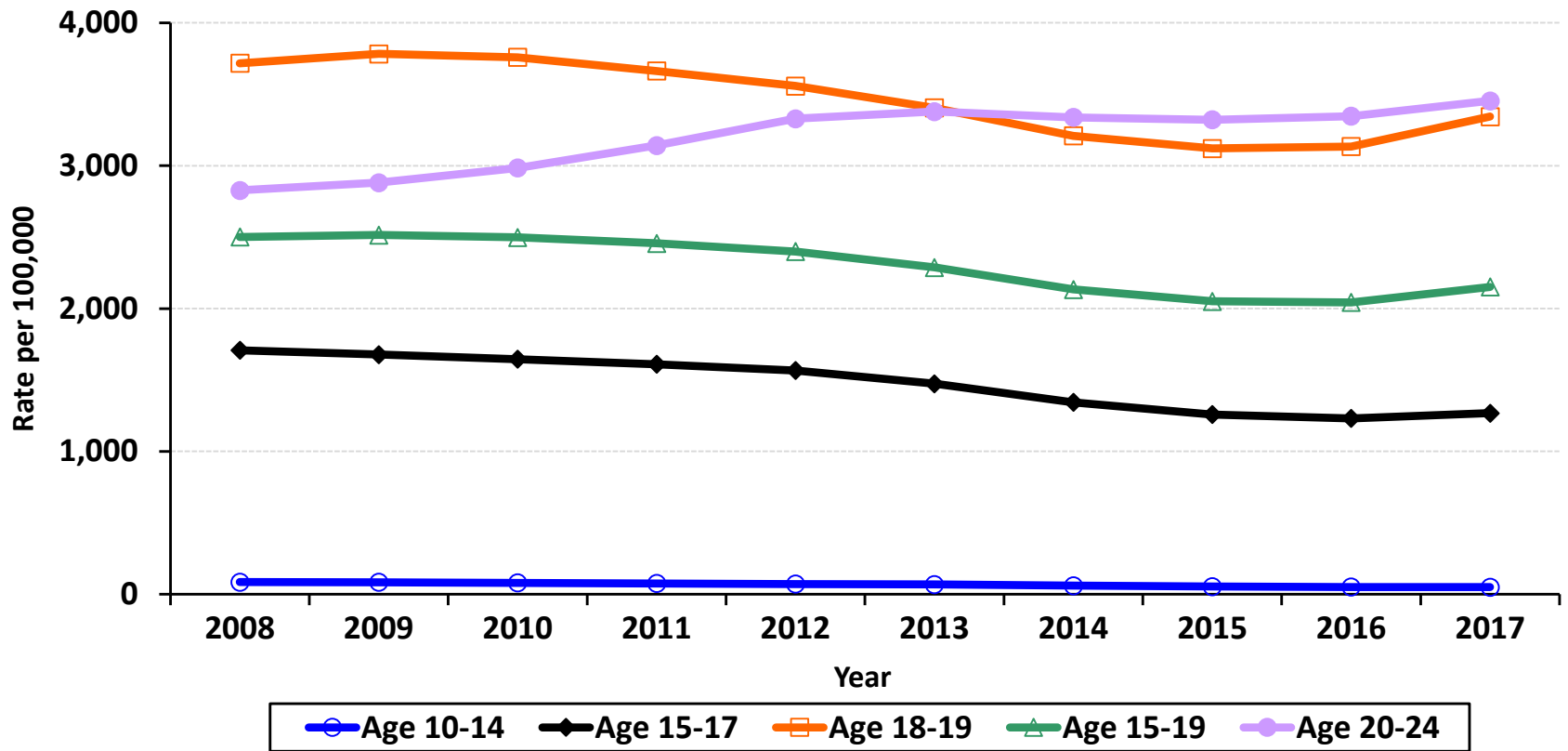
Data Sources: California Department of Public Health, STD Control Branch

Population: State of California, Department of Finance, *Race/Hispanics Population with Age and Gender Detail, 2000-2010*. Sacramento, California, September 2012; and State of California, Department of Finance, *Report P-3: State and County Population Projections by Race/Ethnicity, Detailed Age, and Gender, 2010-2060, Baseline 2016*. Sacramento, California, February 2017

Prepared by: California Department of Public Health, STD Control Branch, November 2019



# Chlamydia, Moving 3-year Average Incidence Rates for Adolescent/Young Adult Females by Age Group, California, 2008–2017



Note: For data de-identification purposes, cases have been averaged over three years then divided by the average population for the same three years to calculate the rate. Each year displayed in the table is the endpoint of a 3-year period, e.g., 2008 is the average of data from 2006-2008.

Data Sources: California Department of Public Health, STD Control Branch

Population: State of California, Department of Finance, *Race/Hispanics Population with Age and Gender Detail, 2000-2010*. Sacramento, California, September 2012; and State of California, Department of Finance, *Report P-3: State and County Population Projections by Race/Ethnicity, Detailed Age, and Gender, 2010-2060, Baseline 2016*. Sacramento, California, February 2017

Prepared by: California Department of Public Health, STD Control Branch, November 2019

# Chlamydia, Moving 3-year Average Incidence Rates for Females Age 15-19 by Race/Ethnicity, California, 2008–2017

**Chlamydia, Moving 3-year Average Cases & Rates\* by Race/Ethnicity,  
For Female California Residents Ages 15-19, 2008–2017**

Race/Ethnicity	2008		2009		2010		2011		2012	
	Cases	Rate	Cases	Rate	Cases	Rate	Cases	Rate	Cases	Rate
White	4,235	952.9	4,265	983.8	4,141	982.5	4,162	1,008.1	4,228	1,029.9
African American/Black	6,635	7,172.4	6,723	7,255.5	6,821	7,451.1	6,592	7,305.2	6,174	6,939.9
American Indian/Alaska Native	135	2,007.5	131	1,968.1	112	1,737.7	110	1,756.1	112	1,842.8
Asian/Pacific Islander	908	592.8	912	600.5	900	589.7	865	563.1	832	529.4
Hispanic/Latino	10,592	1,789.1	10,747	1,749.9	10,547	1,660.2	10,510	1,605.6	10,694	1,603.2

Race/Ethnicity	2013		2014		2015		2016		2017	
	Cases	Rate	Cases	Rate	Cases	Rate	Cases	Rate	Cases	Rate
White	4,242	1,033.6	3,993	978.9	3,795	938.2	3,757	938.9	3,968	1,003.8
African American/Black	5,430	6,163.4	4,705	5,435.6	4,257	5,025.8	3,934	4,743.3	3,930	4,830.7
American Indian/Alaska Native	116	1,921.3	107	1,803.0	103	1,779.1	97	1,720.7	100	1,808.7
Asian/Pacific Islander	782	495.4	741	470.5	722	460.0	734	468.5	808	518.0
Hispanic/Latino	10,810	1,604.5	10,281	1,523.3	9,323	1,383.1	8,474	1,259.2	8,273	1,230.9

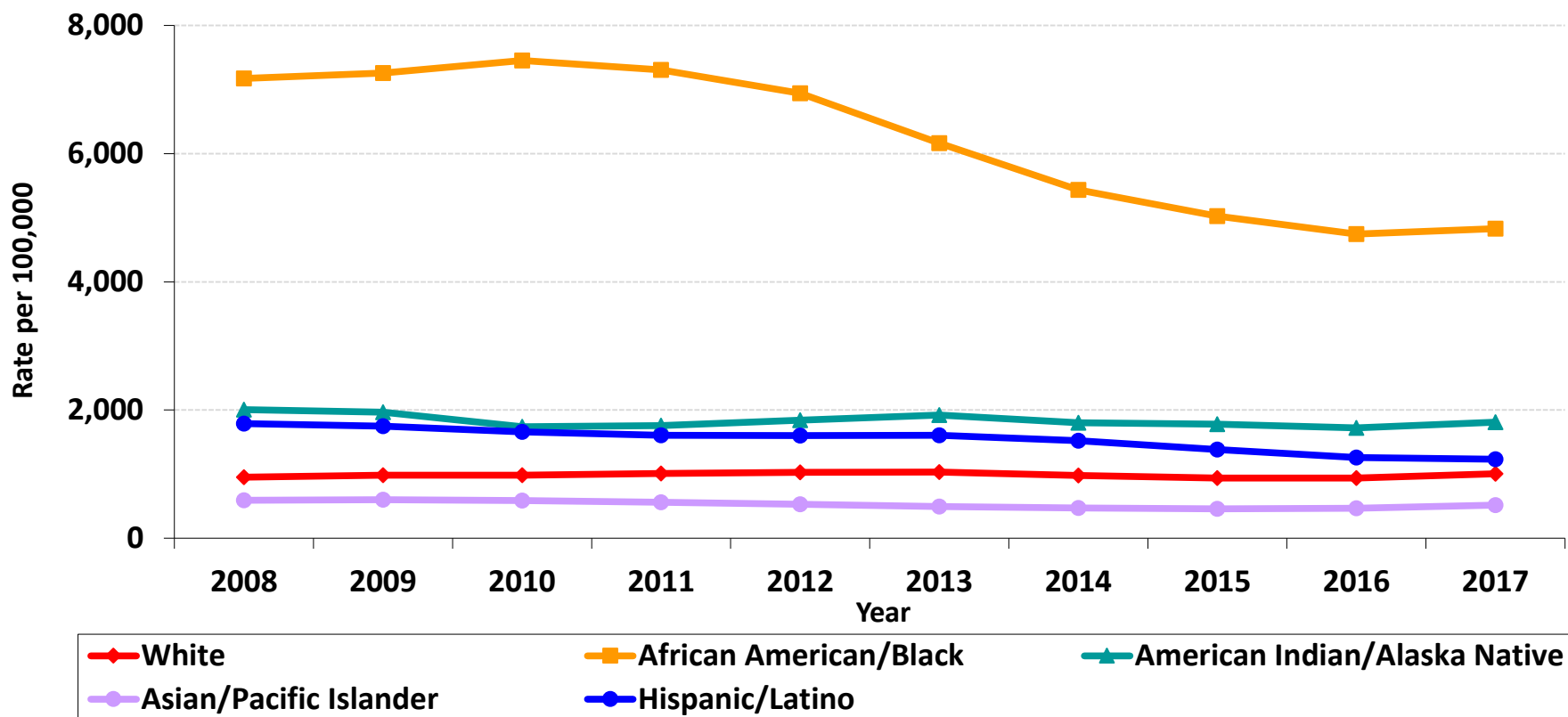
\* Rate per 100,000 race-, age- and gender-specific population. For data de-identification purposes, cases have been averaged over three years then divided by the average population for the same three years to calculate the rate. Each year displayed in the table is the endpoint of a 3-year period, e.g., 2008 is the average of data from 2006-2008.

Data Sources: California Department of Public Health, STD Control Branch

Population: State of California, Department of Finance, *Race/Hispanics Population with Age and Gender Detail, 2000-2010*. Sacramento, California, September 2012; and State of California, Department of Finance, *Report P-3: State and County Population Projections by Race/Ethnicity, Detailed Age, and Gender, 2010-2060, Baseline 2016*. Sacramento, California, February 2017

Prepared by: California Department of Public Health, STD Control Branch, November 2019

## Chlamydia, Moving 3-year Average Incidence Rates for Females Age 15-19 by Race/Ethnicity, California, 2008–2017



Note: For data de-identification purposes, cases have been averaged over three years then divided by the average population for the same three years to calculate the rate. Each year displayed in the table is the endpoint of a 3-year period, e.g., 2008 is the average of data from 2006-2008.

Data Sources: California Department of Public Health, STD Control Branch

Population: State of California, Department of Finance, *Race/Hispanics Population with Age and Gender Detail, 2000-2010*. Sacramento, California, September 2012; and State of California, Department of Finance, *Report P-3: State and County Population Projections by Race/Ethnicity, Detailed Age, and Gender, 2010-2060, Baseline 2016*. Sacramento, California, February 2017

Prepared by: California Department of Public Health, STD Control Branch, November 2019

# Chlamydia, Moving 3-year Average Incidence Rates for Adolescent/Young Adult Males by Age Group, California, 2008–2017

Chlamydia, Moving 3-year Average Cases & Rates* for Adolescent/Young Adult Males by Age Group, California, 2008–2017										
Age Group	2008		2009		2010		2011		2012	
	Cases	Rate	Cases	Rate	Cases	Rate	Cases	Rate	Cases	Rate
10-14	157	11.2	160	11.7	170	12.7	160	12.1	150	11.4
15-17	3,362	390.2	3,390	393.1	3,352	390.9	3,243	382.0	3,105	366.6
18-19	4,682	823.0	5,051	874.5	5,317	904.2	5,392	895.1	5,354	872.8
[15-19]	8,044	562.3	8,441	586.2	8,669	599.7	8,635	595.0	8,459	579.2
20-24	13,704	972.4	14,522	1,021.2	15,523	1,083.5	16,443	1,140.1	17,492	1,200.5

Age Group	2013		2014		2015		2016		2017	
	Cases	Rate	Cases	Rate	Cases	Rate	Cases	Rate	Cases	Rate
10-14	130	9.9	113	8.7	102	7.8	96	7.4	95	7.2
15-17	2,924	346.2	2,696	321.5	2,586	310.6	2,563	309.7	2,655	321.8
18-19	5,107	824.7	4,902	791.4	4,905	794.1	5,074	825.6	5,522	906.4
[15-19]	8,030	548.6	7,597	521.1	7,491	516.5	7,638	529.5	8,177	570.1
20-24	18,004	1,216.2	18,410	1,218.1	19,167	1,244.0	20,385	1,304.1	21,990	1,396.5

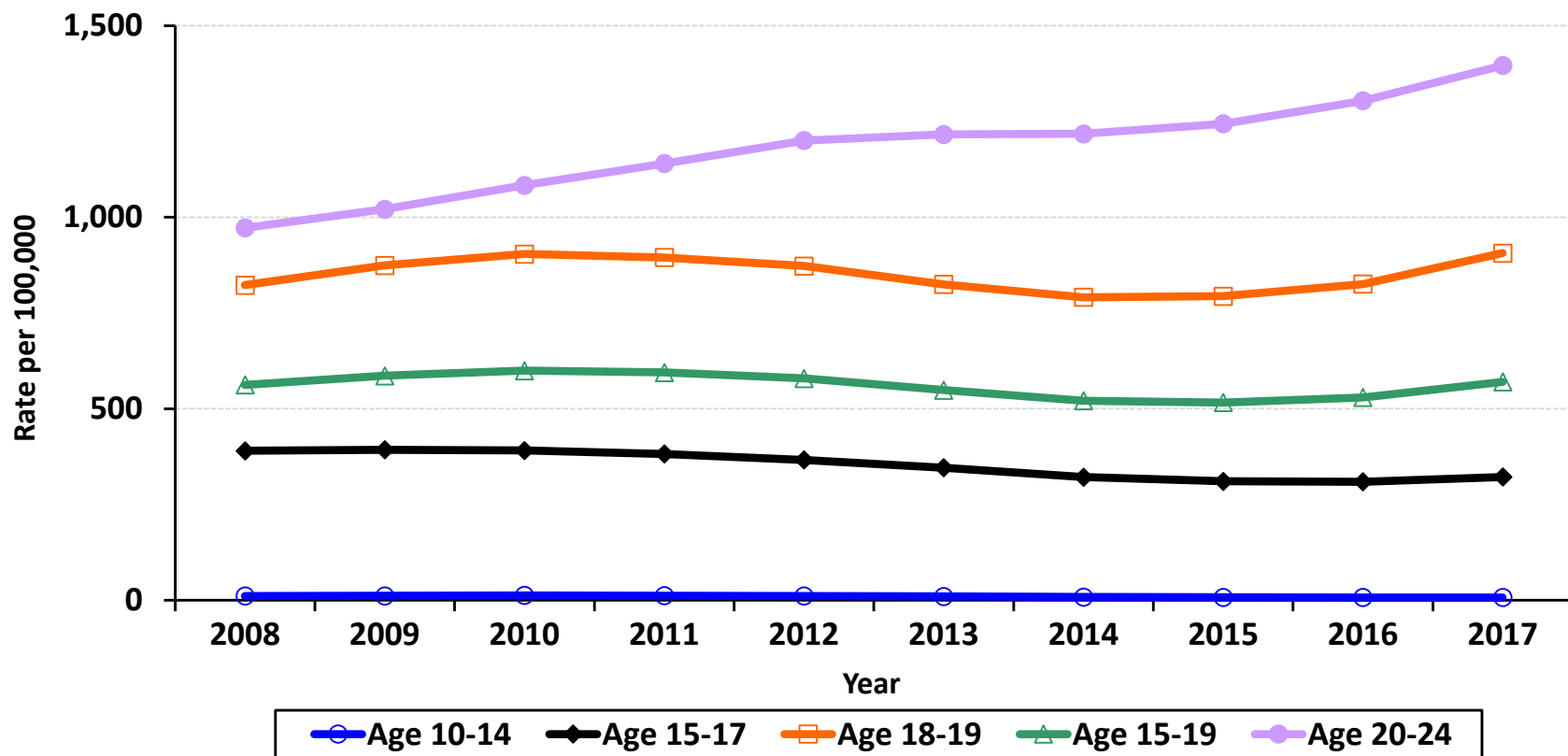
\* Rate per 100,000 age- and gender-specific population. For data de-identification purposes, cases have been averaged over three years then divided by the average population for the same three years to calculate the rate. Each year displayed in the table is the endpoint of a 3-year period, e.g., 2008 is the average of data from 2006-2008. Due to rounding, combining case counts for ages 15-17 and 18-19 may not equal case counts for ages 15-19.

Data Sources: California Department of Public Health, STD Control Branch

Population: State of California, Department of Finance, *Race/Hispanics Population with Age and Gender Detail, 2000-2010*. Sacramento, California, September 2012; and State of California, Department of Finance, *Report P-3: State and County Population Projections by Race/Ethnicity, Detailed Age, and Gender, 2010-2060, Baseline 2016*. Sacramento, California, February 2017

Prepared by: California Department of Public Health, STD Control Branch, November 2019

# Chlamydia, Moving 3-year Average Incidence Rates for Adolescent/Young Adult Males by Age Group, California, 2008–2017



Note: For data de-identification purposes, cases have been averaged over three years then divided by the average population for the same three years to calculate the rate. Each year displayed in the table is the endpoint of a 3-year period, e.g., 2008 is the average of data from 2006-2008.

Data Sources: California Department of Public Health, STD Control Branch

Population: State of California, Department of Finance, *Race/Hispanics Population with Age and Gender Detail, 2000-2010*. Sacramento, California, September 2012; and State of California, Department of Finance, *Report P-3: State and County Population Projections by Race/Ethnicity, Detailed Age, and Gender, 2010-2060, Baseline 2016*. Sacramento, California, February 2017

Prepared by: California Department of Public Health, STD Control Branch, November 2019

# Chlamydia, Moving 3-year Average Incidence Rates for Males Age 15-19 by Race/Ethnicity, California, 2008–2017

**Chlamydia, Moving 3-year Average Cases & Rates\* by Race/Ethnicity,  
For Male California Residents Ages 15-19, 2008–2017**

Race/Ethnicity	2008		2009		2010		2011		2012	
	Cases	Rate	Cases	Rate	Cases	Rate	Cases	Rate	Cases	Rate
White	693	155.9	710	163.9	713	169.2	742	179.7	761	185.3
African American/Black	2,260	2,443.4	2,353	2,539.4	2,441	2,666.6	2,343	2,596.5	2,155	2,422.1
American Indian/Alaska Native	19	278.3	20	296.2	22	342.4	26	411.0	25	416.8
Asian/Pacific Islander	145	94.4	146	96.3	134	88.0	126	82.1	130	82.5
Hispanic/Latino	2,434	411.1	2,563	417.4	2,584	406.8	2,567	392.1	2,580	386.8

Race/Ethnicity	2013		2014		2015		2016		2017	
	Cases	Rate	Cases	Rate	Cases	Rate	Cases	Rate	Cases	Rate
White	759	184.8	730	179.0	760	187.9	783	195.7	885	223.8
African American/Black	1,841	2,089.5	1,632	1,885.9	1,538	1,815.9	1,512	1,823.4	1,557	1,913.4
American Indian/Alaska Native	25	419.6	23	383.1	26	444.8	26	467.1	25	456.7
Asian/Pacific Islander	124	78.6	123	78.3	119	75.6	120	76.6	134	86.2
Hispanic/Latino	2,584	383.5	2,511	372.1	2,327	345.2	2,176	323.4	2,133	317.3

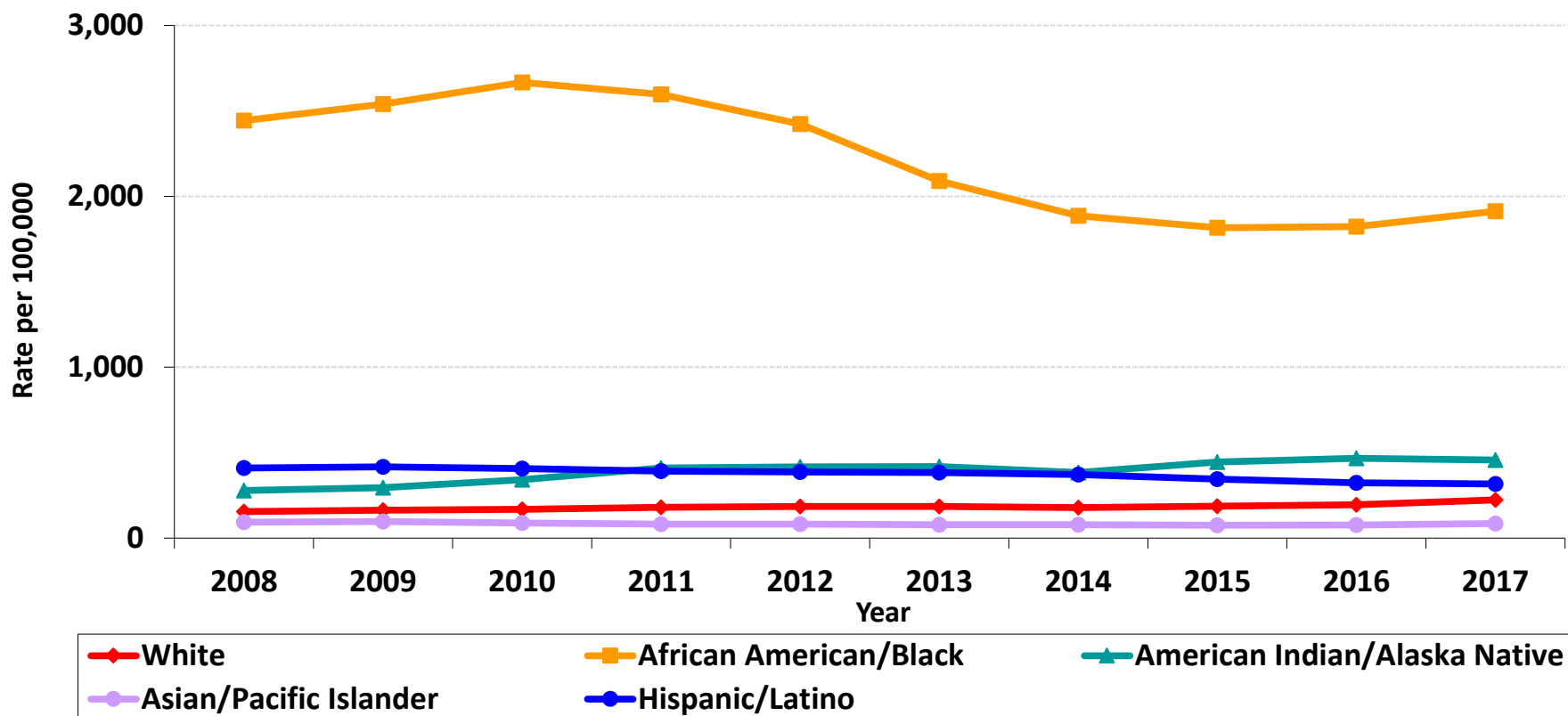
\* Rate per 100,000 race-, age- and gender-specific population. For data de-identification purposes, cases have been averaged over three years then divided by the average population for the same three years to calculate the rate. Each year displayed in the table is the endpoint of a 3-year period, e.g., 2008 is the average of data from 2006-2008.

Data Sources: California Department of Public Health, STD Control Branch

Population: State of California, Department of Finance, *Race/Hispanics Population with Age and Gender Detail, 2000-2010*. Sacramento, California, September 2012; and State of California, Department of Finance, *Report P-3: State and County Population Projections by Race/Ethnicity, Detailed Age, and Gender, 2010-2060, Baseline 2016*. Sacramento, California, February 2017

Prepared by: California Department of Public Health, STD Control Branch, November 2019

## Chlamydia, Moving 3-year Average Incidence Rates for Males Age 15-19 by Race/Ethnicity, California, 2008–2017



Note: For data de-identification purposes, cases have been averaged over three years then divided by the average population for the same three years to calculate the rate. Each year displayed in the table is the endpoint of a 3-year period, e.g., 2008 is the average of data from 2006-2008.

Data Sources: California Department of Public Health, STD Control Branch

Population: State of California, Department of Finance, *Race/Hispanics Population with Age and Gender Detail, 2000-2010*. Sacramento, California, September 2012; and State of California, Department of Finance, *Report P-3: State and County Population Projections by Race/Ethnicity, Detailed Age, and Gender, 2010-2060, Baseline 2016*. Sacramento, California, February 2017

Prepared by: California Department of Public Health, STD Control Branch, November 2019

# Gonorrhea, Moving 3-year Average Incidence Rates for Adolescent/Young Adult Females by Age Group, California, 2008–2017

Gonorrhea, Moving 3-year Average Cases & Rates* for Adolescent/Young Adult Females by Age Group, California, 2008–2017										
Age Group	2008		2009		2010		2011		2012	
	Cases	Rate	Cases	Rate	Cases	Rate	Cases	Rate	Cases	Rate
10-14	223	16.7	176	13.5	155	12.0	129	10.2	128	10.2
15-17	2,025	251.2	1,698	209.9	1,445	179.0	1,342	167.2	1,357	169.0
18-19	2,552	486.0	2,258	422.8	2,008	367.4	1,877	333.2	1,845	319.7
[15-19]	4,576	343.9	3,956	294.6	3,453	255.1	3,219	235.7	3,202	232.0
20-24	4,383	335.1	3,835	292.5	3,531	268.2	3,558	269.0	3,992	298.5

Age Group	2013		2014		2015		2016		2017	
	Cases	Rate	Cases	Rate	Cases	Rate	Cases	Rate	Cases	Rate
10-14	116	9.3	111	8.9	116	9.3	124	9.9	124	9.9
15-17	1,311	163.3	1,290	161.4	1,332	167.9	1,375	174.6	1,484	189.2
18-19	1,826	312.2	1,895	322.8	2,022	344.3	2,131	363.8	2,345	403.1
[15-19]	3,137	226.0	3,184	229.7	3,354	243.0	3,506	255.3	3,829	280.3
20-24	4,336	319.3	4,817	347.5	5,202	368.0	5,772	402.2	6,420	443.0

\* Rate per 100,000 age- and gender-specific population. For data de-identification purposes, cases have been averaged over three years then divided by the average population for the same three years to calculate the rate. Each year displayed in the table is the endpoint of a 3-year period, e.g., 2008 is the average of data from 2006-2008. Due to rounding, combining case counts for ages 15-17 and 18-19 may not equal case counts for ages 15-19.

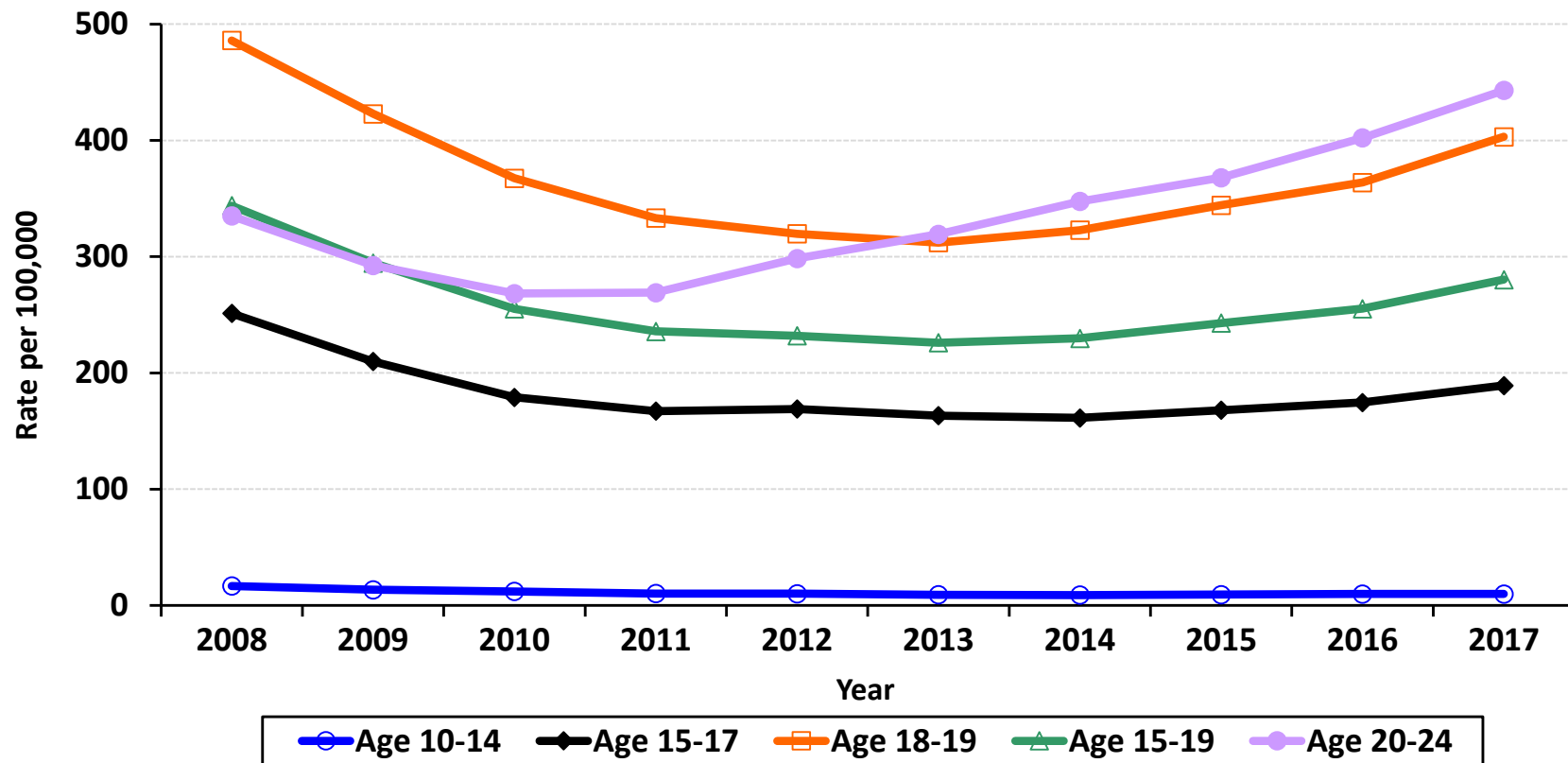
Data Sources: California Department of Public Health, STD Control Branch

Population: State of California, Department of Finance, *Race/Hispanics Population with Age and Gender Detail, 2000-2010*. Sacramento, California, September 2012; and State of California, Department of Finance, *Report P-3: State and County Population Projections by Race/Ethnicity, Detailed Age, and Gender, 2010-2060, Baseline 2016*. Sacramento, California, February 2017

Prepared by: California Department of Public Health, STD Control Branch, November 2019



# Gonorrhea, Moving 3-year Average Incidence Rates for Adolescent/Young Adult Females by Age Group, California, 2008–2017



Note: For data de-identification purposes, cases have been averaged over three years then divided by the average population for the same three years to calculate the rate. Each year displayed in the table is the endpoint of a 3-year period, e.g., 2008 is the average of data from 2006-2008.

Data Sources: California Department of Public Health, STD Control Branch

Population: State of California, Department of Finance, *Race/Hispanics Population with Age and Gender Detail, 2000-2010*. Sacramento, California, September 2012; and State of California, Department of Finance, *Report P-3: State and County Population Projections by Race/Ethnicity, Detailed Age, and Gender, 2010-2060, Baseline 2016*. Sacramento, California, February 2017

Prepared by: California Department of Public Health, STD Control Branch, November 2019

# Gonorrhea, Moving 3-year Average Incidence Rates for Females Age 15-19 by Race/Ethnicity, California, 2008–2017

**Gonorrhea, Moving 3-year Average Cases & Rates\* by Race/Ethnicity,  
For Female California Residents Ages 15-19, 2008–2017**

Race/Ethnicity	2008		2009		2010		2011		2012	
	Cases	Rate	Cases	Rate	Cases	Rate	Cases	Rate	Cases	Rate
White	432	97.1	353	81.4	297	70.5	286	69.2	316	76.9
African American/Black	1,743	1,883.8	1,600	1,726.7	1,470	1,605.9	1,381	1,530.0	1,318	1,482.0
American Indian/Alaska Native	20	293.2	14	205.8	8	124.5	9	149.5	10	170.0
Asian/Pacific Islander	90	58.5	74	48.9	59	38.9	57	37.3	50	31.6
Hispanic/Latino	828	139.9	656	106.8	535	84.2	518	79.1	592	88.7

Race/Ethnicity	2013		2014		2015		2016		2017	
	Cases	Rate	Cases	Rate	Cases	Rate	Cases	Rate	Cases	Rate
White	340	82.8	384	94.2	436	107.8	504	126.0	565	143.0
African American/Black	1,222	1,387.0	1,139	1,316.0	1,146	1,353.1	1,110	1,338.7	1,152	1,416.0
American Indian/Alaska Native	11	176.7	12	202.8	11	184.8	12	207.0	14	258.4
Asian/Pacific Islander	45	28.7	40	25.4	48	30.8	58	37.0	78	50.0
Hispanic/Latino	697	103.5	789	116.9	883	130.9	978	145.3	1,083	161.1

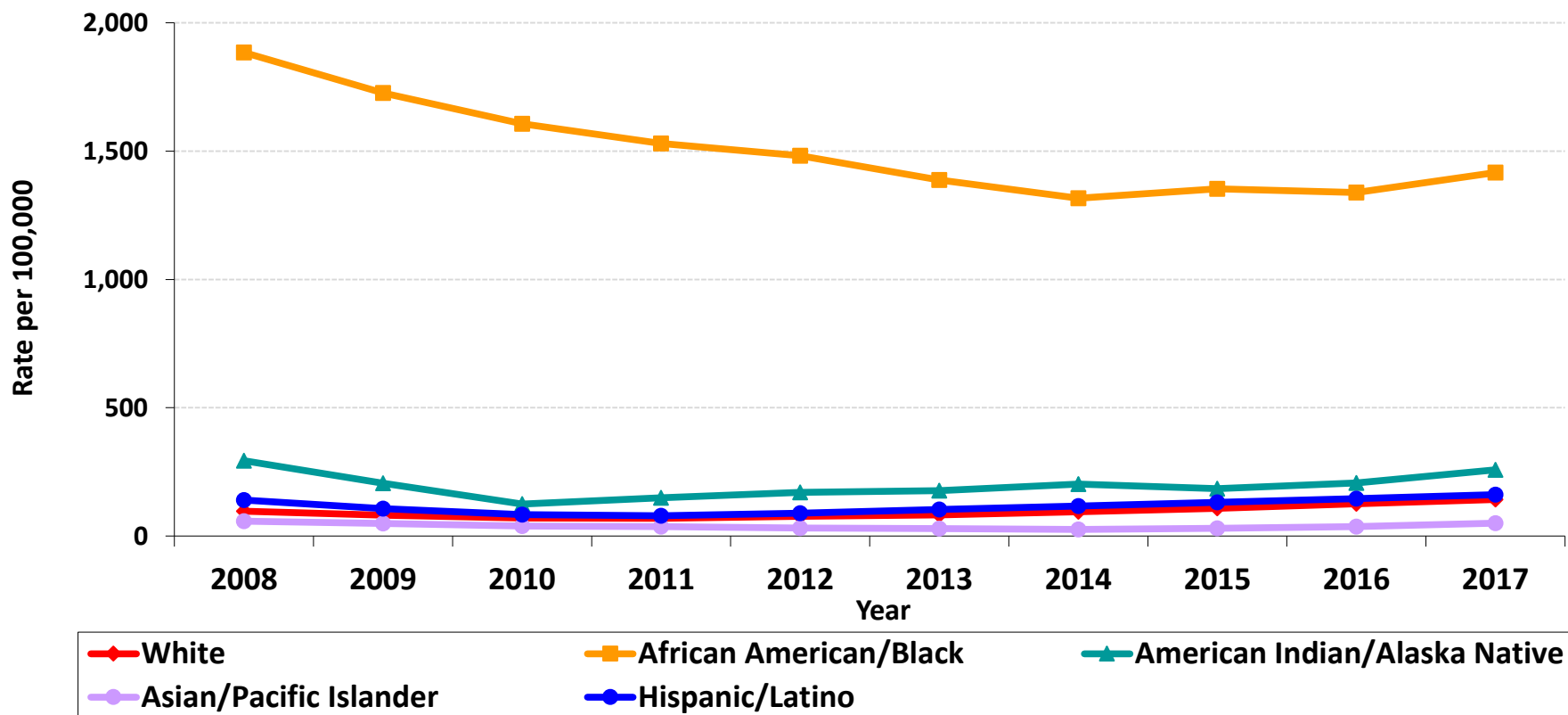
\* Rate per 100,000 race-, age- and gender-specific population. For data de-identification purposes, cases have been averaged over three years then divided by the average population for the same three years to calculate the rate. Each year displayed in the table is the endpoint of a 3-year period, e.g., 2008 is the average of data from 2006-2008.

Data Sources: California Department of Public Health, STD Control Branch

Population: State of California, Department of Finance, *Race/Hispanics Population with Age and Gender Detail, 2000-2010*. Sacramento, California, September 2012; and State of California, Department of Finance, *Report P-3: State and County Population Projections by Race/Ethnicity, Detailed Age, and Gender, 2010-2060, Baseline 2016*. Sacramento, California, February 2017

Prepared by: California Department of Public Health, STD Control Branch, November 2019

## Gonorrhea, Moving 3-year Average Incidence Rates for Females Age 15-19 by Race/Ethnicity, California, 2008–2017



Note: For data de-identification purposes, cases have been averaged over three years then divided by the average population for the same three years to calculate the rate. Each year displayed in the table is the endpoint of a 3-year period, e.g., 2008 is the average of data from 2006-2008.

Data Sources: California Department of Public Health, STD Control Branch

Population: State of California, Department of Finance, *Race/Hispanics Population with Age and Gender Detail, 2000-2010*. Sacramento, California, September 2012; and State of California, Department of Finance, *Report P-3: State and County Population Projections by Race/Ethnicity, Detailed Age, and Gender, 2010-2060, Baseline 2016*. Sacramento, California, February 2017

Prepared by: California Department of Public Health, STD Control Branch, November 2019

# Gonorrhea, Moving 3-year Average Incidence Rates for Adolescent/Young Adult Males by Age Group, California, 2008–2017

Gonorrhea, Moving 3-year Average Cases & Rates* for Adolescent/Young Adult Males by Age Group, California, 2008–2017										
Age Group	2008		2009		2010		2011		2012	
	Cases	Rate	Cases	Rate	Cases	Rate	Cases	Rate	Cases	Rate
10-14	49	3.5	40	2.9	34	2.5	30	2.3	32	2.4
15-17	761	88.3	676	78.3	590	68.8	555	65.4	563	66.5
18-19	1,399	246.0	1,329	230.1	1,283	218.2	1,224	203.2	1,238	201.8
[15-19]	2,160	151.0	2,005	139.2	1,873	129.6	1,779	122.6	1,801	123.3
20-24	4,057	287.9	3,809	267.9	3,728	260.2	3,939	273.1	4,445	305.1

Age Group	2013		2014		2015		2016		2017	
	Cases	Rate	Cases	Rate	Cases	Rate	Cases	Rate	Cases	Rate
10-14	30	2.3	33	2.5	31	2.4	33	2.5	34	2.6
15-17	565	66.9	610	72.7	650	78.1	716	86.5	754	91.4
18-19	1,256	202.8	1,437	232.0	1,618	262.0	1,829	297.5	2,003	328.8
[15-19]	1,821	124.4	2,047	140.4	2,269	156.4	2,545	176.4	2,757	192.2
20-24	4,989	337.0	5,878	388.9	6,853	444.8	7,997	511.6	9,058	575.2

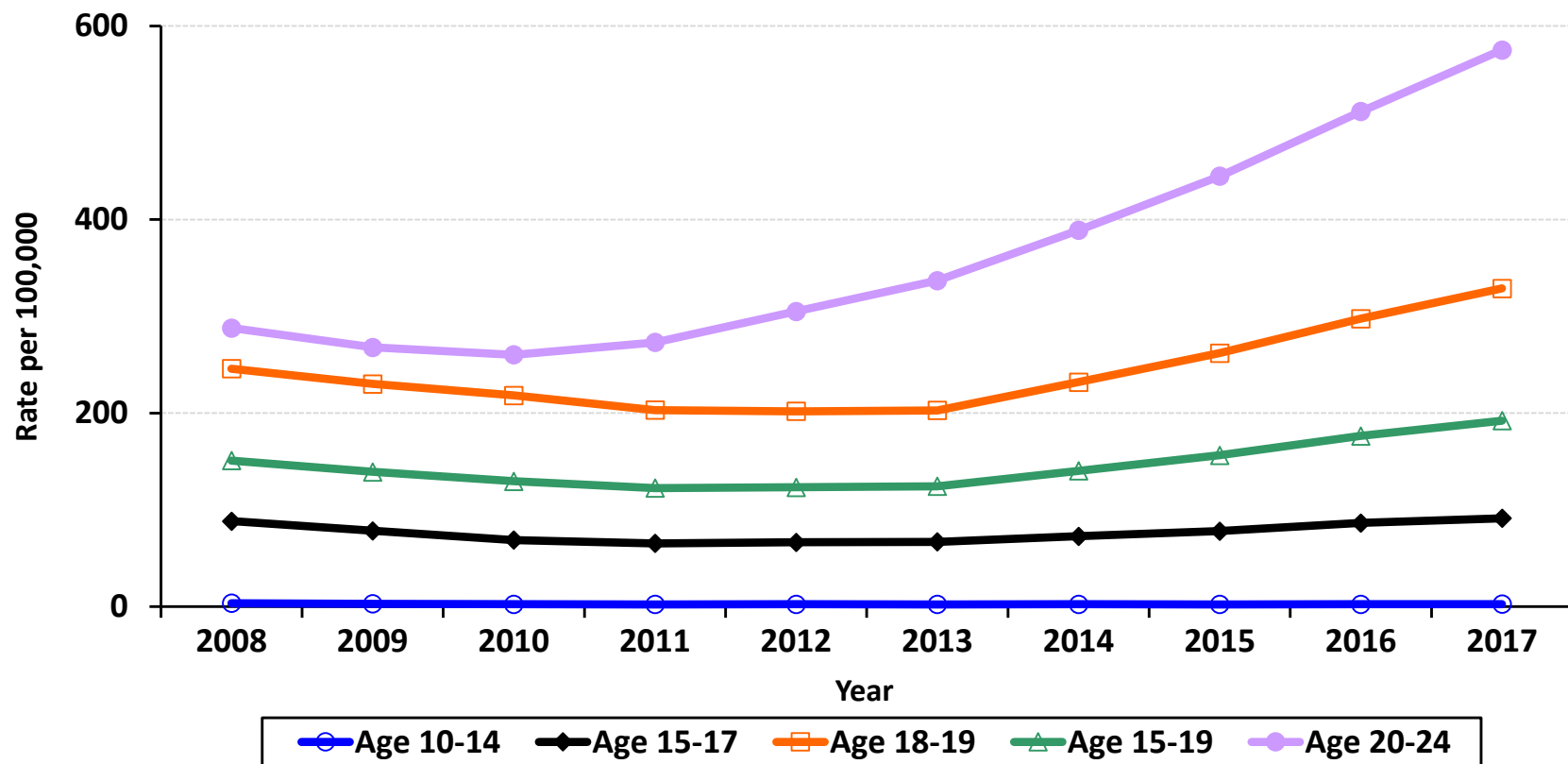
\* Rate per 100,000 age- and gender-specific population. For data de-identification purposes, cases have been averaged over three years then divided by the average population for the same three years to calculate the rate. Each year displayed in the table is the endpoint of a 3-year period, e.g., 2008 is the average of data from 2006-2008. Due to rounding, combining case counts for ages 15-17 and 18-19 may not equal case counts for ages 15-19.

Data Sources: California Department of Public Health, STD Control Branch

Population: State of California, Department of Finance, *Race/Hispanics Population with Age and Gender Detail, 2000-2010*. Sacramento, California, September 2012; and State of California, Department of Finance, *Report P-3: State and County Population Projections by Race/Ethnicity, Detailed Age, and Gender, 2010-2060, Baseline 2016*. Sacramento, California, February 2017

Prepared by: California Department of Public Health, STD Control Branch, November 2019

# Gonorrhea, Moving 3-year Average Incidence Rates for Adolescent/Young Adult Males by Age Group, California, 2008–2017



Note: For data de-identification purposes, cases have been averaged over three years then divided by the average population for the same three years to calculate the rate. Each year displayed in the table is the endpoint of a 3-year period, e.g., 2008 is the average of data from 2006-2008.

Data Sources: California Department of Public Health, STD Control Branch

Population: State of California, Department of Finance, *Race/Hispanics Population with Age and Gender Detail, 2000-2010*. Sacramento, California, September 2012; and State of California, Department of Finance, *Report P-3: State and County Population Projections by Race/Ethnicity, Detailed Age, and Gender, 2010-2060, Baseline 2016*. Sacramento, California, February 2017

Prepared by: California Department of Public Health, STD Control Branch, November 2019

# Gonorrhea, Moving 3-year Average Incidence Rates for Males Age 15-19 by Race/Ethnicity, California, 2008–2017

**Gonorrhea, Moving 3-year Average Cases & Rates\* by Race/Ethnicity,  
For Male California Residents Ages 15-19, 2008–2017**

Race/Ethnicity	2008		2009		2010		2011		2012	
	Cases	Rate	Cases	Rate	Cases	Rate	Cases	Rate	Cases	Rate
White	146	32.9	139	32.0	128	30.4	135	32.8	159	38.6
African American/Black	882	953.4	845	911.9	810	884.9	741	821.2	688	773.0
American Indian/Alaska Native	s	s	s	s	s	s	s	s	s	s
Asian/Pacific Islander	27	17.8	24	15.8	26	17.3	28	18.2	34	21.6
Hispanic/Latino	407	68.7	355	57.7	314	49.4	336	51.3	407	61.0

Race/Ethnicity	2013		2014		2015		2016		2017	
	Cases	Rate	Cases	Rate	Cases	Rate	Cases	Rate	Cases	Rate
White	179	43.5	210	51.5	250	61.8	308	77.1	358	90.5
African American/Black	623	706.7	663	766.0	696	821.4	731	881.0	741	911.2
American Indian/Alaska Native	s	s	s	s	s	s	s	s	s	s
Asian/Pacific Islander	34	21.3	39	24.8	46	29.3	54	34.3	66	42.3
Hispanic/Latino	485	71.9	580	86.0	644	95.5	750	111.5	808	120.3

\* Rate per 100,000 race-, age- and gender-specific population. For data de-identification purposes, cases have been averaged over three years then divided by the average population for the same three years to calculate the rate. Each year displayed in the table is the endpoint of a 3-year period, e.g., 2008 is the average of data from 2006-2008.

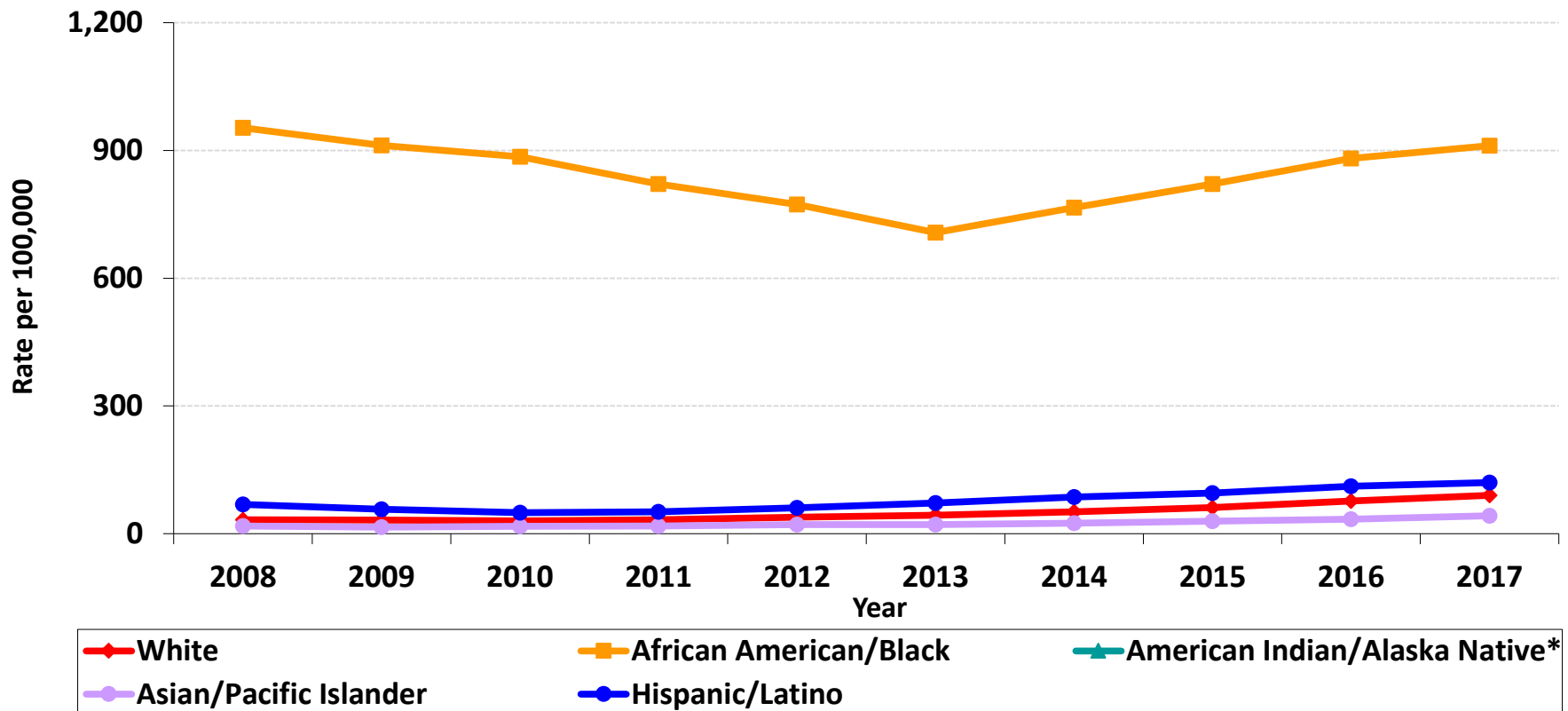
s = Data suppressed as per agency Data De-Identification Guidelines (DDG).

Data Sources: California Department of Public Health, STD Control Branch

Population: State of California, Department of Finance, *Race/Hispanics Population with Age and Gender Detail, 2000-2010*. Sacramento, California, September 2012; and State of California, Department of Finance, *Report P-3: State and County Population Projections by Race/Ethnicity, Detailed Age, and Gender, 2010-2060, Baseline 2016*. Sacramento, California, February 2017

Prepared by: California Department of Public Health, STD Control Branch, November 2019

# Gonorrhea, Moving 3-year Average Incidence Rates for Males Age 15-19 by Race/Ethnicity, California, 2008–2017



\* American Indian/Alaska Native data have been suppressed as per agency data de-identification guidelines.

Note: For data de-identification purposes, cases have been averaged over three years then divided by the average population for the same three years to calculate the rate. Each year displayed in the table is the endpoint of a 3-year period, e.g., 2008 is the average of data from 2006-2008.

Data Sources: California Department of Public Health, STD Control Branch

Population: State of California, Department of Finance, *Race/Hispanics Population with Age and Gender Detail, 2000-2010*. Sacramento, California, September 2012; and State of California, Department of Finance, *Report P-3: State and County Population Projections by Race/Ethnicity, Detailed Age, and Gender, 2010-2060, Baseline 2016*. Sacramento, California, February 2017

Prepared by: California Department of Public Health, STD Control Branch, November 2019

# Chlamydia Prevalence Monitoring for Adolescent/Young Adult Females in Family Planning Clinics, by Age Group, California, 2008–2017

<b>Chlamydia Prevalence Monitoring – Family Planning Title X Clinics, Percent Positive for Adolescent/Young Adult Females by Age Group, California, 2008–2017</b>										
<b>Age Group</b>	<b>2008</b>	<b>2009</b>	<b>2010</b>	<b>2011</b>	<b>2012</b>	<b>2013</b>	<b>2014</b>	<b>2015</b>	<b>2016</b>	<b>2017</b>
10-14	7.8	6.3	4.2	4.7	4.7	5.1	4.6	6.0	7.1	4.8
15-17	6.2	7.4	5.2	5.4	5.6	4.3	4.9	7.3	7.3	8.2
18-19	7.7	8.7	5.9	6.3	6.0	5.9	6.2	8.6	9.0	9.6
[15-19]	7.1	8.2	5.6	6.0	5.9	5.3	5.7	8.1	8.4	9.1
20-24	5.0	6.1	4.5	4.8	4.6	4.5	4.9	6.6	7.0	7.5

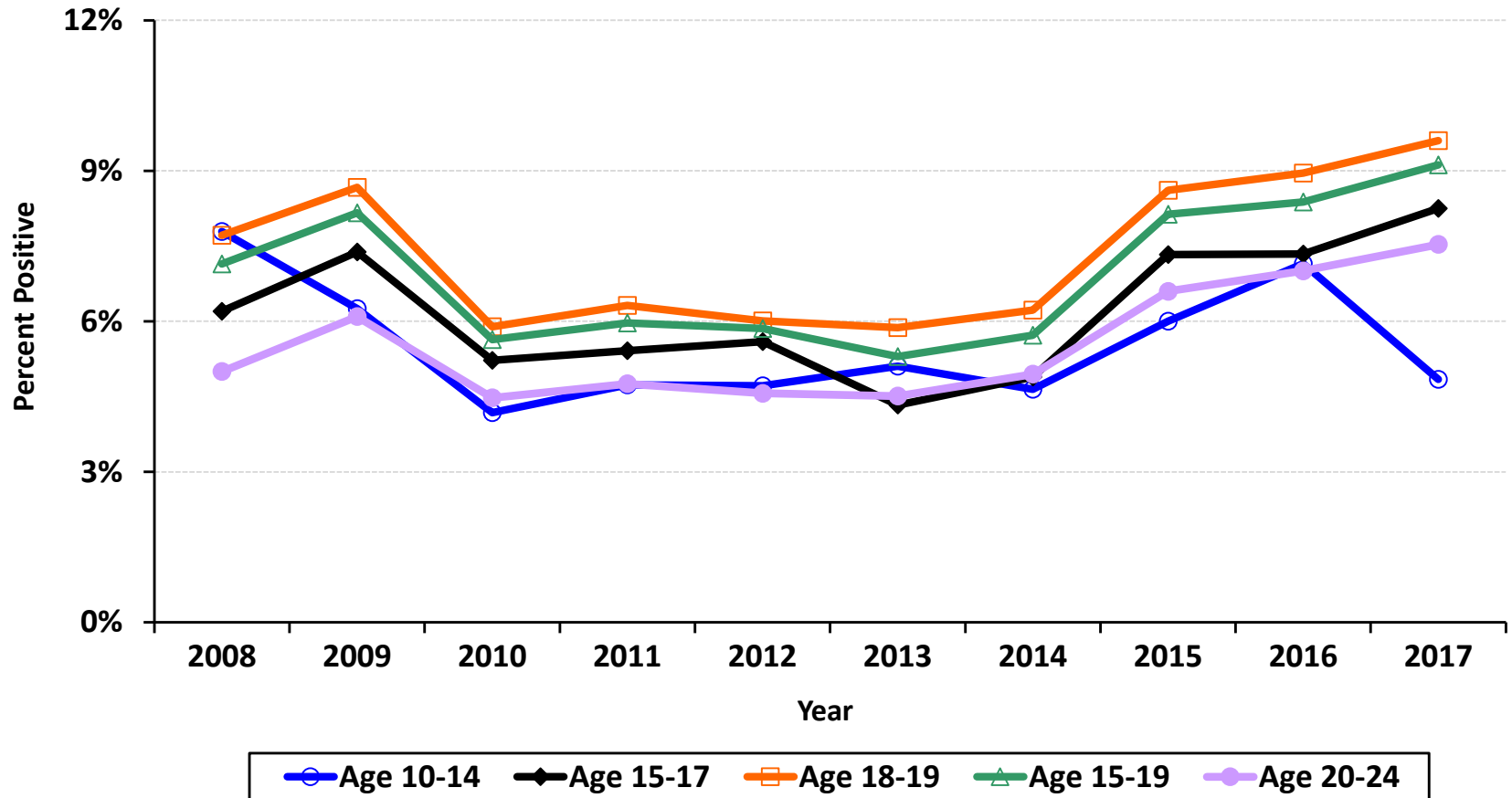
<b>Chlamydia Prevalence Monitoring – Family Planning Quest Clinics, Percent Positive for Adolescent/Young Adult Females by Age Group, California, 2008–2017</b>										
<b>Age Group</b>	<b>2008</b>	<b>2009</b>	<b>2010</b>	<b>2011</b>	<b>2012</b>	<b>2013</b>	<b>2014</b>	<b>2015</b>	<b>2016</b>	<b>2017</b>
10-14	6.1	5.4	4.2	5.5	5.0	4.6	3.8	4.9	2.5	4.6
15-17	6.4	6.3	6.1	5.8	6.1	5.8	6.2	5.9	6.0	7.0
18-19	6.1	6.1	6.2	6.2	7.1	7.0	7.3	8.2	8.4	9.3
[15-19]	6.2	6.2	6.1	6.0	6.7	6.5	6.9	7.2	7.3	8.2
20-24	4.1	3.9	4.2	4.5	4.8	5.0	5.7	6.4	6.9	7.5

Data Source: California Department of Public Health, STD Control Branch

Prepared by: California Department of Public Health, STD Control Branch, November 2019



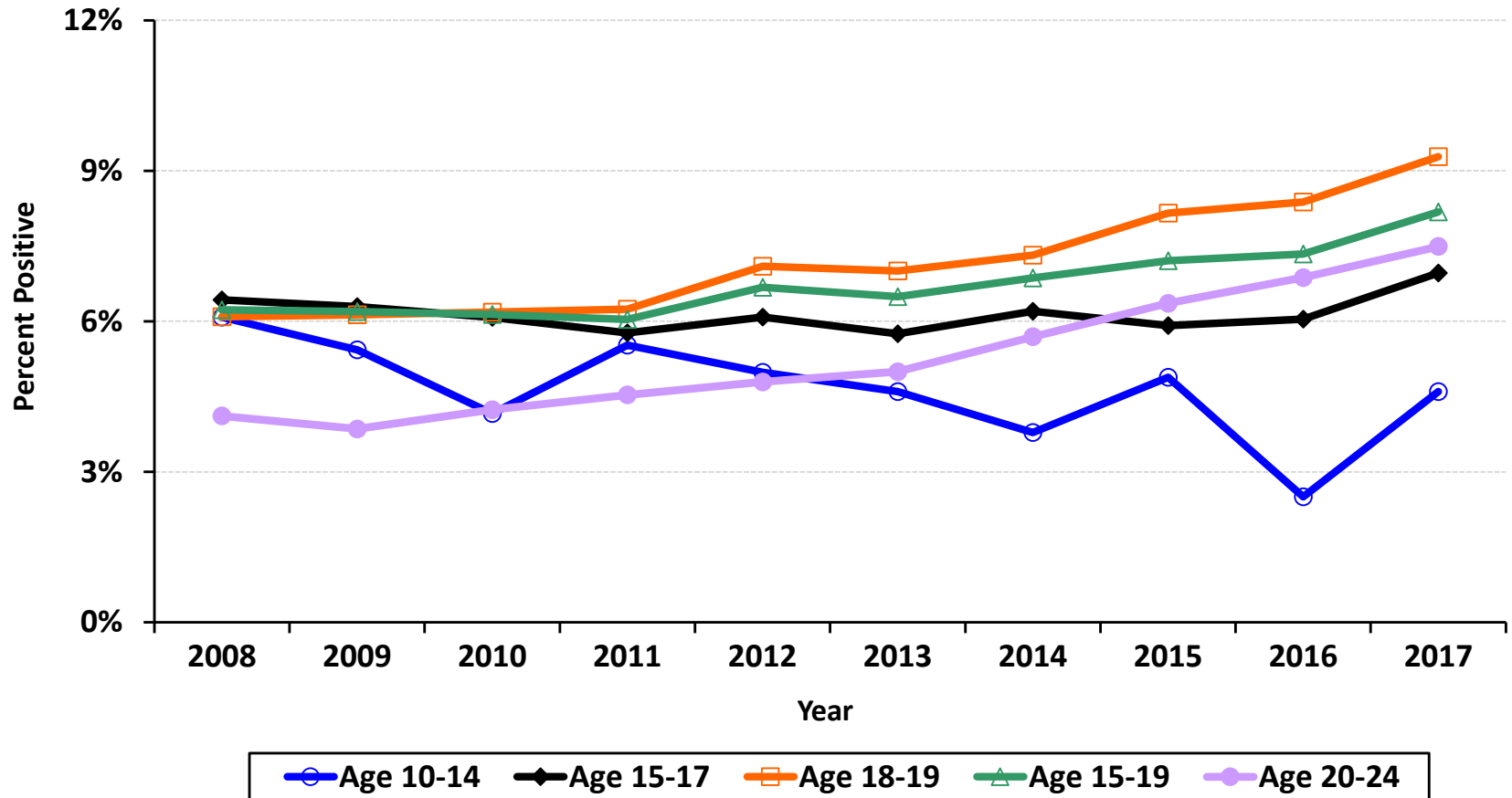
# Chlamydia Prevalence Monitoring – Family Planning Title X Clinics Percent Positive for Adolescent/Young Adult Females by Age Group California, 2008–2017



Data Source: California Department of Public Health, STD Control Branch

Prepared by: California Department of Public Health, STD Control Branch, November 2019

# Chlamydia Prevalence Monitoring – Family Planning Quest Clinics Percent Positive for Adolescent/Young Adult Females by Age Group California, 2008–2017



Data Source: California Department of Public Health, STD Control Branch  
 Prepared by: California Department of Public Health, STD Control Branch, November 2019

# Chlamydia Prevalence Monitoring for Adolescent/Young Adult Females in MCO\* and STD Clinics, by Age Group, California, 2008–2017

Chlamydia Prevalence Monitoring – Northern California MCO*, Percent Positive for Adolescent/Young Adult Females by Age Group, California, 2008–2017										
Age Group	2008	2009	2010	2011	2012	2013	2014	2015	2016	2017
10-14	5.0	3.7	2.7	2.5	1.8	2.2	1.7	1.4	1.9	2.5
15-17	5.4	5.2	5.0	4.6	4.4	4.1	3.6	3.9	4.1	4.5
18-19	6.9	7.1	7.4	7.0	7.0	6.5	6.4	6.6	7.3	7.6
[15-19]	6.2	6.1	6.1	5.7	5.6	5.2	5.0	5.2	5.7	6.1
20-24	3.7	3.8	4.3	4.4	4.3	4.3	4.5	4.7	4.5	4.7

Chlamydia Prevalence Monitoring – STD Clinics, Percent Positive for Adolescent/Young Adult Females by Age Group, California, 2008–2017										
Age Group	2008	2009	2010	2011	2012	2013	2014	2015	2016	2017
10-14 <sup>†</sup>	28.9	41.2	35.1	31.3	37.5	0.0	0.0	22.2	0.0	20.0
15-17 <sup>†</sup>	29.4	27.3	28.8	28.6	25.1	18.8	33.3	29.4	44.4	43.6
18-19	22.8	22.2	21.4	21.8	19.7	18.4	18.8	26.9	28.7	35.5
[15-19]	25.1	23.8	23.7	23.5	21.1	18.5	21.1	27.6	32.9	37.9
20-24	14.5	13.6	13.7	12.5	12.8	15.1	9.7	14.8	15.3	16.8

\* MCO = Managed Care Organization

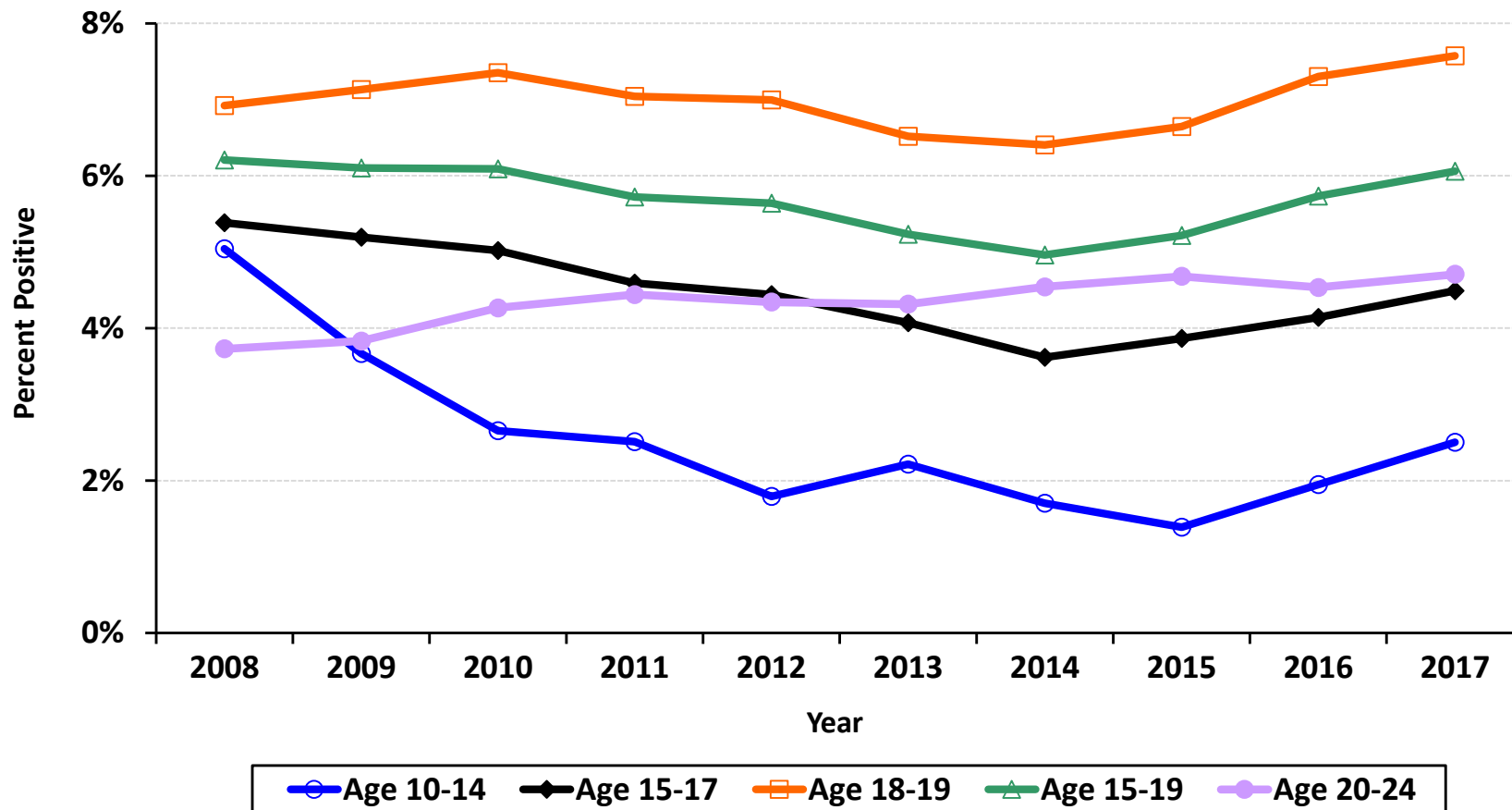
† STD clinic trends for ages 10-14 and 15-17 should be interpreted with caution as the number tested was very low.

Data Source: California Department of Public Health, STD Control Branch

Prepared by: California Department of Public Health, STD Control Branch, November 2019

# Chlamydia Prevalence Monitoring – Northern California MCO\*

## Percent Positive for Adolescent/Young Adult Females by Age Group California, 2008–2017



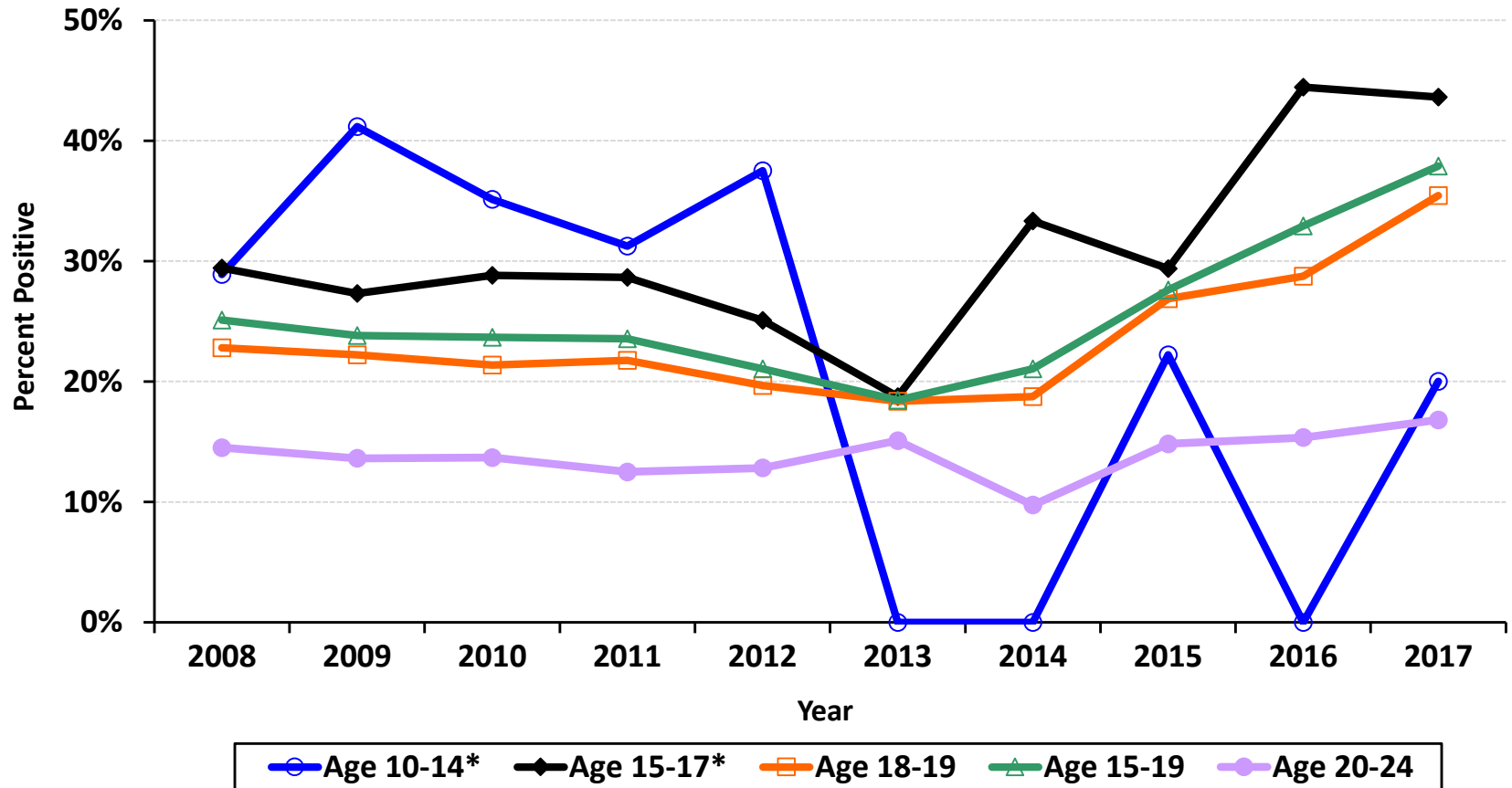
\* MCO = Managed Care Organization

Data Source: California Department of Public Health, STD Control Branch

Prepared by: California Department of Public Health, STD Control Branch, November 2019

# Chlamydia Prevalence Monitoring – STD Clinics

## Percent Positive for Adolescent/Young Adult Females by Age Group California, 2008–2017



† STD clinic trends for ages 10-14 and 15-17 should be interpreted with caution as the number tested was very low.

Data Source: California Department of Public Health, STD Control Branch

Prepared by: California Department of Public Health, STD Control Branch, November 2019

# Chlamydia Prevalence Monitoring for Adolescent Females in Juvenile Detention Facilities, by Age Group, California, 2008–2017

<b>Chlamydia Prevalence Monitoring – Juvenile Detention Facilities, Percent Positive for Adolescent/Young Adult Females by Age Group, California, 2008–2017</b>										
<b>Age Group</b>	<b>2008</b>	<b>2009</b>	<b>2010</b>	<b>2011</b>	<b>2012</b>	<b>2013</b>	<b>2014</b>	<b>2015</b>	<b>2016</b>	<b>2017</b>
10-14	8.4	9.4	10.5	9.8	9.0	9.1	8.0	10.9	10.4	9.3
15-17	12.5	11.9	13.1	13.2	13.2	13.0	12.7	13.5	13.7	14.8
18-19	12.6	9.8	14.6	8.9	12.4	10.2	8.0	11.3	14.2	16.3
[15-19]	12.5	11.8	13.2	12.9	13.1	12.8	12.3	13.3	13.7	14.9

\* Age group 20-24 excluded for juvenile detention facilities as the venue primarily targets adolescents

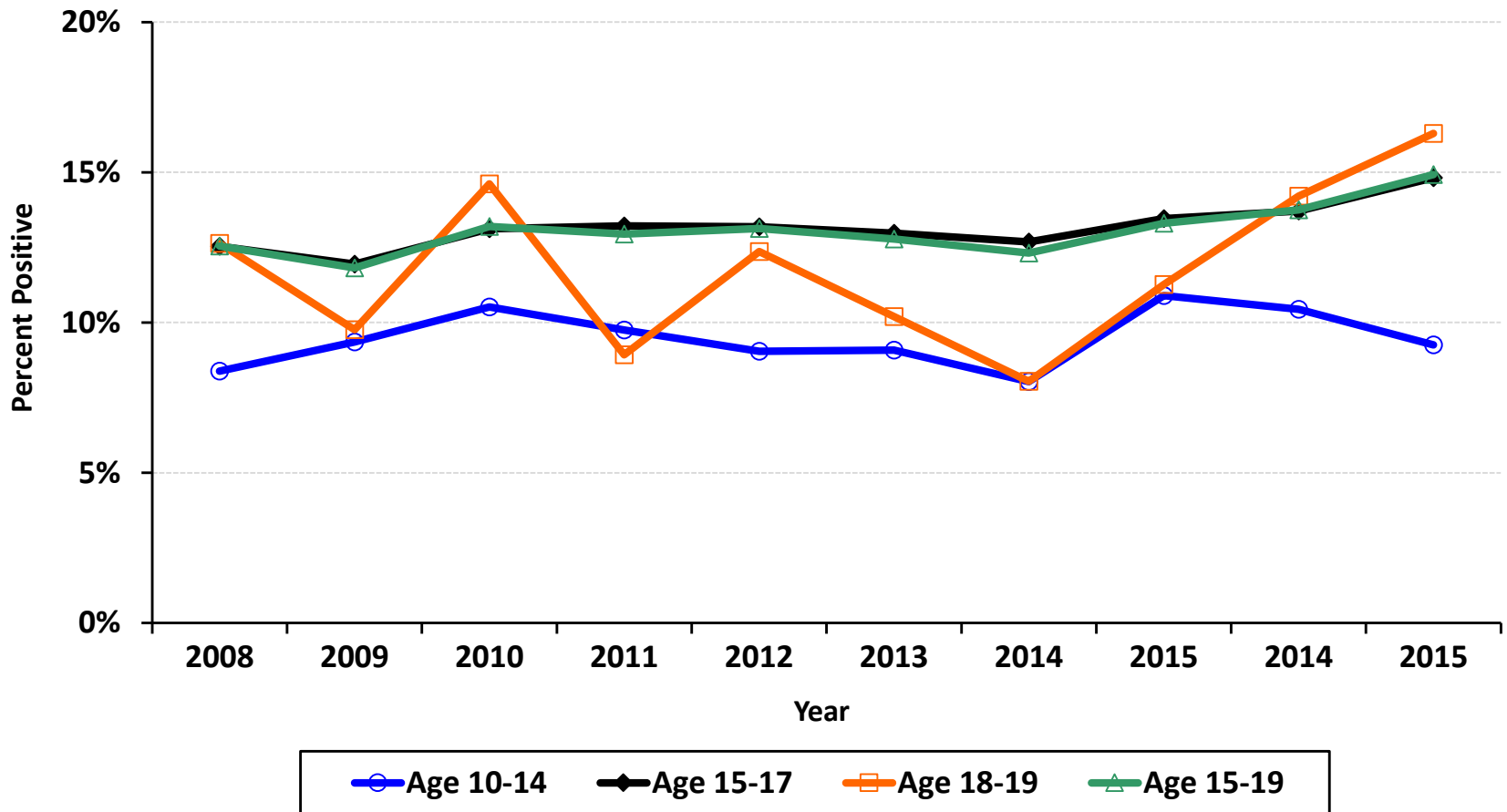
Data Source: California Department of Public Health, STD Control Branch

Prepared by: California Department of Public Health, STD Control Branch, November 2019

# Chlamydia Prevalence Monitoring – Juvenile Detention Facilities

## Percent Positive for Adolescent Females by Age Group

### California, 2008–2017



Data Source: California Department of Public Health, STD Control Branch

Prepared by: California Department of Public Health, STD Control Branch, November 2019