

California Adolescent Sexual Health Work Group (ASHWG) 2014 Data for California Adolescent Births, HIV/AIDS, STD

ASHWG Data and Evaluation Sub-Committee

Joan M. Chow, Laura Kovaleski, Denise Gilson
Sexually Transmitted Disease Control Branch
California Department of Public Health

Peter Oh
Office of AIDS, Center for Infectious Diseases
California Department of Public Health

**Marina J. Chabot, Natalie deGuzman, Tara Atyam,
Mary Campa**
Maternal, Child, and Adolescent Health
California Department of Public Health

Robert Gilchick
Los Angeles County Department of Public Health

**Mara Decker, Jennifer Yarger,
Heike Thiel de Bocanegra**
Bixby Center for Global Reproductive Health
University of California, San Francisco

Jill Michel, Maricel Miguelino, Patricia Lee
California Department of Health Care Services

Petra Jerman
Public Health Institute

Daniela Torres
California Department of Education

Eric Walsh-Buhi
California State University, San Diego

The California Adolescent Sexual Health Work Group (ASHWG) is a standing work group of program managers from the California Department of Public Health, California Department of Education, and key non-governmental organizations committed to working more effectively to address the sexual and reproductive health of California adolescents. Its vision is to create a coordinated, collaborative, and integrated system among government and non-government organizations to promote and protect the sexual and reproductive health of youth in California.

The ASHWG Data and Evaluation Subcommittee's intention is to improve comparability and expand access to and use of HIV, STD, and Adolescent Birth data. Members of this Sub-committee include epidemiologists from California Department of Public Health branches of Sexually Transmitted Diseases (STD) Control, Office of AIDS (OA), Maternal, Child and Adolescent Health (MCAH) and non-governmental "end users" of their data.

The ASHWG Data Tables and Charts for Adolescent Births, HIV/AIDS and STD are presented with standardized data elements across all conditions, i.e. age, race, gender, and timeframe. The purpose is to make useable data readily available for improved program planning, implementation and evaluation by programs serving adolescents at risk.

Resources

- *Sexually Transmitted Disease Surveillance, 2014*. Atlanta: U.S. Department of Health and Human Services; Release: Nov. 2015.
<https://www.cdc.gov/std/stats14/surv-2014-print.pdf>
- Centers for Disease Control and Prevention. HIV Surveillance in Adolescents and Young Adults (2009-2013):
http://www.cdc.gov/hiv/pdf/statistics_surveillance_Adolescents.pdf
- *Prevalence of Sexually Transmitted Infections Among Female Adolescents Aged 14 to 19 in the United States*, Geraldine M. McQuillan, Stuart M. Berman and Lauri E. Markowitz, Sara E. Forhan, Sami L. Gottlieb, Maya R. Sternberg, Fujie Xu, S. Deblina Datta, *Pediatrics*, Volume 124, Number 6, December 2009.
<http://pediatrics.aappublications.org/cgi/content/abstract/peds.2009-0674v1>
- Adolescent Birth Rates, Percentage of Repeat Births and Births in High Poverty Areas by Medical Service Study Area: California, Aggregated 2010-2012. Chabot MJ, Campa M, Barr L, Damesyn M. California Department of Public Health, Maternal, Child and Adolescent Health Division. Sacramento CA, 2015.
<https://archive.cdph.ca.gov/data/statistics/Pages/CAMSSAreport.aspx>

Additional Resources

- Adolescent Births in California, 2000-2014. California Department of Public Health, Maternal, Child and Adolescent Health Division. Sacramento CA, August 2016.
<https://www.cdph.ca.gov/Programs/CFH/DMCAH/CDPH%20Document%20Library/Data/Adolescent/Adolescent-Birth-Rates-2014.pdf>
- Adolescent Sexual and Reproductive Health County Profile. California Department of Public Health, Maternal, Child and Adolescent Health Division. Sacramento CA, 2014.
<https://archive.cdph.ca.gov/data/statistics/Pages/2014CountyProfiles.aspx>
- California Adolescent Sexual Needs Health Index (CASHNI). California Department of Public Health, Maternal, Child and Adolescent Health Division. Sacramento CA, 2014.
<https://archive.cdph.ca.gov/data/statistics/Documents/2014%20California%20Adolescent%20Sexual%20Health%20Needs%20Index.pdf>

Birth Rates for Females Age 10-19 by Mother's Age California, 2005–2014

| Adolescent Birth Rates* and Births by Mother's Age, For California Females** Age 10-19, 2005–2014 | | | | | | | | | | |
|---|--------|------------|--------|------------|--------|------------|--------|------------|--------|------------|
| Age Group | 2005 | | 2006 | | 2007 | | 2008 | | 2009 | |
| | Births | Birth Rate | Births | Birth Rate | Births | Birth Rate | Births | Birth Rate | Births | Birth Rate |
| 10-14 | 756 | 0.5 | 681 | 0.5 | 663 | 0.5 | 624 | 0.5 | 548 | 0.4 |
| 15-17 | 16,740 | 20.3 | 17,208 | 20.0 | 17,582 | 19.9 | 17,008 | 19.1 | 15,418 | 17.5 |
| 18-19 | 33,277 | 63.9 | 35,562 | 66.3 | 35,811 | 64.3 | 34,696 | 59.6 | 32,393 | 53.5 |
| 15-19 | 50,017 | 37.2 | 52,770 | 37.8 | 53,393 | 31.7 | 51,704 | 35.2 | 47,811 | 32.1 |

| Age Group | 2010 | | 2011 | | 2012 | | 2013 | | 2014 | |
|-----------|--------|------------|--------|------------|--------|------------|--------|------------|--------|------------|
| | Births | Birth Rate | Births | Birth Rate | Births | Birth Rate | Births | Birth Rate | Births | Birth Rate |
| 10-14 | 433 | 0.3 | 426 | 0.3 | 360 | 0.3 | 315 | 0.3 | 228 | 0.2 |
| 15-17 | 13,308 | 16.5 | 11,839 | 14.9 | 10,359 | 13.3 | 8,525 | 11.1 | 7,324 | 9.7 |
| 18-19 | 29,819 | 53.3 | 26,489 | 47.3 | 24,562 | 44.2 | 21,974 | 40.0 | 19,703 | 36.5 |
| 15-19 | 43,127 | 31.6 | 38,328 | 28.3 | 34,921 | 26.2 | 30,499 | 23.2 | 27,027 | 20.8 |

*Rate per 1,000 age-specific females

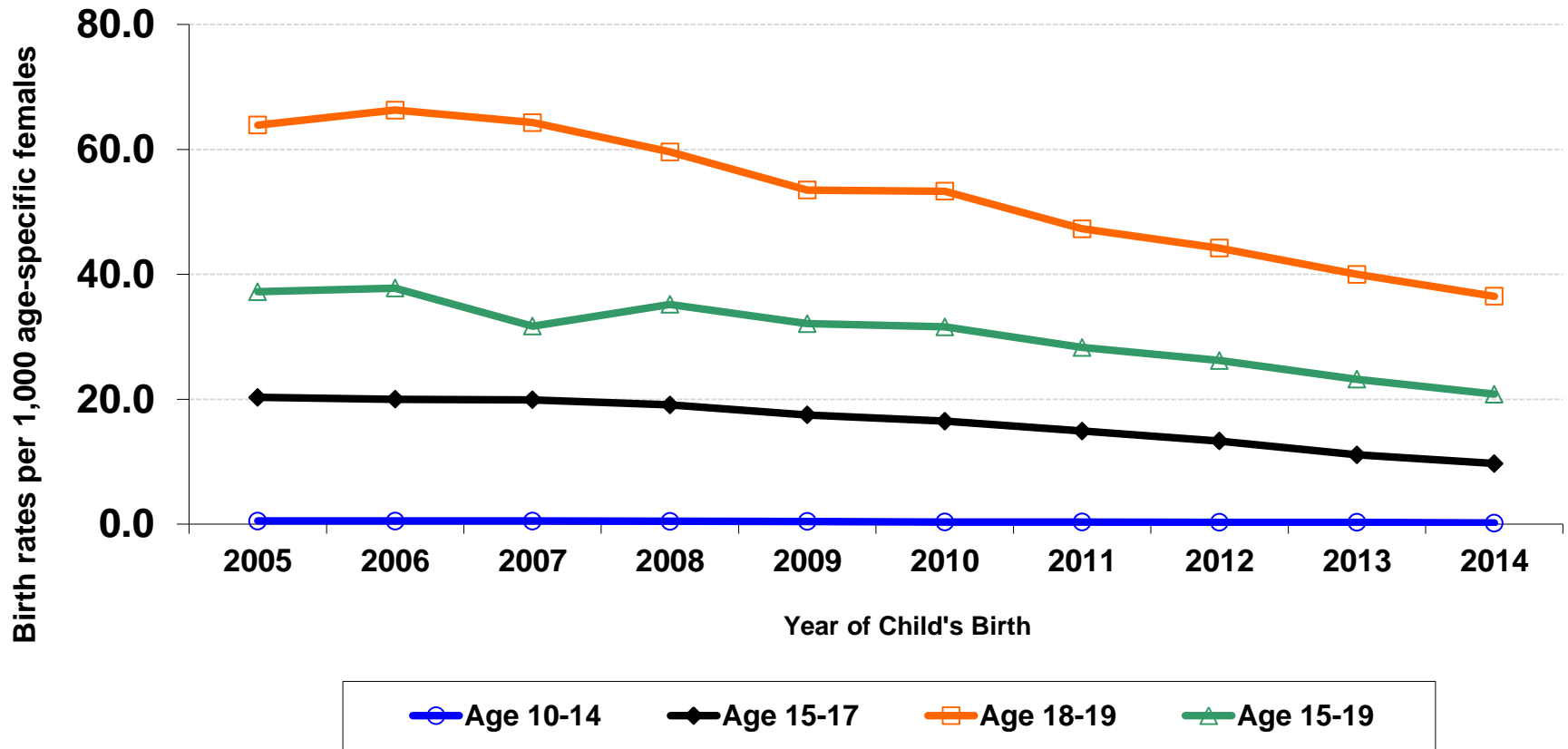
** Births included in these calculations are to mothers who report a California residence on the birth certification

Data Sources: Births: *Birth Statistical Master File*, 2001-2014 California Department of Public Health, Center for Health Statistics and Informatics.
Population: State of California, Department of Finance, *State and County Population Projections by Race/Ethnicity, Sex, and Age 2010-2060*, Sacramento, California, December 2014.

Notes: The California birth rates presented here differ from the rates computed on the basis of other population estimates such as those published by the National Center for Health Statistics. These revised rates differ and should not be compared to rates published previously, which were based on the California Department of Finance population projections as of July, 2007 or January 2013. Rates are not computed for fewer than 20 events.

Prepared by: California Department of Public Health, Maternal, Child and Adolescent Health Division, Epidemiology, Assessment and Program Development Branch.

Birth Rates for Females Age 10-19 by Mother's Age California, 2005–2014



Data Sources: Births: *Birth Statistical Master File*, 2000-2014 California Department of Public Health, Center for Health Statistics and Informatics. Population: State of California, Department of Finance, *State and County Population Projections by Race/Ethnicity, Sex, and Age 2010-2060*, Sacramento, California, December 2014.

Notes: The California birth rates presented here differ from the rates computed on the basis of other population estimates such as those published by the National Center for Health Statistics. These revised rates differ and should not be compared to rates published previously, which were based on the California Department of Finance population projections as of July, 2007 or January 2013. Rates are not computed for fewer than 20 events.

Prepared by: California Department of Public Health, Maternal, Child and Adolescent Health Division, Epidemiology, Assessment and Program Development Branch.

Birth Rates for Females Age 15-19 by Race/Ethnicity California, 2005–2014

| Adolescent Birth Rates* and Births by Race/Ethnicity, For California Females** Age 15-19, 2005–2014 | | | | | | | | | | |
|---|--------|------------|--------|------------|--------|------------|--------|------------|--------|------------|
| Race/Ethnicity | 2005 | | 2006 | | 2007 | | 2008 | | 2009 | |
| | Births | Birth Rate | Births | Birth Rate | Births | Birth Rate | Births | Birth Rate | Births | Birth Rate |
| White | 7,028 | 15.4 | 7,118 | 15.8 | 6,995 | 15.7 | 6,690 | 15.3 | 5,976 | 14.3 |
| African American/Black | 3,819 | 42.0 | 4,143 | 45.1 | 4,169 | 45.0 | 4,099 | 44.0 | 3,741 | 40.5 |
| Native American/Alaskan Native | 281 | 41.4 | 271 | 40.1 | 278 | 41.4 | 262 | 39.4 | 252 | 38.5 |
| Asian/Pacific Islander | 1,675 | 11.1 | 1,549 | 10.5 | 1,617 | 10.6 | 1,432 | 9.2 | 1,271 | 8.6 |
| Hispanic/Latino | 36,025 | 65.2 | 38,243 | 66.9 | 38,738 | 65.4 | 37,524 | 61.3 | 34,844 | 54.6 |

| Race/Ethnicity | 2010 | | 2011 | | 2012 | | 2013 | | 2014 | |
|--------------------------------|--------|------------|--------|------------|--------|------------|--------|------------|--------|------------|
| | Births | Birth Rate | Births | Birth Rate | Births | Birth Rate | Births | Birth Rate | Births | Birth Rate |
| White | 5,374 | 13.1 | 4,565 | 11.4 | 4,097 | 10.5 | 3,531 | 9.3 | 3,117 | 8.4 |
| African American/Black | 3,333 | 37.3 | 2,969 | 34.1 | 2,610 | 31.0 | 2,299 | 28.3 | 1,920 | 24.6 |
| Native American/Alaskan Native | 215 | 35.2 | 171 | 28.5 | 179 | 30.7 | 168 | 29.4 | 141 | 25.7 |
| Asian/Pacific Islander | 1,091 | 7.0 | 916 | 6.0 | 831 | 5.5 | 722 | 4.8 | 610 | 4.2 |
| Hispanic/Latino | 31,564 | 48.1 | 28,294 | 43.1 | 25,761 | 39.5 | 22,592 | 34.9 | 20,129 | 31.3 |

*Rate per 1,000 age-specific females

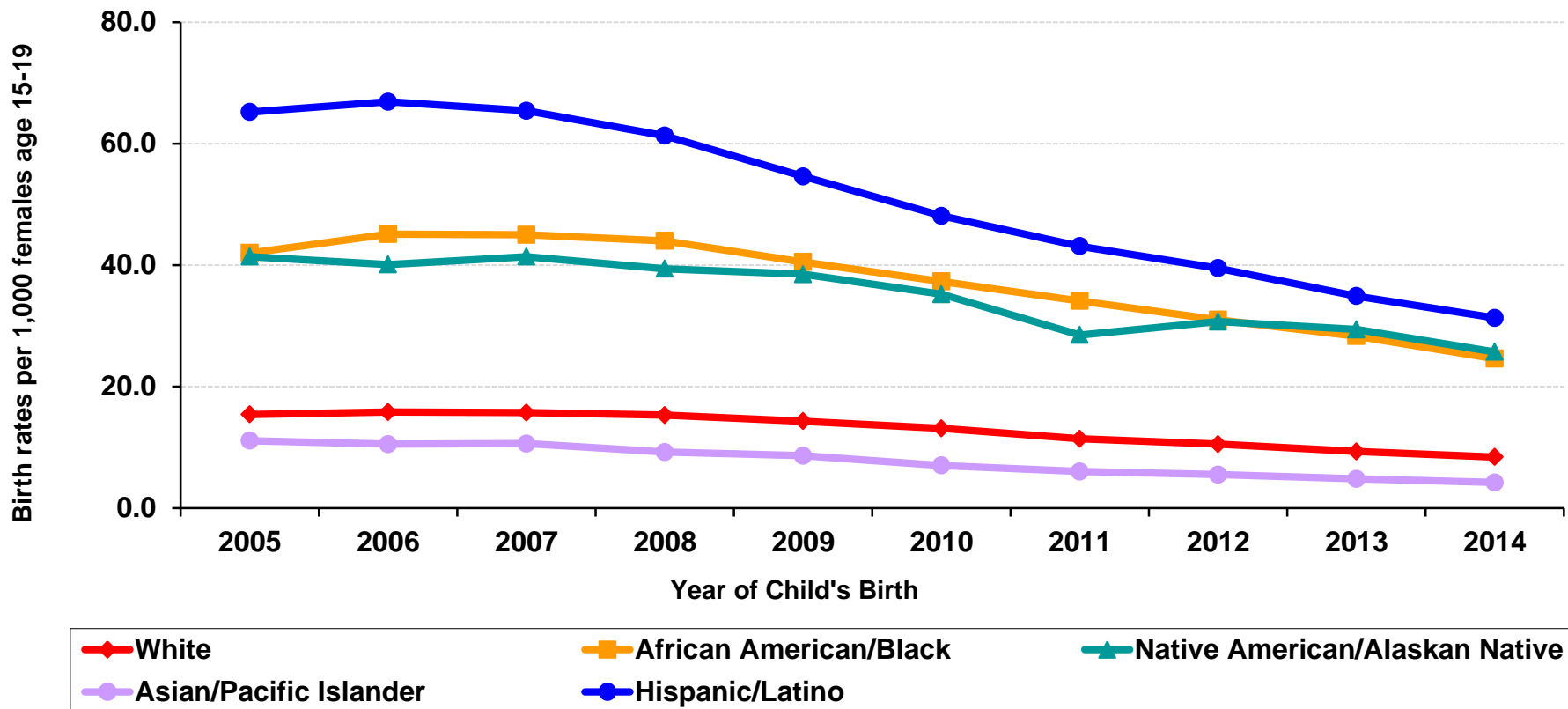
** Births included in these calculations are to mothers who report a California residence on the birth certification

Data Sources: Births: *Birth Statistical Master File*, 2001-2014 California Department of Public Health, Center for Health Statistics and Informatics. Population: State of California, Department of Finance, *State and County Population Projections by Race/Ethnicity, Sex, and Age 2010-2060*, Sacramento, California, December 2014.

Notes: The California birth rates presented here differ from the rates computed on the basis of other population estimates such as those published by the National Center for Health Statistics. These revised rates differ and should not be compared to rates published previously, which were based on the California Department of Finance population projections as of July, 2007 or January 2013. Rates are not computed for fewer than 20 events.

Prepared by: California Department of Public Health, Maternal, Child and Adolescent Health Division, Epidemiology, Assessment and Program Development Branch.

Birth Rates for Females Age 15-19 by Race/Ethnicity California, 2005–2014



Data Sources: Births: *Birth Statistical Master File*, 2000-2014 California Department of Public Health, Center for Health Statistics and Informatics. Population: State of California, Department of Finance, *State and County Population Projections by Race/Ethnicity, Sex, and Age 2010-2060*, Sacramento, California, December 2014.

Notes: The California birth rates presented here differ from the rates computed on the basis of other population estimates such as those published by the National Center for Health Statistics. These revised rates differ and should not be compared to rates published previously, which were based on the California Department of Finance population projections as of July, 2007 or January 2013. Rates are not computed for fewer than 20 events.

Prepared by: California Department of Public Health, Maternal, Child and Adolescent Health Division, Epidemiology, Assessment and Program Development Branch.

Rates for Adolescents/Young Adults Living with HIV - California

| Adolescents/Young Adults Living with HIV, Cases and Rates by Gender, Race/Ethnicity, and Age Group, Cases Diagnosed through 12/31/2014, as Reported Through 12/31/2015 | | | | |
|--|--------|-------|-------|-------|
| Age Group by Race/Ethnicity | Female | | Male | |
| | Cases | Rate | Cases | Rate |
| African American/Black | | | | |
| Ages 10 - 14 | 20 | 29.5 | 24 | 34.2 |
| 15 - 17 | 19 | 42.4 | 15 | 32.1 |
| 18 - 19 | 31 | 93.3 | 51 | 143.4 |
| (15 - 19) | 50 | 64.0 | 66 | 80.2 |
| 20 - 24 | 175 | 192.0 | 657 | 647.5 |
| Hispanic/Latino | | | | |
| Ages 10 - 14 | 26 | 4.1 | 18 | 2.7 |
| 15 - 17 | 28 | 7.3 | 41 | 10.4 |
| 18 - 19 | 42 | 16.0 | 60 | 22.0 |
| (15 - 19) | 70 | 10.9 | 101 | 15.1 |
| 20 - 24 | 154 | 23.6 | 1,134 | 161.3 |
| White | | | | |
| Ages 10 - 14 | 13 | 3.9 | 6 | 1.7* |
| 15 - 17 | 4 | 1.9* | 9 | 4.0* |
| 18 - 19 | 16 | 10.1 | 32 | 18.7 |
| (15 - 19) | 20 | 5.4 | 41 | 10.4 |
| 20 - 24 | 59 | 13.9 | 502 | 106.2 |
| Other/Unknown | | | | |
| Ages 10 - 14 | 6 | – | 8 | – |
| 15 - 17 | 3 | – | 2 | – |
| 18 - 19 | 2 | – | 8 | – |
| (15 - 19) | 5 | – | 10 | – |
| 20 - 24 | 26 | – | 207 | – |
| Totals | | | | |
| Ages 10 - 14 | 65 | 5.3 | 56 | 4.4 |
| 15 - 17 | 54 | 7.1 | 67 | 8.5 |
| 18 - 19 | 91 | 16.8 | 151 | 26.4 |
| (15 - 19) | 145 | 11.2 | 218 | 16.0 |
| 20 - 24 | 414 | 29.8 | 2,500 | 165.6 |

Rates are per 100,000 population.

*Rates calculated with numerators of ≤ 12 are statistically unstable and should be interpreted with caution.

Other/Unknown includes Asian, Pacific Islanders, Native American, and Multi-Race.

– No rates were calculated for the Other/Unknown group due to unknown population size.

Includes all cases diagnosed with HIV whose last known residence was in California.

Data Source: California Department of Public Health, Office of AIDS, Surveillance Section (2016)

Population: State of California, Department of Finance, *Report P-3: State and County Population Projections by Race/Ethnicity, Detailed Age, and Gender, 2010-2060*. Sacramento, California, December 2014

Prepared by: California Department of Public Health, Office of AIDS, Surveillance Section



Rates for Adolescents/Young Adults Living with HIV - California

| Adolescent/Young Adults Living with HIV, Cases Reporting Sexual Risk Behavior and Rates by Gender, Race/Ethnicity, and Age Group, Cases Diagnosed through 12/31/2014, as Reported Through 12/31/2015 | | | | | |
|--|-----------|--------|-------|-------|-------|
| Age Group by Race/Ethnicity | | Female | | Male | |
| | | Cases | Rate | Cases | Rate |
| African American/Black | | | | | |
| Ages | 10 - 14 | * | ^ | * | ^ |
| | 15 - 17 | 8 | 17.8 | * | ^ |
| | 18 - 19 | 13 | 39.1 | 36 | 101.2 |
| | (15 - 19) | 21 | 26.9 | 39 | 47.4 |
| | 20 - 24 | 127 | 139.4 | 622 | 613.0 |
| Hispanic/Latino | | | | | |
| Ages | 10 - 14 | 0 | 0.0 | * | ^ |
| | 15 - 17 | 10 | 2.6 | 13 | 3.3 |
| | 18 - 19 | 17 | 6.5 | 51 | 18.7 |
| | (15 - 19) | 27 | 4.2 | 64 | 9.6 |
| | 20 - 24 | 97 | 14.9 | 1,076 | 153.0 |
| White | | | | | |
| Ages | 10 - 14 | * | ^ | * | ^ |
| | 15 - 17 | * | ^ | 7 | 3.1 |
| | 18 - 19 | * | ^ | 23 | 13.4 |
| | (15 - 19) | * | ^ | 30 | 7.6 |
| | 20 - 24 | 34 | 8.0 | 464 | 98.2 |
| Other/Unknown | | | | | |
| Ages | 10 - 14 | * | – | * | – |
| | 15 - 17 | * | – | * | – |
| | 18 - 19 | * | – | 8 | – |
| | (15 - 19) | * | – | 9 | – |
| | 20 - 24 | 18 | – | 201 | – |
| Totals | | | | | |
| Ages | 10 - 14 | 6 | 0.5 | 9 | 0.7 |
| | 15 - 17 | 19 | 2.5 | 24 | 3.0 |
| | 18 - 19 | 35 | 6.5 | 118 | 20.6 |
| | (15 - 19) | 54 | 4.2 | 142 | 10.4 |
| | 20 - 24 | 276 | 19.8 | 2,363 | 156.5 |

Rates are per 100,000 population. Rates calculated with numerators of ≤12 are statistically unstable and should be interpreted with caution.

* Data withheld to ensure case confidentiality.

^ Rates not calculated for suppressed case counts.

Other/Unknown includes Asian, Pacific Islanders, Native American, and Multi-Race.

– No rates were calculated for the Other/Unknown group due to unknown population size.

Cases attributable to Injection drug use (IDU) excluded where no high risk sexual contact also reported (men who have sex with men (MSM), sex with IDU, sex with MSM, sex with HIV positive partner).

Includes all cases diagnosed with HIV whose last known residence was in California.

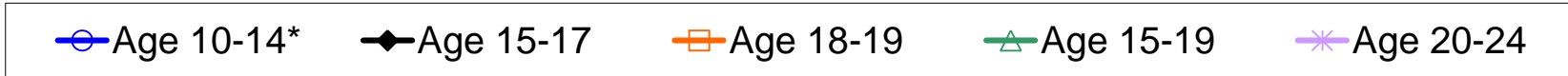
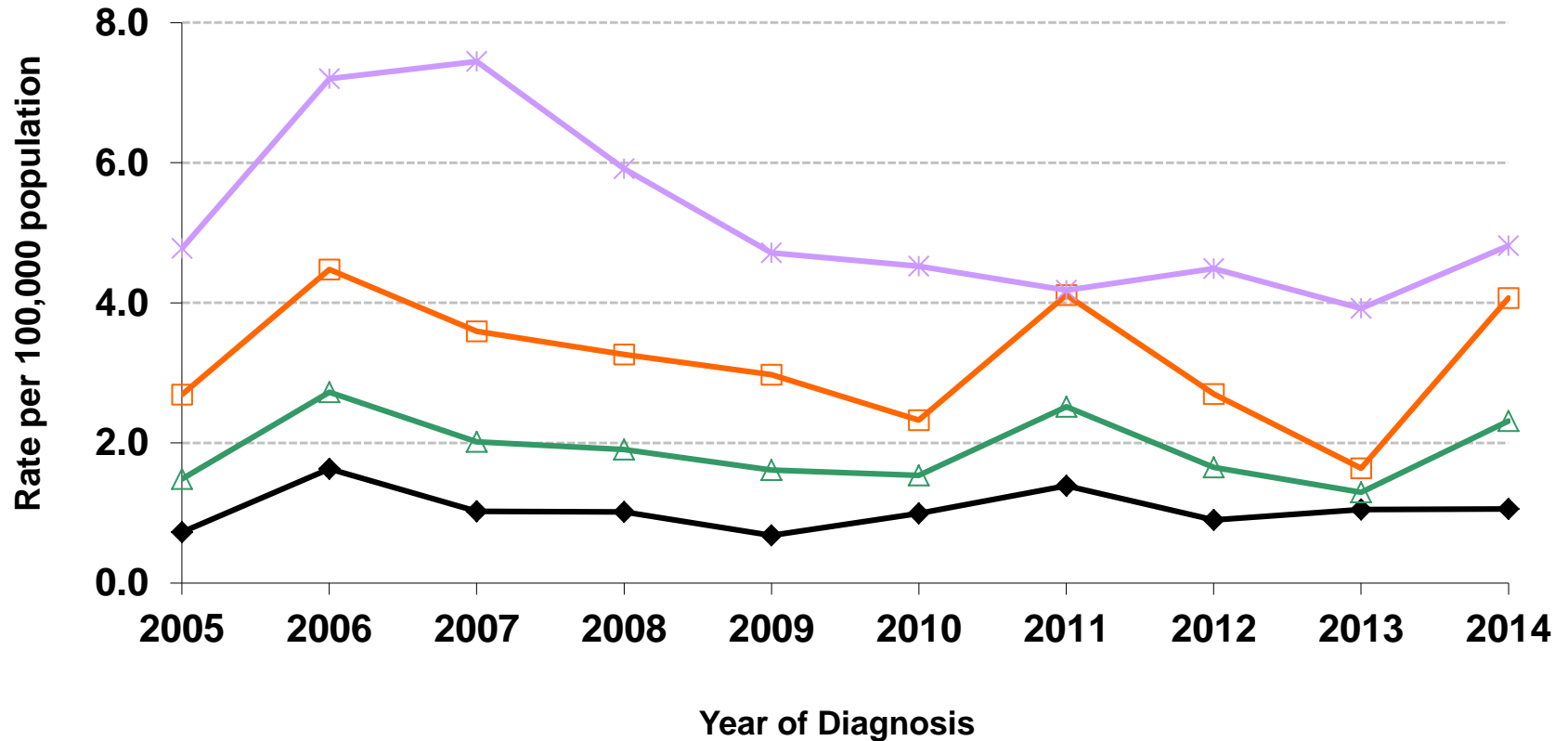
Data Source: California Department of Public Health, Office of AIDS, Surveillance Section (2016)

Population: State of California, Department of Finance, *Report P-3: State and County Population Projections by Race/Ethnicity, Detailed Age, and Gender, 2010-2060*. Sacramento, California, December 2014

Prepared by: California Department of Public Health, Office of AIDS, Surveillance Section



New HIV Diagnoses of Adolescent/Young Adult Females by Year of Diagnosis and Age Group, California, 2005–2014



* Data withheld to ensure case confidentiality

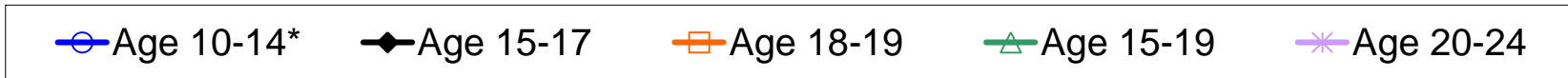
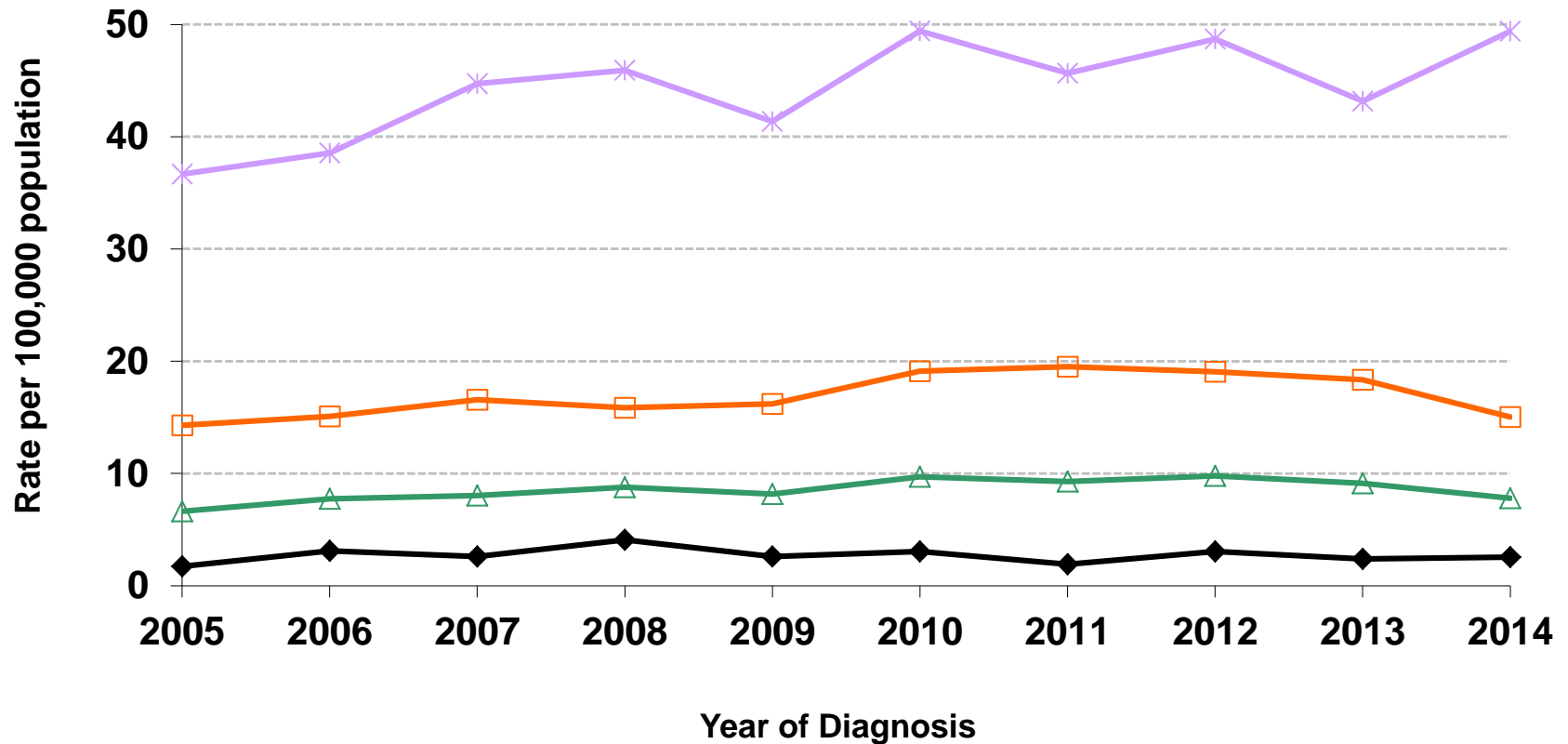
Data Sources: California Department of Public Health, Office of AIDS, Surveillance Section (2016)

Population: State of California, Department of Finance, *Race/Hispanics Population with Age and Gender Detail, 2000-2010*. Sacramento, California, September 2012; and State of California, Department of Finance, *Report P-3: State and County Population Projections by Race/Ethnicity, Detailed Age, and Gender, 2010-2060*. Sacramento, California, December 2014

Prepared by: California Department of Public Health, Office of AIDS, Surveillance Section



New HIV Diagnoses of Adolescent/Young Adult Males by Year of Diagnosis and Age Group, California, 2005–2014



* Data withheld to ensure case confidentiality

Data Sources: California Department of Public Health, Office of AIDS, Surveillance Section (2016)

Population: State of California, Department of Finance, *Race/Hispanics Population with Age and Gender Detail, 2000-2010*. Sacramento, California, September 2012; and State of California, Department of Finance, *Report P-3: State and County Population Projections by Race/Ethnicity, Detailed Age, and Gender, 2010-2060*. Sacramento, California, December 2014

Prepared by: California Department of Public Health, Office of AIDS, Surveillance Section



Chlamydia Rates for Adolescent Females by Age Group California, 2005–2014

| Chlamydia Cases & Rates* for Adolescent Females by Age Group California, 2005–2014 | | | | | | | | | | |
|--|--------|---------|--------|---------|--------|---------|--------|---------|--------|---------|
| Age Group | 2005 | | 2006 | | 2007 | | 2008 | | 2009 | |
| | Cases | Rate | Cases | Rate | Cases | Rate | Cases | Rate | Cases | Rate |
| 10-14 | 1,193 | 88.0 | 1,138 | 84.6 | 1,130 | 84.8 | 1,145 | 86.9 | 1,017 | 80.0 |
| 15-17 | 13,176 | 1,700.2 | 13,519 | 1,705.6 | 13,726 | 1,699.0 | 14,057 | 1,720.4 | 12,941 | 1,614.3 |
| 18-19 | 17,348 | 3,329.5 | 18,333 | 3,521.6 | 19,599 | 3,745.9 | 20,616 | 3,880.9 | 20,374 | 3,722.5 |
| 15-19 | 30,524 | 2,355.2 | 31,852 | 2,425.5 | 33,325 | 2,503.6 | 34,673 | 2,571.6 | 33,315 | 2,469.7 |

| Age Group | 2010 | | 2011 | | 2012 | | 2013 | | 2014 | |
|-----------|--------|---------|--------|---------|--------|---------|--------|---------|--------|---------|
| | Cases | Rate | Cases | Rate | Cases | Rate | Cases | Rate | Cases | Rate |
| 10-14 | 908 | 72.0 | 959 | 76.7 | 837 | 67.5 | 758 | 61.4 | 626 | 50.7 |
| 15-17 | 12,815 | 1,588.9 | 12,915 | 1,625.9 | 11,886 | 1,521.2 | 10,585 | 1,377.9 | 9,650 | 1,270.1 |
| 18-19 | 20,633 | 3,688.7 | 20,857 | 3,718.6 | 20,028 | 3,590.7 | 18,770 | 3,401.1 | 17,650 | 3,250.3 |
| 15-19 | 33,448 | 2,448.8 | 33,772 | 2,492.0 | 31,914 | 2,383.2 | 29,355 | 2,223.7 | 27,300 | 2,095.4 |

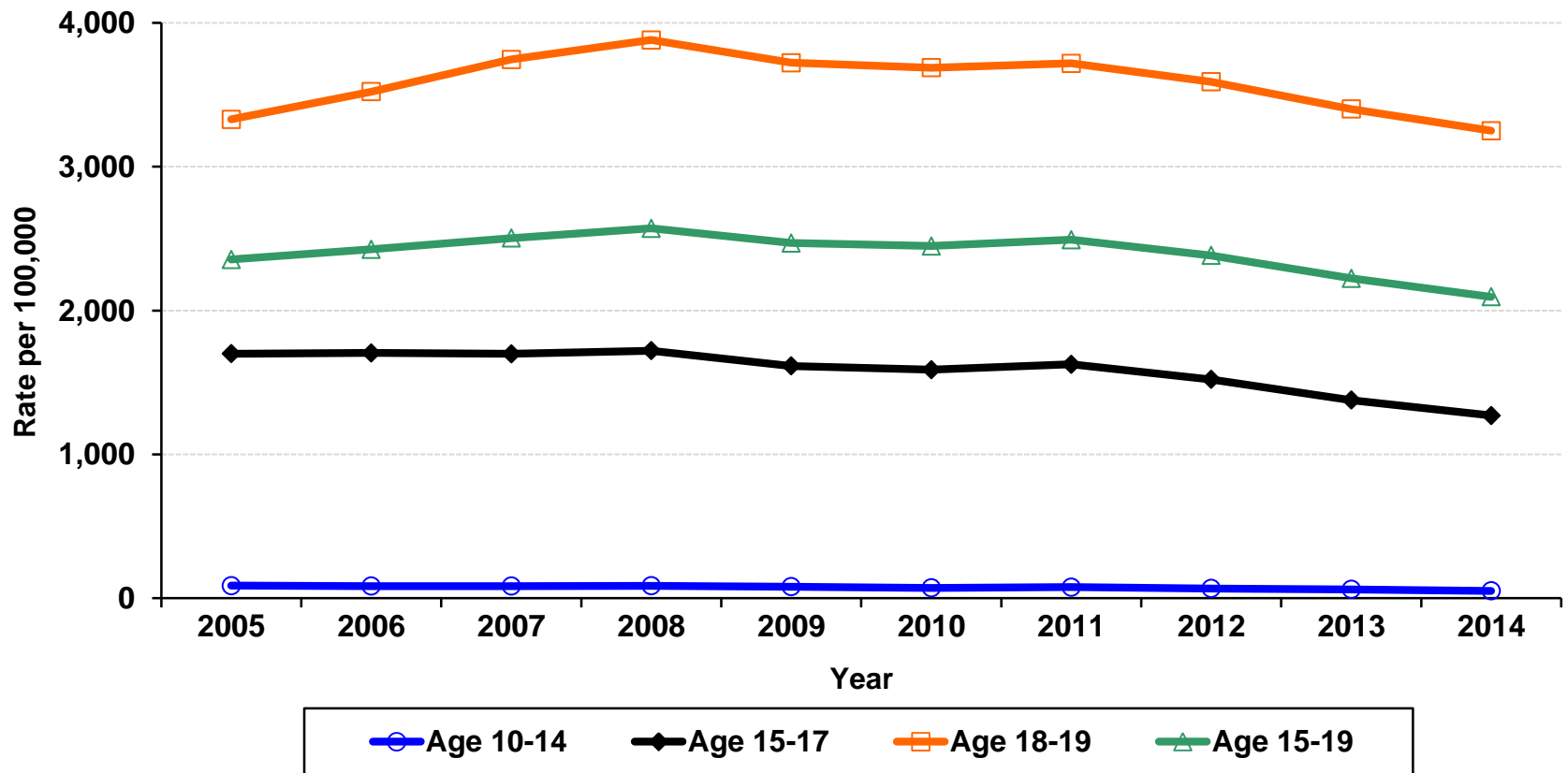
* Rate per 100,000 age- and gender-specific population

Data Sources: California Department of Public Health, STD Control Branch

Population: State of California, Department of Finance, *Race/Hispanics Population with Age and Gender Detail, 2000-2010*. Sacramento, California, September 2012; and State of California, Department of Finance, *Report P-3: State and County Population Projections by Race/Ethnicity, Detailed Age, and Gender, 2010-2060*. Sacramento, California, December 2014

Prepared by: California Department of Public Health, STD Control Branch, July 2016

Chlamydia Rates for Adolescent Females by Age Group California, 2005–2014



Data Sources: California Department of Public Health, STD Control Branch

Population: State of California, Department of Finance, *Race/Hispanics Population with Age and Gender Detail, 2000-2010*. Sacramento, California, September 2012; and State of California, Department of Finance, *Report P-3: State and County Population Projections by Race/Ethnicity, Detailed Age, and Gender, 2010-2060*. Sacramento, California, December 2014

Prepared by: California Department of Public Health, STD Control Branch, July 2016

Chlamydia Rates for Females Age 15-19 by Race/Ethnicity California, 2005–2014

Chlamydia Cases & Rates* by Race/Ethnicity, For Female California Residents Age 15-19, 2005–2014

| Race/Ethnicity | 2005 | | 2006 | | 2007 | | 2008 | | 2009 | |
|--------------------------------|-------|---------|--------|---------|--------|---------|--------|---------|--------|---------|
| | Cases | Rate | Cases | Rate | Cases | Rate | Cases | Rate | Cases | Rate |
| White | 4,145 | 909.1 | 4,063 | 901.1 | 4,381 | 985.5 | 4,259 | 973.1 | 4,153 | 993.1 |
| African American/Black | 5,946 | 6,542.7 | 6,383 | 6,950.8 | 6,567 | 7,095.2 | 6,955 | 7,467.6 | 6,647 | 7,202.4 |
| Native American/Alaskan Native | 111 | 1,637.3 | 116 | 1,718.4 | 149 | 2,218.2 | 139 | 2,088.0 | 104 | 1,589.3 |
| Asian/Pacific Islander | 873 | 579.5 | 878 | 579.5 | 909 | 593.5 | 937 | 605.1 | 890 | 602.9 |
| Hispanic/Latino | 9,971 | 1,804.1 | 10,243 | 1,791.5 | 10,618 | 1,793.3 | 10,914 | 1,782.7 | 10,710 | 1,678.3 |

| Race/Ethnicity | 2010 | | 2011 | | 2012 | | 2013 | | 2014 | |
|--------------------------------|--------|---------|--------|---------|--------|---------|--------|---------|-------|---------|
| | Cases | Rate | Cases | Rate | Cases | Rate | Cases | Rate | Cases | Rate |
| White | 4,004 | 976.9 | 4,296 | 1,070.3 | 4,332 | 1,103.8 | 4,027 | 1,051.8 | 3,558 | 950.3 |
| African American/Black | 6,856 | 7,675.1 | 6,232 | 7,140.5 | 5,360 | 6,336.9 | 4,589 | 5,626.5 | 4,053 | 5,168.1 |
| Native American/Alaskan Native | 93 | 1,524.2 | 133 | 2,210.9 | 110 | 1,878.4 | 100 | 1,742.3 | 107 | 1,941.2 |
| Asian/Pacific Islander | 873 | 561.9 | 822 | 535.6 | 786 | 517.6 | 719 | 480.8 | 698 | 472.7 |
| Hispanic/Latino | 10,012 | 1,524.4 | 10,736 | 1,632.8 | 11,211 | 1,713.6 | 10,299 | 1,585.1 | 9,140 | 1,414.8 |

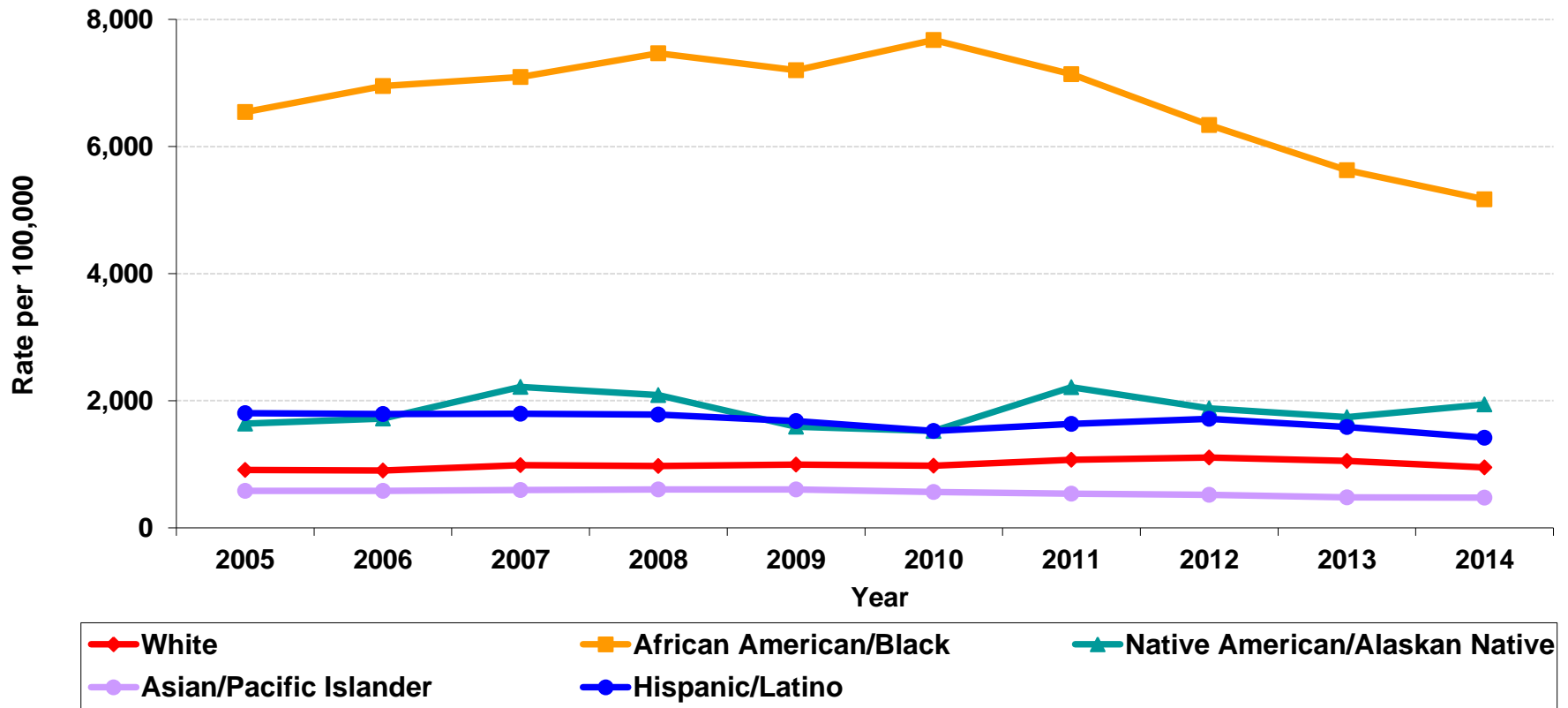
* Rate per 100,000 race-, age- and gender-specific population

Data Sources: California Department of Public Health, STD Control Branch

Population: State of California, Department of Finance, *Race/Hispanics Population with Age and Gender Detail, 2000-2010*. Sacramento, California, September 2012; and State of California, Department of Finance, *Report P-3: State and County Population Projections by Race/Ethnicity, Detailed Age, and Gender, 2010-2060*. Sacramento, California, December 2014

Prepared by: California Department of Public Health, STD Control Branch, July 2016

Chlamydia Rates for Females Age 15-19 by Race/Ethnicity California, 2005–2014



Data Sources: California Department of Public Health, STD Control Branch

Population: State of California, Department of Finance, *Race/Hispanics Population with Age and Gender Detail, 2000-2010*. Sacramento, California, September 2012; and State of California, Department of Finance, *Report P-3: State and County Population Projections by Race/Ethnicity, Detailed Age, and Gender, 2010-2060*. Sacramento, California, December 2014

Prepared by: California Department of Public Health, STD Control Branch, July 2016

Chlamydia Rates for Adolescent Males by Age Group California, 2005–2014

| Chlamydia Cases & Rates* for Adolescent Males by Age Group California, 2005–2014 | | | | | | | | | | |
|--|-------|-------|-------|-------|-------|-------|-------|-------|-------|-------|
| Age Group | 2005 | | 2006 | | 2007 | | 2008 | | 2009 | |
| | Cases | Rate | Cases | Rate | Cases | Rate | Cases | Rate | Cases | Rate |
| 10-14 | 142 | 9.9 | 148 | 10.5 | 142 | 10.1 | 180 | 13.1 | 157 | 11.9 |
| 15-17 | 3,067 | 371.5 | 3,200 | 377.8 | 3,354 | 388.4 | 3,531 | 404.1 | 3,286 | 386.6 |
| 18-19 | 3,924 | 699.7 | 4,200 | 744.6 | 4,724 | 832.3 | 5,122 | 890.6 | 5,306 | 899.3 |
| 15-19 | 6,991 | 504.3 | 7,400 | 524.4 | 8,078 | 564.4 | 8,653 | 597.3 | 8,592 | 596.7 |

| Age Group | 2010 | | 2011 | | 2012 | | 2013 | | 2014 | |
|-----------|-------|-------|-------|-------|-------|-------|-------|-------|-------|-------|
| | Cases | Rate | Cases | Rate | Cases | Rate | Cases | Rate | Cases | Rate |
| 10-14 | 174 | 13.2 | 148 | 11.3 | 125 | 9.6 | 116 | 9.0 | 94 | 7.3 |
| 15-17 | 3,237 | 379.5 | 3,190 | 381.1 | 2,860 | 348.8 | 2,684 | 334.0 | 2,518 | 317.5 |
| 18-19 | 5,521 | 917.5 | 5,346 | 889.5 | 5,195 | 873.2 | 4,775 | 815.3 | 4,725 | 821.8 |
| 15-19 | 8,758 | 602.1 | 8,536 | 593.6 | 8,055 | 569.3 | 7,459 | 536.9 | 7,243 | 529.4 |

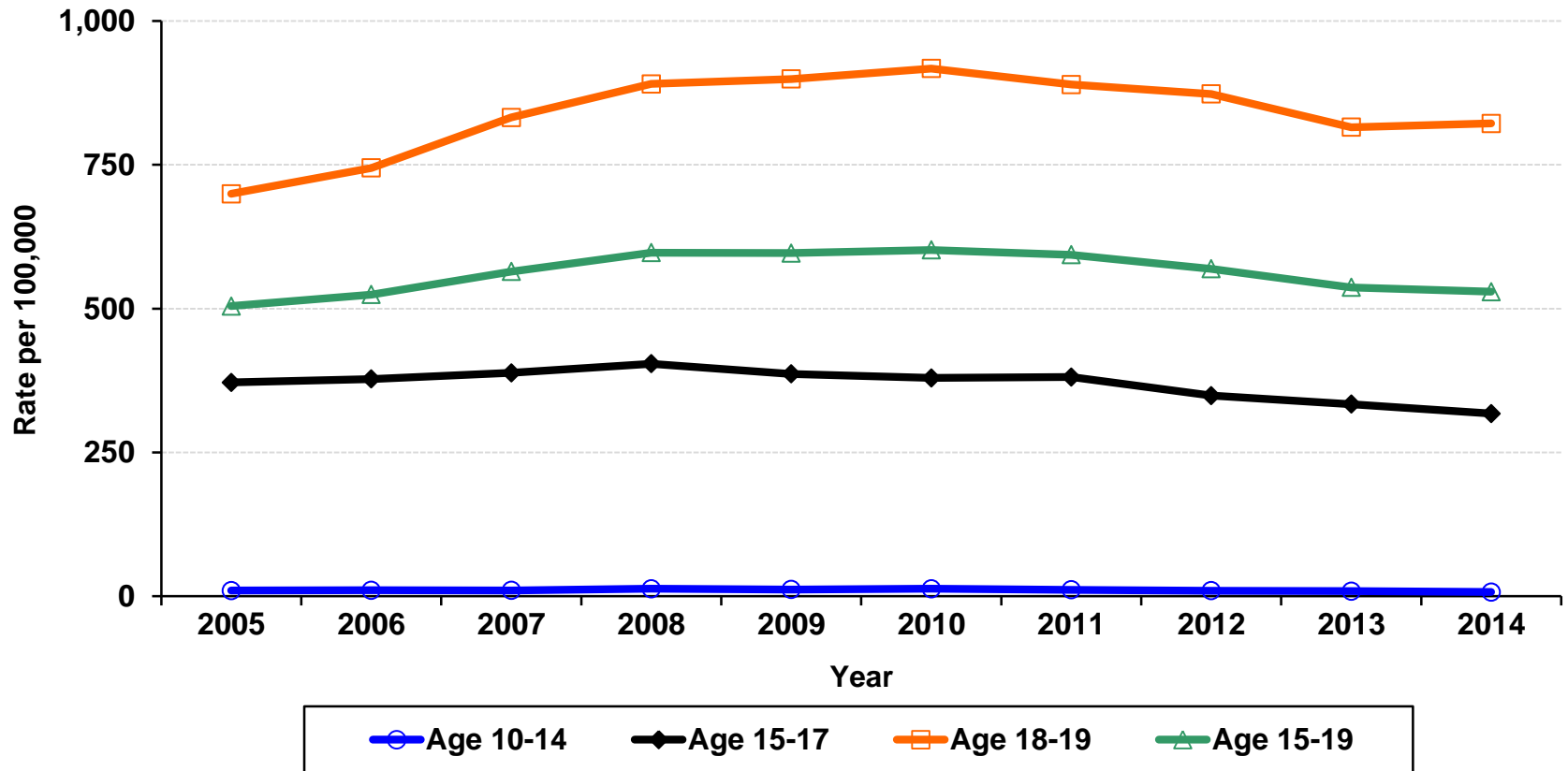
* Rate per 100,000 age- and gender-specific population

Data Sources: California Department of Public Health, STD Control Branch

Population: State of California, Department of Finance, *Race/Hispanics Population with Age and Gender Detail, 2000-2010*. Sacramento, California, September 2012; and State of California, Department of Finance, *Report P-3: State and County Population Projections by Race/Ethnicity, Detailed Age, and Gender, 2010-2060*. Sacramento, California, December 2014

Prepared by: California Department of Public Health, STD Control Branch, July 2016

Chlamydia Rates for Adolescent Males by Age Group California, 2005–2014



Data Sources: California Department of Public Health, STD Control Branch

Population: State of California, Department of Finance, *Race/Hispanics Population with Age and Gender Detail, 2000-2010*. Sacramento, California, September 2012; and State of California, Department of Finance, *Report P-3: State and County Population Projections by Race/Ethnicity, Detailed Age, and Gender, 2010-2060*. Sacramento, California, December 2014

Prepared by: California Department of Public Health, STD Control Branch, July 2016

Chlamydia Rates for Males Age 15-19 by Race/Ethnicity California, 2005–2014

| Chlamydia Cases & Rates* by Race/Ethnicity, For Male California Residents Age 15-19, 2005–2014 | | | | | | | | | | |
|--|-------|---------|-------|---------|-------|---------|-------|---------|-------|---------|
| Race/Ethnicity | 2005 | | 2006 | | 2007 | | 2008 | | 2009 | |
| | Cases | Rate | Cases | Rate | Cases | Rate | Cases | Rate | Cases | Rate |
| White | 676 | 139.0 | 650 | 134.1 | 728 | 152.1 | 700 | 148.5 | 703 | 156.9 |
| African American/Black | 1,886 | 2,010.8 | 2,097 | 2,197.2 | 2,229 | 2,304.0 | 2,455 | 2,508.8 | 2,375 | 2,444.7 |
| Native American/Alaskan Native | 18 | 251.1 | 16 | 222.8 | 18 | 250.3 | 22 | 303.6 | 19 | 271.3 |
| Asian/Pacific Islander | 143 | 89.4 | 117 | 72.4 | 170 | 103.5 | 147 | 88.2 | 122 | 76.0 |
| Hispanic/Latino | 2,243 | 373.4 | 2,280 | 366.2 | 2,417 | 375.8 | 2,604 | 393.1 | 2,669 | 392.1 |

| Race/Ethnicity | 2010 | | 2011 | | 2012 | | 2013 | | 2014 | |
|--------------------------------|-------|---------|-------|---------|-------|---------|-------|---------|-------|---------|
| | Cases | Rate | Cases | Rate | Cases | Rate | Cases | Rate | Cases | Rate |
| White | 735 | 166.0 | 782 | 181.1 | 757 | 180.0 | 721 | 176.5 | 692 | 173.9 |
| African American/Black | 2,492 | 2,620.7 | 2,149 | 2,321.0 | 1,800 | 2,018.5 | 1,540 | 1,796.3 | 1,520 | 1,838.8 |
| Native American/Alaskan Native | 25 | 388.2 | 34 | 536.3 | 18 | 293.3 | 25 | 416.1 | 25 | 422.2 |
| Asian/Pacific Islander | 135 | 81.8 | 122 | 74.5 | 133 | 82.0 | 116 | 72.6 | 120 | 76.2 |
| Hispanic/Latino | 2,475 | 355.6 | 2,544 | 367.1 | 2,698 | 393.5 | 2,474 | 365.3 | 2,324 | 345.9 |

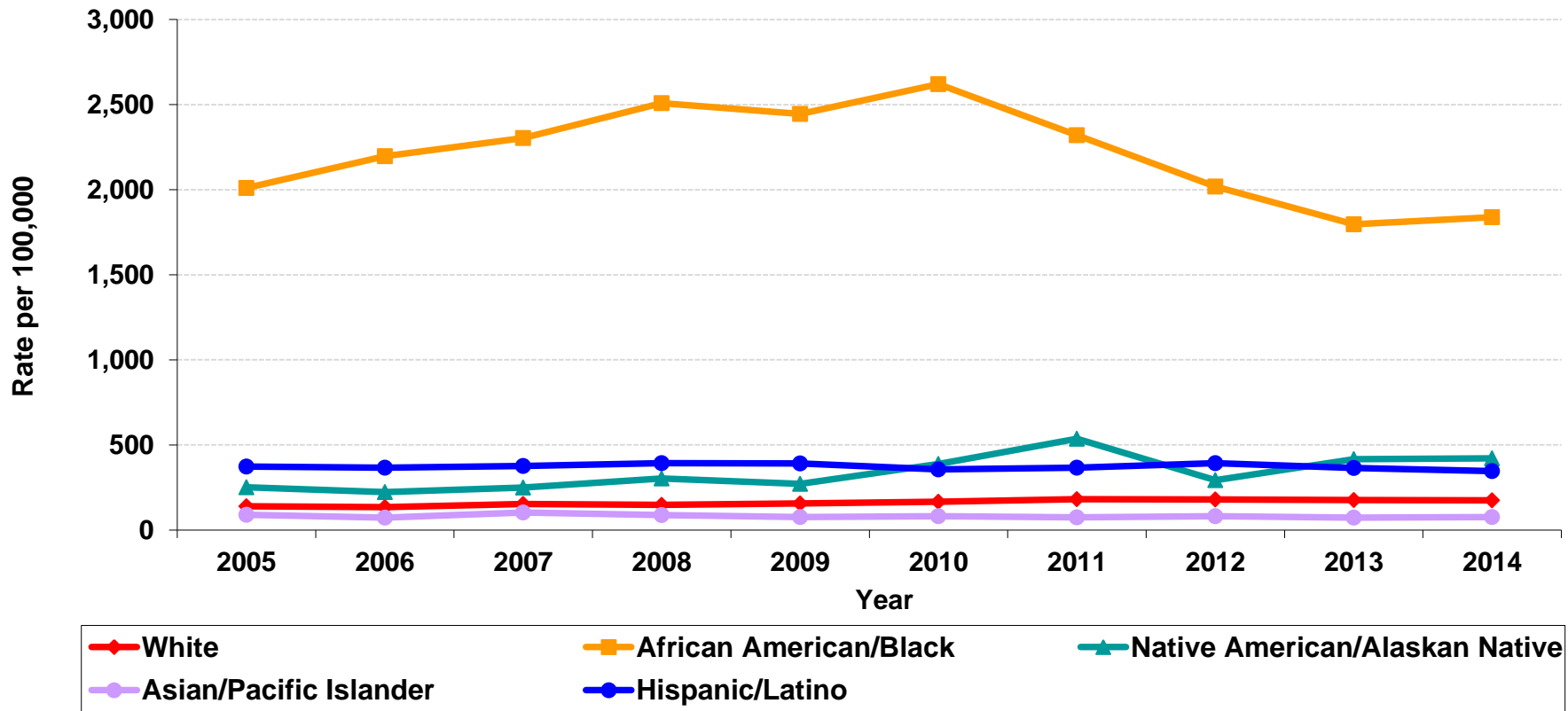
* Rate per 100,000 race-, age- and gender-specific population

Data Sources: California Department of Public Health, STD Control Branch

Population: State of California, Department of Finance, *Race/Hispanics Population with Age and Gender Detail, 2000-2010*. Sacramento, California, September 2012; and State of California, Department of Finance, *Report P-3: State and County Population Projections by Race/Ethnicity, Detailed Age, and Gender, 2010-2060*. Sacramento, California, December 2014

Prepared by: California Department of Public Health, STD Control Branch, July 2016

Chlamydia Rates for Males Age 15-19 by Race/Ethnicity California, 2005–2014



Data Sources: California Department of Public Health, STD Control Branch

Population: State of California, Department of Finance, *Race/Hispanics Population with Age and Gender Detail, 2000-2010*. Sacramento, California, September 2012; and State of California, Department of Finance, *Report P-3: State and County Population Projections by Race/Ethnicity, Detailed Age, and Gender, 2010-2060*. Sacramento, California, December 2014

Prepared by: California Department of Public Health, STD Control Branch, July 2016

Gonorrhea Rates for Adolescent Females by Age Group California, 2005–2014

| Gonorrhea Cases & Rates* for Adolescent Females by Age Group California, 2005–2014 | | | | | | | | | | |
|--|-------|-------|-------|-------|-------|-------|-------|-------|-------|-------|
| Age Group | 2005 | | 2006 | | 2007 | | 2008 | | 2009 | |
| | Cases | Rate | Cases | Rate | Cases | Rate | Cases | Rate | Cases | Rate |
| 10-14 | 289 | 21.3 | 255 | 18.9 | 213 | 16.0 | 201 | 15.3 | 115 | 9.0 |
| 15-17 | 2,404 | 310.2 | 2,229 | 281.2 | 2,169 | 268.5 | 1,676 | 205.1 | 1,249 | 155.8 |
| 18-19 | 2,634 | 505.5 | 2,798 | 537.5 | 2,690 | 514.1 | 2,166 | 407.7 | 1,917 | 350.3 |
| 15-19 | 5,038 | 388.7 | 5,027 | 382.8 | 4,859 | 365.0 | 3,842 | 285.0 | 3,166 | 234.7 |

| Age Group | 2010 | | 2011 | | 2012 | | 2013 | | 2014 | |
|-----------|-------|-------|-------|-------|-------|-------|-------|-------|-------|-------|
| | Cases | Rate | Cases | Rate | Cases | Rate | Cases | Rate | Cases | Rate |
| 10-14 | 148 | 11.7 | 125 | 10.0 | 110 | 8.9 | 111 | 9.0 | 110 | 8.9 |
| 15-17 | 1,409 | 174.7 | 1,357 | 170.8 | 1,273 | 162.9 | 1,265 | 164.7 | 1,295 | 170.4 |
| 18-19 | 1,941 | 347.0 | 1,774 | 316.3 | 1,815 | 325.4 | 1,885 | 341.6 | 1,982 | 365.0 |
| 15-19 | 3,350 | 245.3 | 3,131 | 231.0 | 3,088 | 230.6 | 3,150 | 238.6 | 3,277 | 251.5 |

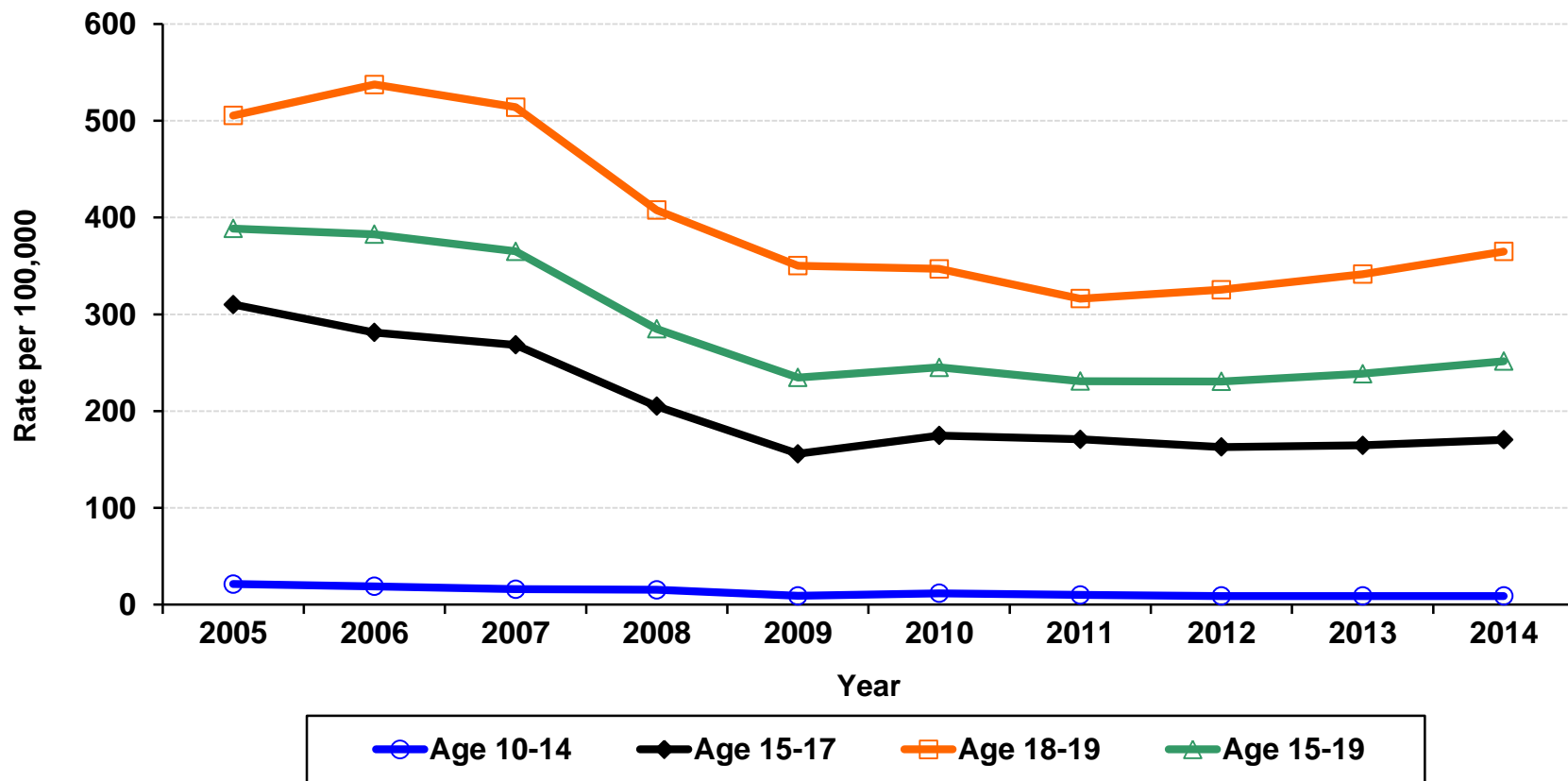
* Rate per 100,000 age- and gender-specific population

Data Sources: California Department of Public Health, STD Control Branch

Population: State of California, Department of Finance, *Race/Hispanics Population with Age and Gender Detail, 2000-2010*. Sacramento, California, September 2012; and State of California, Department of Finance, *Report P-3: State and County Population Projections by Race/Ethnicity, Detailed Age, and Gender, 2010-2060*. Sacramento, California, December 2014

Prepared by: California Department of Public Health, STD Control Branch, July 2016

Gonorrhea Rates for Adolescent Females by Age Group California, 2005–2014



Data Sources: California Department of Public Health, STD Control Branch

Population: State of California, Department of Finance, *Race/Hispanics Population with Age and Gender Detail, 2000-2010*. Sacramento, California, September 2012; and State of California, Department of Finance, *Report P-3: State and County Population Projections by Race/Ethnicity, Detailed Age, and Gender, 2010-2060*. Sacramento, California, December 2014

Prepared by: California Department of Public Health, STD Control Branch, July 2016

Gonorrhea Rates for Females Age 15-19 by Race/Ethnicity California, 2005–2014

| Gonorrhea Cases & Rates* by Race/Ethnicity, For Female California Residents Age 15-19, 2005–2014 | | | | | | | | | | |
|--|-------|---------|-------|---------|-------|---------|-------|---------|-------|---------|
| Race/Ethnicity | 2005 | | 2006 | | 2007 | | 2008 | | 2009 | |
| | Cases | Rate | Cases | Rate | Cases | Rate | Cases | Rate | Cases | Rate |
| White | 582 | 127.6 | 515 | 114.2 | 452 | 101.7 | 328 | 74.9 | 278 | 66.5 |
| African American/Black | 1,790 | 1,969.6 | 1,776 | 1,934.0 | 1,852 | 2,000.9 | 1,599 | 1,716.8 | 1,349 | 1,461.7 |
| Native American/Alaskan Native | 16 | 236.0 | 27 | 400.0 | 24 | 357.3 | 8 | 120.2 | 9 | 137.5 |
| Asian/Pacific Islander | 85 | 56.4 | 107 | 70.6 | 98 | 64.0 | 64 | 41.3 | 61 | 41.3 |
| Hispanic/Latino | 969 | 175.3 | 1,010 | 176.6 | 847 | 143.0 | 628 | 102.6 | 493 | 77.3 |

| Race/Ethnicity | 2010 | | 2011 | | 2012 | | 2013 | | 2014 | |
|--------------------------------|-------|---------|-------|---------|-------|---------|-------|---------|-------|---------|
| | Cases | Rate | Cases | Rate | Cases | Rate | Cases | Rate | Cases | Rate |
| White | 285 | 69.5 | 292 | 72.7 | 362 | 92.2 | 360 | 94.0 | 421 | 112.4 |
| African American/Black | 1,462 | 1,636.7 | 1,327 | 1,520.4 | 1,152 | 1,362.0 | 1,161 | 1,423.5 | 1,079 | 1,375.9 |
| Native American/Alaskan Native | 7 | 114.7 | 12 | 199.5 | 12 | 204.9 | 8 | 139.4 | 16 | 290.3 |
| Asian/Pacific Islander | 53 | 34.1 | 58 | 37.8 | 38 | 25.0 | 40 | 26.7 | 41 | 27.8 |
| Hispanic/Latino | 483 | 73.5 | 570 | 86.7 | 704 | 107.6 | 793 | 122.1 | 853 | 132.0 |

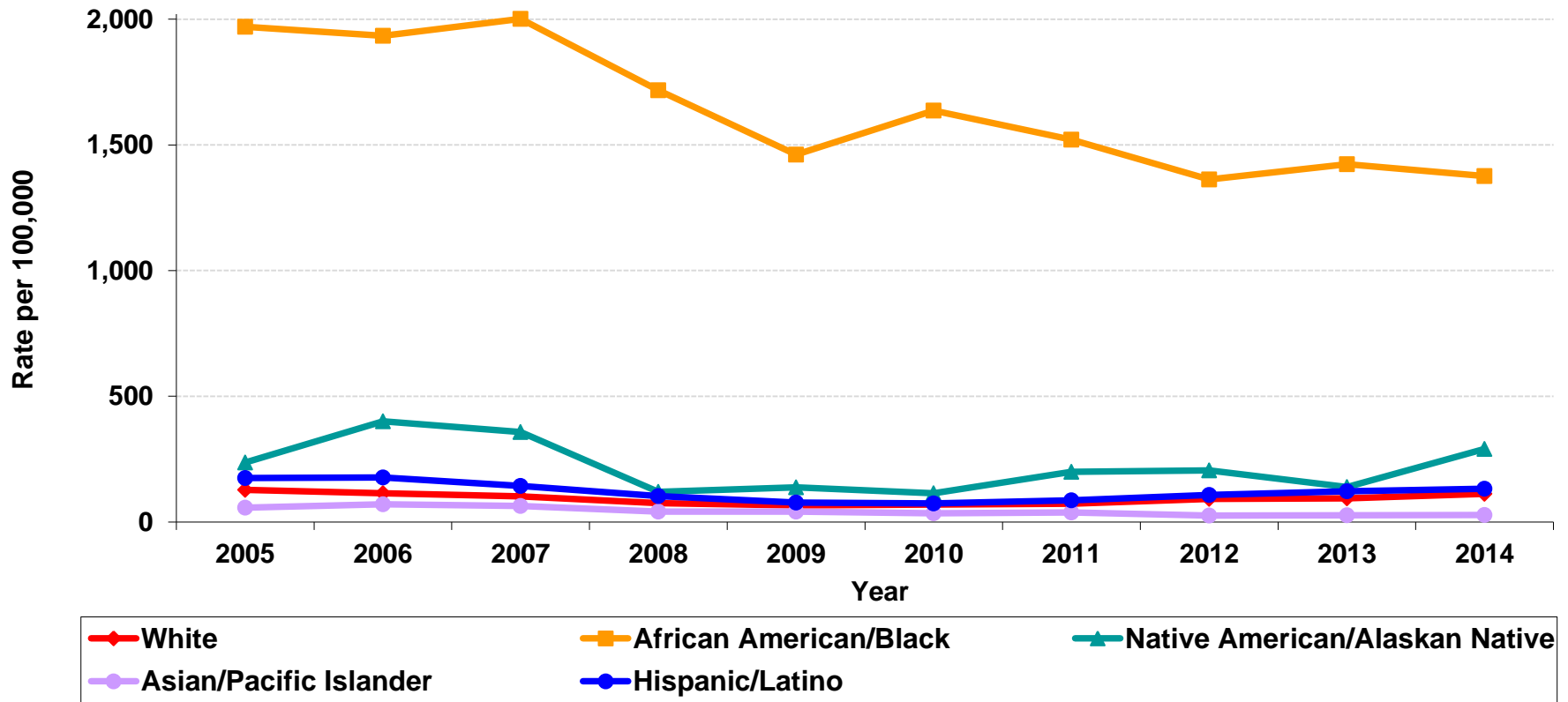
* Rate per 100,000 race-, age- and gender-specific population

Data Sources: California Department of Public Health, STD Control Branch

Population: State of California, Department of Finance, *Race/Hispanics Population with Age and Gender Detail, 2000-2010*. Sacramento, California, September 2012; and State of California, Department of Finance, *Report P-3: State and County Population Projections by Race/Ethnicity, Detailed Age, and Gender, 2010-2060*. Sacramento, California, December 2014

Prepared by: California Department of Public Health, STD Control Branch, July 2016

Gonorrhea Rates for Females Age 15-19 by Race/Ethnicity California, 2005–2014



Data Sources: California Department of Public Health, STD Control Branch

Population: State of California, Department of Finance, *Race/Hispanics Population with Age and Gender Detail, 2000-2010*. Sacramento, California, September 2012; and State of California, Department of Finance, *Report P-3: State and County Population Projections by Race/Ethnicity, Detailed Age, and Gender, 2010-2060*. Sacramento, California, December 2014

Prepared by: California Department of Public Health, STD Control Branch, July 2016

Gonorrhea Rates for Adolescent Males by Age Group California, 2005–2014

| Gonorrhea Cases & Rates* for Adolescent Males by Age Group California, 2005–2014 | | | | | | | | | | |
|--|-------|-------|-------|-------|-------|-------|-------|-------|-------|-------|
| Age Group | 2005 | | 2006 | | 2007 | | 2008 | | 2009 | |
| | Cases | Rate | Cases | Rate | Cases | Rate | Cases | Rate | Cases | Rate |
| 10-14 | 65 | 4.5 | 56 | 4.0 | 50 | 3.6 | 41 | 3.0 | 29 | 2.2 |
| 15-17 | 807 | 97.8 | 784 | 92.6 | 839 | 97.2 | 659 | 75.4 | 529 | 62.2 |
| 18-19 | 1,392 | 248.2 | 1,444 | 256.0 | 1,453 | 256.0 | 1,301 | 226.2 | 1,233 | 209.0 |
| 15-19 | 2,199 | 158.6 | 2,228 | 157.9 | 2,292 | 160.1 | 1,960 | 135.3 | 1,762 | 122.4 |

| Age Group | 2010 | | 2011 | | 2012 | | 2013 | | 2014 | |
|-----------|-------|-------|-------|-------|-------|-------|-------|-------|-------|-------|
| | Cases | Rate | Cases | Rate | Cases | Rate | Cases | Rate | Cases | Rate |
| 10-14 | 32 | 2.4 | 28 | 2.1 | 35 | 2.7 | 26 | 2.0 | 37 | 2.9 |
| 15-17 | 581 | 68.1 | 553 | 66.1 | 547 | 66.7 | 581 | 72.3 | 683 | 86.1 |
| 18-19 | 1,315 | 218.5 | 1,118 | 186.0 | 1,275 | 214.3 | 1,364 | 232.9 | 1,662 | 289.1 |
| 15-19 | 1,896 | 130.3 | 1,671 | 116.2 | 1,822 | 128.8 | 1,945 | 140.0 | 2,345 | 171.4 |

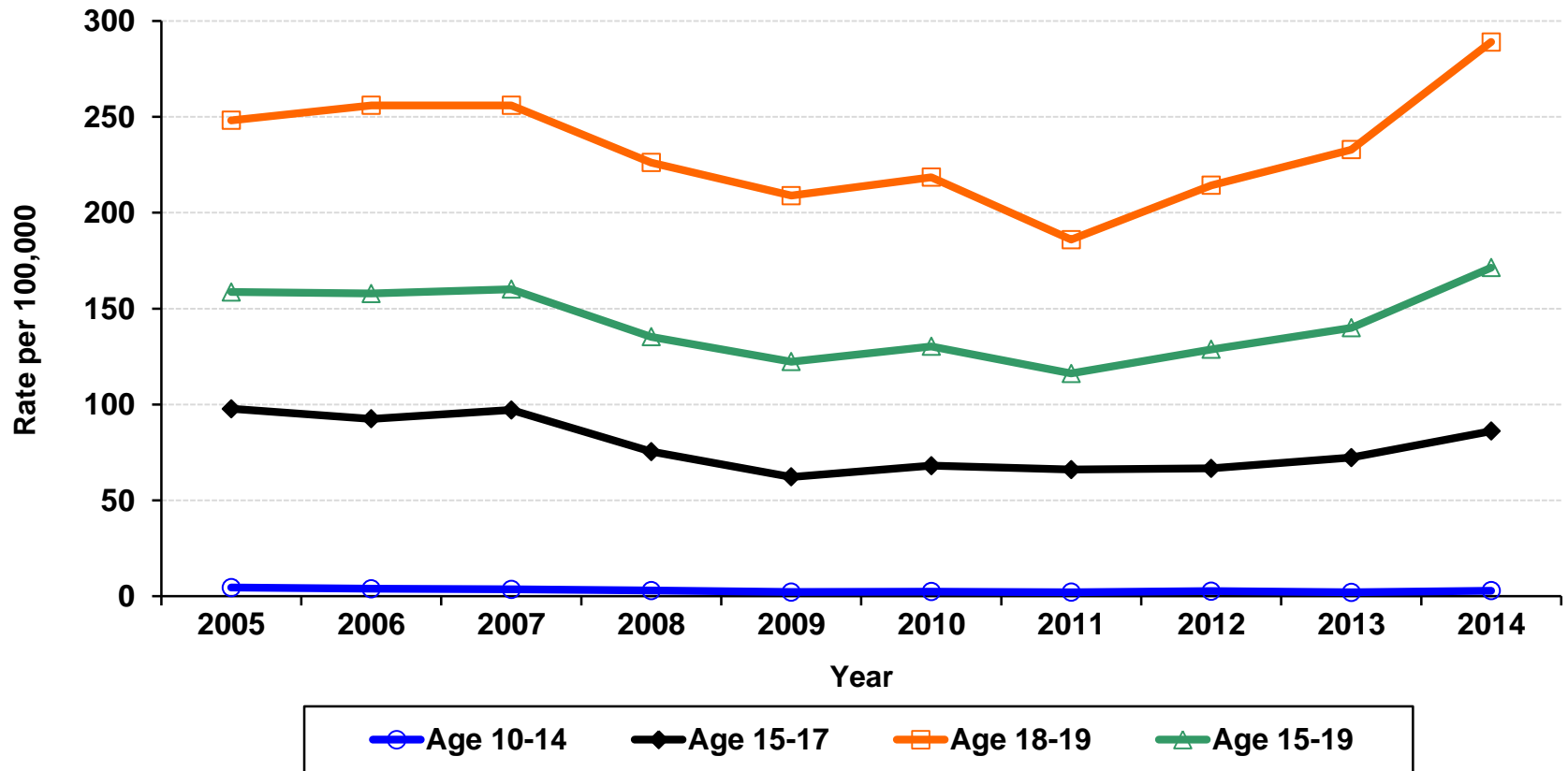
* Rate per 100,000 age- and gender-specific population

Data Sources: California Department of Public Health, STD Control Branch

Population: State of California, Department of Finance, *Race/Hispanics Population with Age and Gender Detail, 2000-2010*. Sacramento, California, September 2012; and State of California, Department of Finance, *Report P-3: State and County Population Projections by Race/Ethnicity, Detailed Age, and Gender, 2010-2060*. Sacramento, California, December 2014

Prepared by: California Department of Public Health, STD Control Branch, July 2016

Gonorrhea Rates for Adolescent Males by Age Group California, 2005–2014



Data Sources: California Department of Public Health, STD Control Branch

Population: State of California, Department of Finance, *Race/Hispanics Population with Age and Gender Detail, 2000-2010*. Sacramento, California, September 2012; and State of California, Department of Finance, *Report P-3: State and County Population Projections by Race/Ethnicity, Detailed Age, and Gender, 2010-2060*. Sacramento, California, December 2014

Prepared by: California Department of Public Health, STD Control Branch, July 2016

Gonorrhea Rates for Males Age 15-19 by Race/Ethnicity California, 2005–2014

Gonorrhea Cases & Rates* by Race/Ethnicity, For Male California Residents Age 15-19, 2005–2014

| Race/Ethnicity | 2005 | | 2006 | | 2007 | | 2008 | | 2009 | |
|--------------------------------|-------|-------|-------|-------|-------|-------|-------|-------|-------|-------|
| | Cases | Rate | Cases | Rate | Cases | Rate | Cases | Rate | Cases | Rate |
| White | 198 | 40.7 | 149 | 30.8 | 161 | 33.6 | 129 | 27.4 | 126 | 28.1 |
| African American/Black | 909 | 969.1 | 890 | 932.5 | 924 | 955.1 | 832 | 850.2 | 779 | 801.9 |
| Native American/Alaskan Native | 4 | 55.8 | 6 | 83.5 | 11 | 152.9 | 5 | 69.0 | 0 | 0.0 |
| Asian/Pacific Islander | 26 | 16.3 | 32 | 19.8 | 26 | 15.8 | 24 | 14.4 | 22 | 13.7 |
| Hispanic/Latino | 437 | 72.7 | 447 | 71.8 | 464 | 72.1 | 309 | 46.6 | 291 | 42.7 |

| Race/Ethnicity | 2010 | | 2011 | | 2012 | | 2013 | | 2014 | |
|--------------------------------|-------|-------|-------|-------|-------|-------|-------|-------|-------|-------|
| | Cases | Rate | Cases | Rate | Cases | Rate | Cases | Rate | Cases | Rate |
| White | 130 | 29.4 | 149 | 34.5 | 191 | 45.4 | 186 | 45.5 | 246 | 61.8 |
| African American/Black | 819 | 861.3 | 621 | 670.7 | 613 | 687.4 | 617 | 719.7 | 732 | 885.5 |
| Native American/Alaskan Native | 4 | 62.1 | 2 | 31.5 | 4 | 65.2 | 2 | 33.3 | 12 | 202.6 |
| Asian/Pacific Islander | 33 | 20.0 | 28 | 17.1 | 40 | 24.7 | 32 | 20.0 | 45 | 28.6 |
| Hispanic/Latino | 341 | 49.0 | 373 | 53.8 | 501 | 73.1 | 565 | 83.4 | 652 | 97.0 |

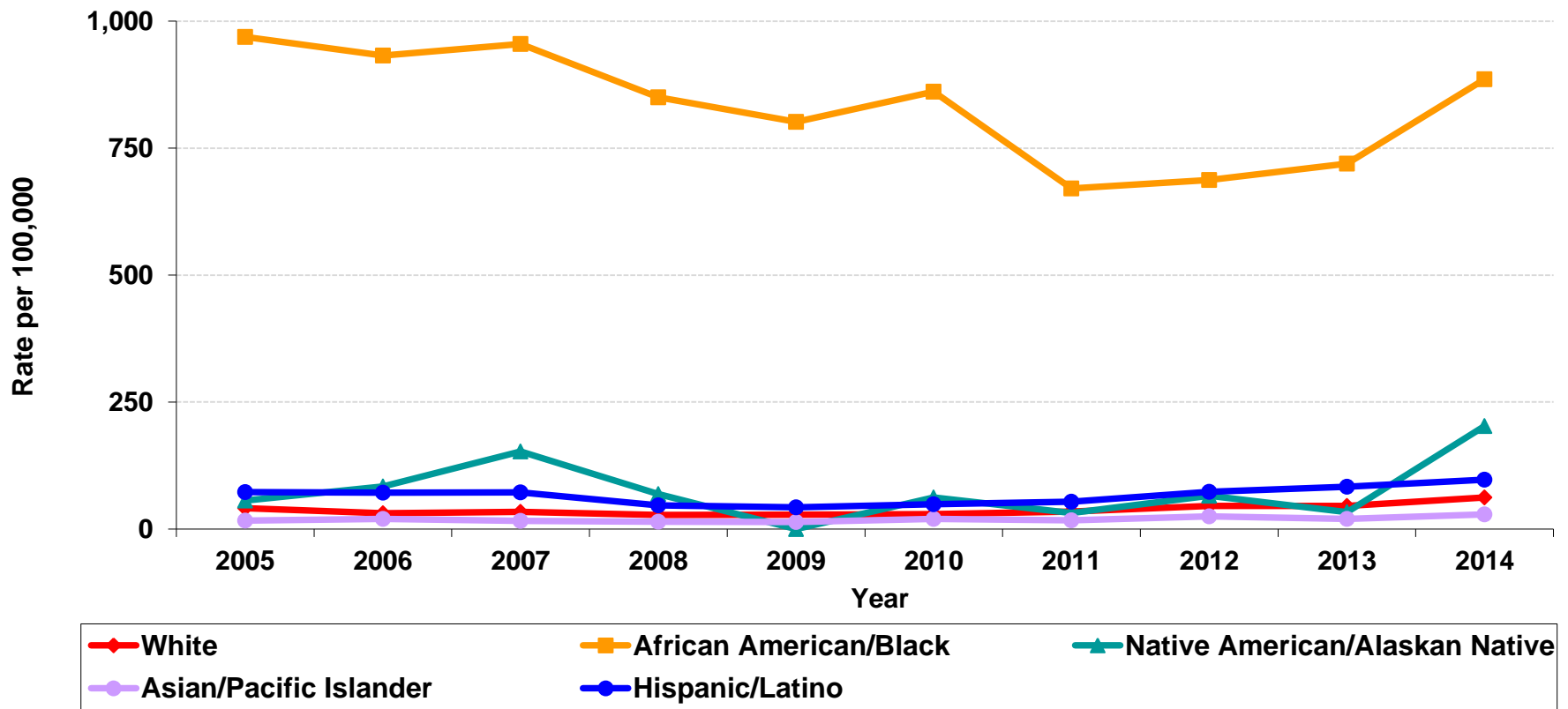
* Rate per 100,000 race-, age- and gender-specific population

Data Sources: California Department of Public Health, STD Control Branch

Population: State of California, Department of Finance, *Race/Hispanics Population with Age and Gender Detail, 2000-2010*. Sacramento, California, September 2012; and State of California, Department of Finance, *Report P-3: State and County Population Projections by Race/Ethnicity, Detailed Age, and Gender, 2010-2060*. Sacramento, California, December 2014

Prepared by: California Department of Public Health, STD Control Branch, July 2016

Gonorrhea Rates for Males Age 15-19 by Race/Ethnicity California, 2005–2014



Data Sources: California Department of Public Health, STD Control Branch
 Population: State of California, Department of Finance, *Race/Hispanics Population with Age and Gender Detail, 2000-2010*. Sacramento, California, September 2012; and State of California, Department of Finance, *Report P-3: State and County Population Projections by Race/Ethnicity, Detailed Age, and Gender, 2010-2060*. Sacramento, California, December 2014
 Prepared by: California Department of Public Health, STD Control Branch, July 2016

Early Syphilis Rates[†] for Adolescent Females by Age Group California, 2005–2014

| Early Syphilis Cases & Rates* for Adolescent Females by Age Group California, 2005–2014 | | | | | | | | | | |
|---|-------|------|-------|------|-------|------|-------|------|-------|------|
| Age Group | 2005 | | 2006 | | 2007 | | 2008 | | 2009 | |
| | Cases | Rate | Cases | Rate | Cases | Rate | Cases | Rate | Cases | Rate |
| 10-14 | 0 | 0.0 | 2 | 0.1 | 0 | 0.0 | 0 | 0.0 | 0 | 0.0 |
| 15-17 | 11 | 1.4 | 12 | 1.5 | 9 | 1.1 | 9 | 1.1 | 7 | 0.9 |
| 18-19 | 21 | 4.0 | 16 | 3.1 | 25 | 4.8 | 28 | 5.3 | 16 | 2.9 |
| 15-19 | 32 | 2.5 | 28 | 2.1 | 34 | 2.6 | 37 | 2.7 | 23 | 1.7 |

| Age Group | 2010 | | 2011 | | 2012 | | 2013 | | 2014 | |
|-----------|-------|------|-------|------|-------|------|-------|------|-------|------|
| | Cases | Rate | Cases | Rate | Cases | Rate | Cases | Rate | Cases | Rate |
| 10-14 | 1 | 0.1 | 1 | 0.1 | 1 | 0.1 | 2 | 0.2 | 2 | 0.2 |
| 15-17 | 11 | 1.4 | 15 | 1.9 | 10 | 1.3 | 15 | 2.0 | 19 | 2.5 |
| 18-19 | 20 | 3.6 | 17 | 3.0 | 13 | 2.3 | 22 | 4.0 | 44 | 8.1 |
| 15-19 | 31 | 2.3 | 32 | 2.4 | 23 | 1.7 | 37 | 2.8 | 63 | 4.8 |

* Rate per 100,000 age- and gender-specific population.

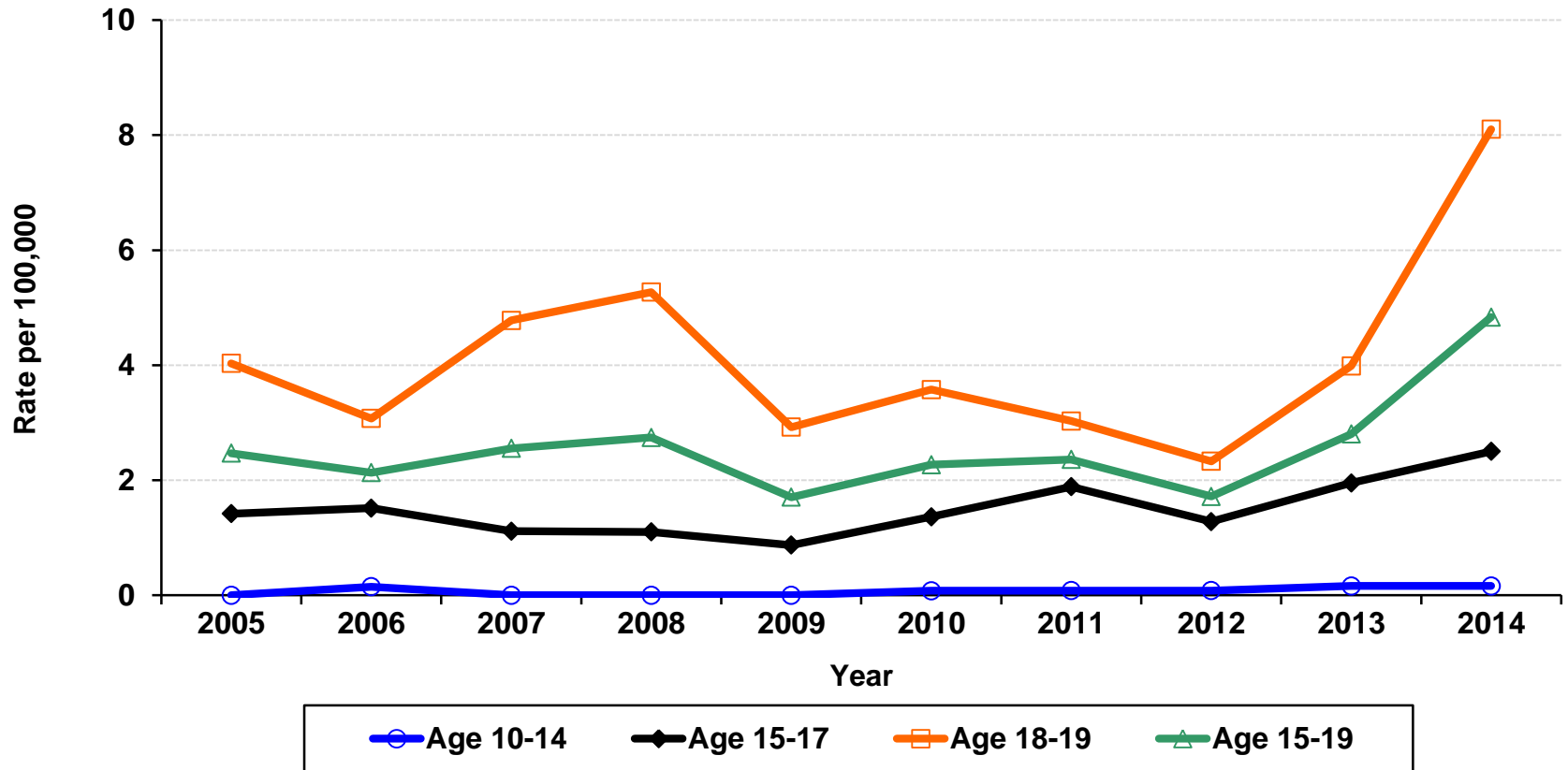
† Early syphilis includes primary, secondary and early latent stages.

Data Sources: California Department of Public Health, STD Control Branch

Population: State of California, Department of Finance, *Race/Hispanics Population with Age and Gender Detail, 2000-2010*. Sacramento, California, September 2012; and State of California, Department of Finance, *Report P-3: State and County Population Projections by Race/Ethnicity, Detailed Age, and Gender, 2010-2060*. Sacramento, California, December 2014

Prepared by: California Department of Public Health, STD Control Branch, July 2016

Early Syphilis Rates† for Adolescent Females by Age Group California, 2005–2014



† Early syphilis includes primary, secondary and early latent stages.

Data Sources: California Department of Public Health, STD Control Branch

Population: State of California, Department of Finance, *Race/Hispanics Population with Age and Gender Detail, 2000-2010*. Sacramento, California, September 2012; and State of California, Department of Finance, *Report P-3: State and County Population Projections by Race/Ethnicity, Detailed Age, and Gender, 2010-2060*. Sacramento, California, December 2014

Prepared by: California Department of Public Health, STD Control Branch, July 2016

Early Syphilis Rates[†] for Females Age 15-19 by Race/Ethnicity California, 2005–2014

Early Syphilis Cases & Rates* by Race/Ethnicity, For Female California Residents Age 15-19, 2005–2014

| Race/Ethnicity | 2005 | | 2006 | | 2007 | | 2008 | | 2009 | |
|--------------------------------|-------|------|-------|------|-------|------|-------|------|-------|------|
| | Cases | Rate | Cases | Rate | Cases | Rate | Cases | Rate | Cases | Rate |
| White | 2 | 0.4 | 1 | 0.2 | 3 | 0.7 | 5 | 1.1 | 2 | 0.5 |
| African American/Black | 8 | 8.8 | 9 | 9.8 | 2 | 2.2 | 11 | 11.8 | 11 | 11.9 |
| Native American/Alaskan Native | 0 | 0.0 | 0 | 0.0 | 0 | 0.0 | 0 | 0.0 | 0 | 0.0 |
| Asian/Pacific Islander | 1 | 0.7 | 1 | 0.7 | 0 | 0.0 | 1 | 0.6 | 0 | 0.0 |
| Hispanic/Latino | 20 | 3.6 | 17 | 3.0 | 27 | 4.6 | 20 | 3.3 | 10 | 1.6 |

| Race/Ethnicity | 2010 | | 2011 | | 2012 | | 2013 | | 2014 | |
|--------------------------------|-------|------|-------|------|-------|------|-------|------|-------|------|
| | Cases | Rate | Cases | Rate | Cases | Rate | Cases | Rate | Cases | Rate |
| White | 4 | 1.0 | 8 | 2.0 | 2 | 0.5 | 4 | 1.0 | 9 | 2.4 |
| African American/Black | 19 | 21.3 | 14 | 16.0 | 9 | 10.6 | 15 | 18.4 | 18 | 23.0 |
| Native American/Alaskan Native | 0 | 0.0 | 1 | 16.6 | 0 | 0.0 | 0 | 0.0 | 0 | 0.0 |
| Asian/Pacific Islander | 2 | 1.3 | 1 | 0.7 | 1 | 0.7 | 0 | 0.0 | 0 | 0.0 |
| Hispanic/Latino | 6 | 0.9 | 7 | 1.1 | 10 | 1.5 | 18 | 2.8 | 34 | 5.3 |

* Rate per 100,000 race-, age- and gender-specific population.

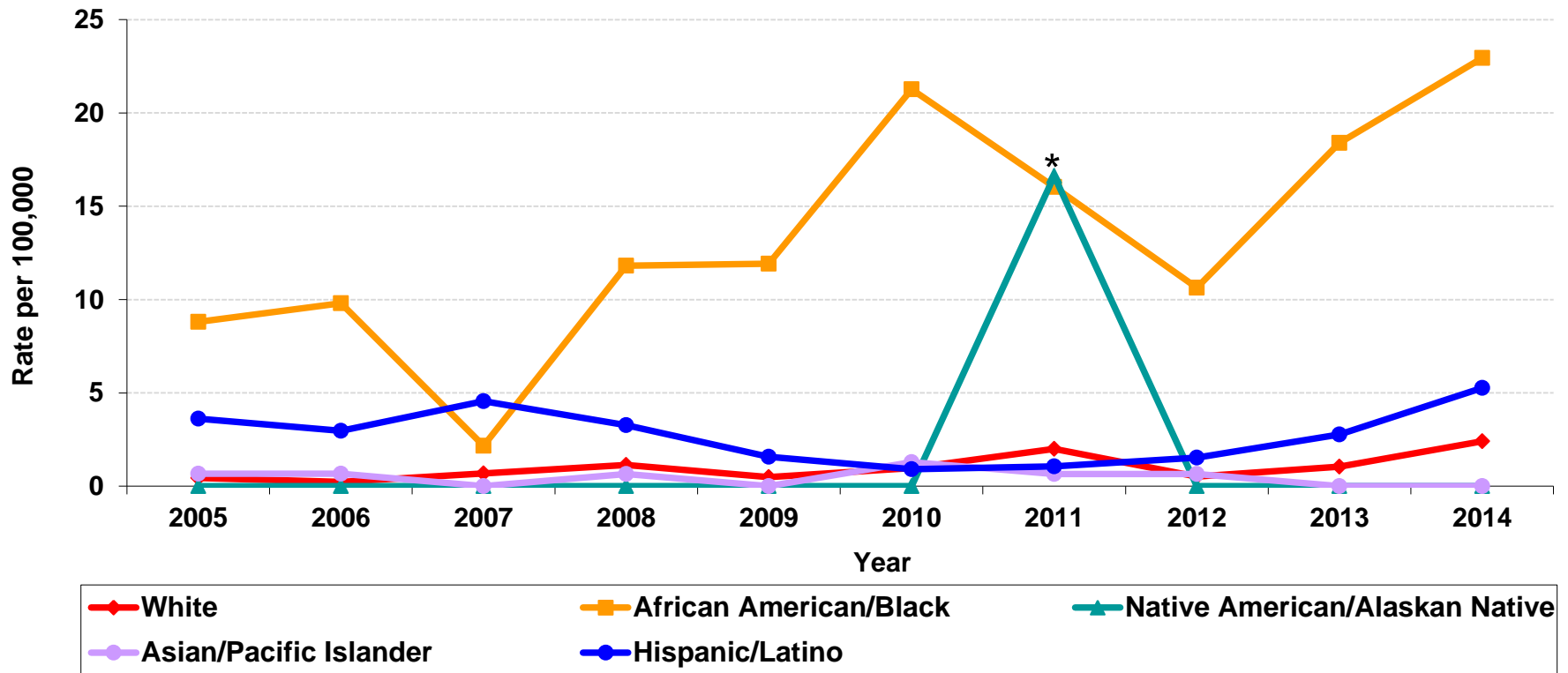
† Early syphilis includes primary, secondary and early latent stages.

Data Sources: California Department of Public Health, STD Control Branch

Population: State of California, Department of Finance, *Race/Hispanics Population with Age and Gender Detail, 2000-2010*. Sacramento, California, September 2012; and State of California, Department of Finance, *Report P-3: State and County Population Projections by Race/Ethnicity, Detailed Age, and Gender, 2010-2060*. Sacramento, California, December 2014

Prepared by: California Department of Public Health, STD Control Branch, July 2016

Early Syphilis Rates[†] for Females Age 15-19 by Race/Ethnicity California, 2005–2014



* Trends should be interpreted with caution when there are very low case counts as noted in the companion table by race/ethnicity; similarly, changes in population counts due to the 2010 census, especially for relatively small race/ethnicity groups, may also result in unstable rate changes. The increase in the rate for this NA/AN age group is based on 1 case reported in 2011 compared to 0 in other years.

† Early syphilis includes primary, secondary and early latent stages.

Data Sources: California Department of Public Health, STD Control Branch

Population: State of California, Department of Finance, *Race/Hispanics Population with Age and Gender Detail, 2000-2010*. Sacramento, California, September 2012; and State of California, Department of Finance, *Report P-3: State and County Population Projections by Race/Ethnicity, Detailed Age, and Gender, 2010-2060*. Sacramento, California, December 2014

Prepared by: California Department of Public Health, STD Control Branch, July 2016

Early Syphilis Rates[†] for Adolescent Males by Age Group California, 2005–2014

| Early Syphilis Cases & Rates* for Adolescent Males by Age Group California, 2005–2014 | | | | | | | | | | |
|---|-------|------|-------|------|-------|------|-------|------|-------|------|
| Age Group | 2005 | | 2006 | | 2007 | | 2008 | | 2009 | |
| | Cases | Rate | Cases | Rate | Cases | Rate | Cases | Rate | Cases | Rate |
| 10-14 | 0 | 0.0 | 1 | 0.1 | 1 | 0.1 | 1 | 0.1 | 1 | 0.1 |
| 15-17 | 10 | 1.2 | 18 | 2.1 | 18 | 2.1 | 21 | 2.4 | 19 | 2.2 |
| 18-19 | 22 | 3.9 | 40 | 7.1 | 69 | 12.2 | 73 | 12.7 | 80 | 13.6 |
| 15-19 | 32 | 2.3 | 58 | 4.1 | 87 | 6.1 | 94 | 6.5 | 99 | 6.9 |

| Age Group | 2010 | | 2011 | | 2012 | | 2013 | | 2014 | |
|-----------|-------|------|-------|------|-------|------|-------|------|-------|------|
| | Cases | Rate | Cases | Rate | Cases | Rate | Cases | Rate | Cases | Rate |
| 10-14 | 2 | 0.2 | 1 | 0.1 | 0 | 0.0 | 3 | 0.2 | 1 | 0.1 |
| 15-17 | 15 | 1.8 | 27 | 3.2 | 25 | 3.0 | 35 | 4.4 | 41 | 5.2 |
| 18-19 | 88 | 14.6 | 94 | 15.6 | 107 | 18.0 | 142 | 24.2 | 128 | 22.3 |
| 15-19 | 103 | 7.1 | 121 | 8.4 | 132 | 9.3 | 177 | 12.7 | 169 | 12.4 |

* Rate per 100,000 age- and gender-specific population.

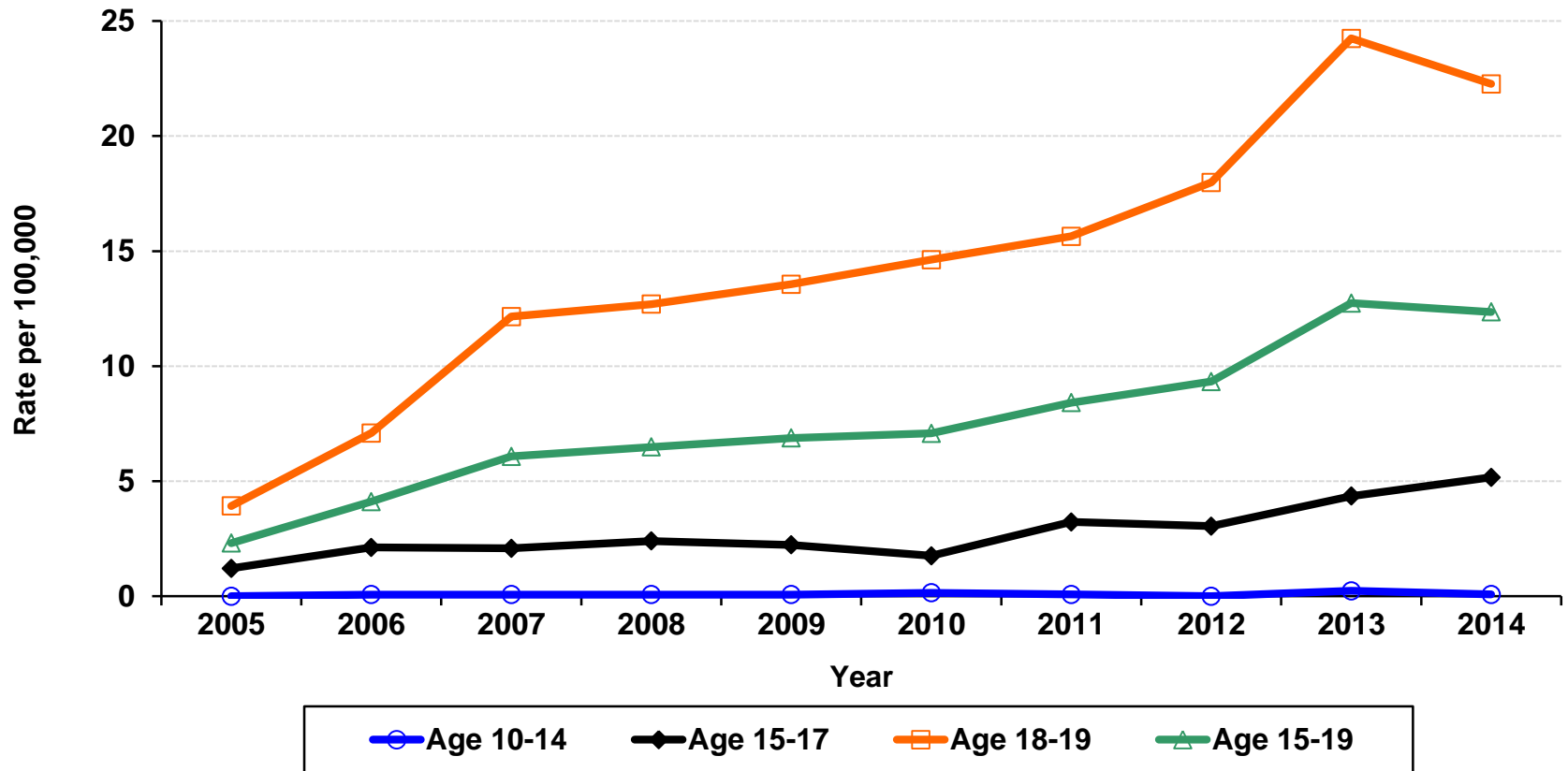
† Early syphilis includes primary, secondary and early latent stages.

Data Sources: California Department of Public Health, STD Control Branch

Population: State of California, Department of Finance, *Race/Hispanics Population with Age and Gender Detail, 2000-2010*. Sacramento, California, September 2012; and State of California, Department of Finance, *Report P-3: State and County Population Projections by Race/Ethnicity, Detailed Age, and Gender, 2010-2060*. Sacramento, California, December 2014

Prepared by: California Department of Public Health, STD Control Branch, July 2016

Early Syphilis Rates[†] for Adolescent Males by Age Group California, 2005–2014



[†] Early syphilis includes primary, secondary and early latent stages.

Data Sources: California Department of Public Health, STD Control Branch

Population: State of California, Department of Finance, *Race/Hispanics Population with Age and Gender Detail, 2000-2010*. Sacramento, California, September 2012; and State of California, Department of Finance, *Report P-3: State and County Population Projections by Race/Ethnicity, Detailed Age, and Gender, 2010-2060*. Sacramento, California, December 2014

Prepared by: California Department of Public Health, STD Control Branch, July 2016

Early Syphilis Rates[†] for Males Age 15-19 by Race/Ethnicity California, 2005–2014

Early Syphilis Cases & Rates* by Race/Ethnicity, For Male California Residents Age 15-19, 2005–2014

| Race/Ethnicity | 2005 | | 2006 | | 2007 | | 2008 | | 2009 | |
|--------------------------------|-------|------|-------|------|-------|------|-------|------|-------|------|
| | Cases | Rate | Cases | Rate | Cases | Rate | Cases | Rate | Cases | Rate |
| White | 11 | 2.3 | 9 | 1.9 | 14 | 2.9 | 9 | 1.9 | 15 | 3.3 |
| African American/Black | 9 | 9.6 | 19 | 19.9 | 25 | 25.8 | 28 | 28.6 | 18 | 18.5 |
| Native American/Alaskan Native | 0 | 0.0 | 0 | 0.0 | 1 | 13.9 | 0 | 0.0 | 0 | 0.0 |
| Asian/Pacific Islander | 0 | 0.0 | 3 | 1.9 | 2 | 1.2 | 3 | 1.8 | 7 | 4.4 |
| Hispanic/Latino | 12 | 2.0 | 25 | 4.0 | 43 | 6.7 | 54 | 8.2 | 59 | 8.7 |

| Race/Ethnicity | 2010 | | 2011 | | 2012 | | 2013 | | 2014 | |
|--------------------------------|-------|------|-------|------|-------|------|-------|------|-------|------|
| | Cases | Rate | Cases | Rate | Cases | Rate | Cases | Rate | Cases | Rate |
| White | 16 | 3.6 | 17 | 3.9 | 36 | 8.6 | 22 | 5.4 | 18 | 4.5 |
| African American/Black | 26 | 27.3 | 32 | 34.6 | 28 | 31.4 | 36 | 42.0 | 21 | 25.4 |
| Native American/Alaskan Native | 1 | 15.5 | 2 | 31.5 | 0 | 0.0 | 0 | 0.0 | 1 | 16.9 |
| Asian/Pacific Islander | 5 | 3.0 | 4 | 2.4 | 5 | 3.1 | 8 | 5.0 | 6 | 3.8 |
| Hispanic/Latino | 51 | 7.3 | 61 | 8.8 | 60 | 8.8 | 98 | 14.5 | 112 | 16.7 |

* Rate per 100,000 race-, age- and gender-specific population.

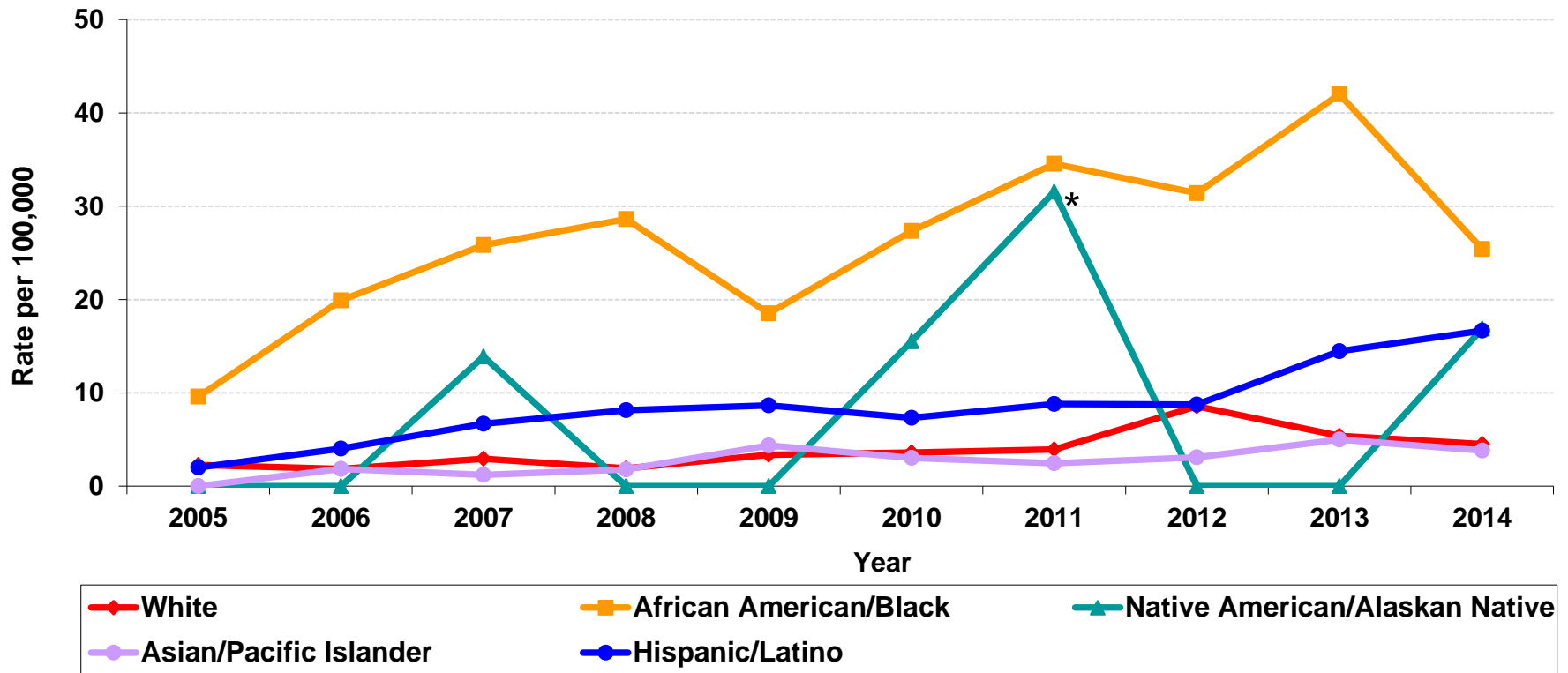
† Early syphilis includes primary, secondary and early latent stages.

Data Sources: California Department of Public Health, STD Control Branch

Population: State of California, Department of Finance, *Race/Hispanics Population with Age and Gender Detail, 2000-2010*. Sacramento, California, September 2012; and State of California, Department of Finance, *Report P-3: State and County Population Projections by Race/Ethnicity, Detailed Age, and Gender, 2010-2060*. Sacramento, California, December 2014

Prepared by: California Department of Public Health, STD Control Branch, July 2016

Early Syphilis Rates[†] for Males Age 15-19 by Race/Ethnicity California, 2005–2014



* Trends should be interpreted with caution when there are very low case counts as noted in the companion table by race/ethnicity; similarly, changes in population counts due to the 2010 census, especially for relatively small race/ethnicity groups, may also result in unstable rate changes.

† Early syphilis includes primary, secondary and early latent stages.

Data Sources: California Department of Public Health, STD Control Branch

Population: State of California, Department of Finance, *Race/Hispanics Population with Age and Gender Detail, 2000-2010*. Sacramento, California, September 2012; and State of California, Department of Finance, *Report P-3: State and County Population Projections by Race/Ethnicity, Detailed Age, and Gender, 2010-2060*. Sacramento, California, December 2014

Prepared by: California Department of Public Health, STD Control Branch, July 2016

Chlamydia Prevalence Monitoring for Adolescent Females by Age Group California, 2005–2014[†]

| Chlamydia Prevalence Monitoring – Family Planning Clinics, Percent Positive for Adolescent Females by Age Group California, 2005–2014 | | | | | | | | | | |
|--|-------------|-------------|-------------|-------------|-------------|-------------|-------------|-------------|-------------|-------------|
| Age Group | 2005 | 2006 | 2007 | 2008 | 2009 | 2010 | 2011 | 2012 | 2013 | 2014 |
| 10-14 | 5.4 | 9.5 | 4.9 | 6.3 | 10.0 | 3.8 | 4.0 | 3.5 | 5.1 | 4.6 |
| 15-17 | 7.5 | 8.9 | 6.8 | 8.1 | 9.0 | 4.4 | 5.2 | 5.2 | 4.3 | 4.9 |
| 18-19 | 7.5 | 7.6 | 7.6 | 8.8 | 10.2 | 5.2 | 6.0 | 5.8 | 5.9 | 6.2 |
| 15-19 | 7.5 | 8.1 | 7.3 | 8.5 | 9.8 | 4.9 | 5.7 | 5.6 | 5.3 | 5.7 |

| Chlamydia Prevalence Monitoring – STD Clinics, Percent Positive for Adolescent Females by Age Group California, 2004–2013 | | | | | | | | | | |
|--|-------------|-------------|-------------|-------------|-------------|-------------|-------------|-------------|-------------|-------------|
| Age Group | 2004 | 2005 | 2006 | 2007 | 2008 | 2009 | 2010 | 2011 | 2012 | 2013 |
| 10-14* | 20.0 | 16.7 | 28.6 | 12.5 | 33.3 | 50.0 | 0.0 | 0.0 | 25.0 | 0.0 |
| 15-17* | 15.7 | 20.0 | 20.9 | 20.2 | 20.0 | 5.4 | 16.0 | 19.2 | 0.0 | 18.8 |
| 18-19 | 20.8 | 19.0 | 19.2 | 17.6 | 12.1 | 20.0 | 13.3 | 12.9 | 17.5 | 18.4 |
| 15-19 | 18.3 | 19.5 | 20.0 | 18.8 | 14.5 | 16.1 | 14.0 | 14.8 | 14.9 | 18.5 |

* STD clinic trends for ages 10-14 and 15-17 should be interpreted with caution as the number tested was very low.

† STD clinic data not available after 2013.

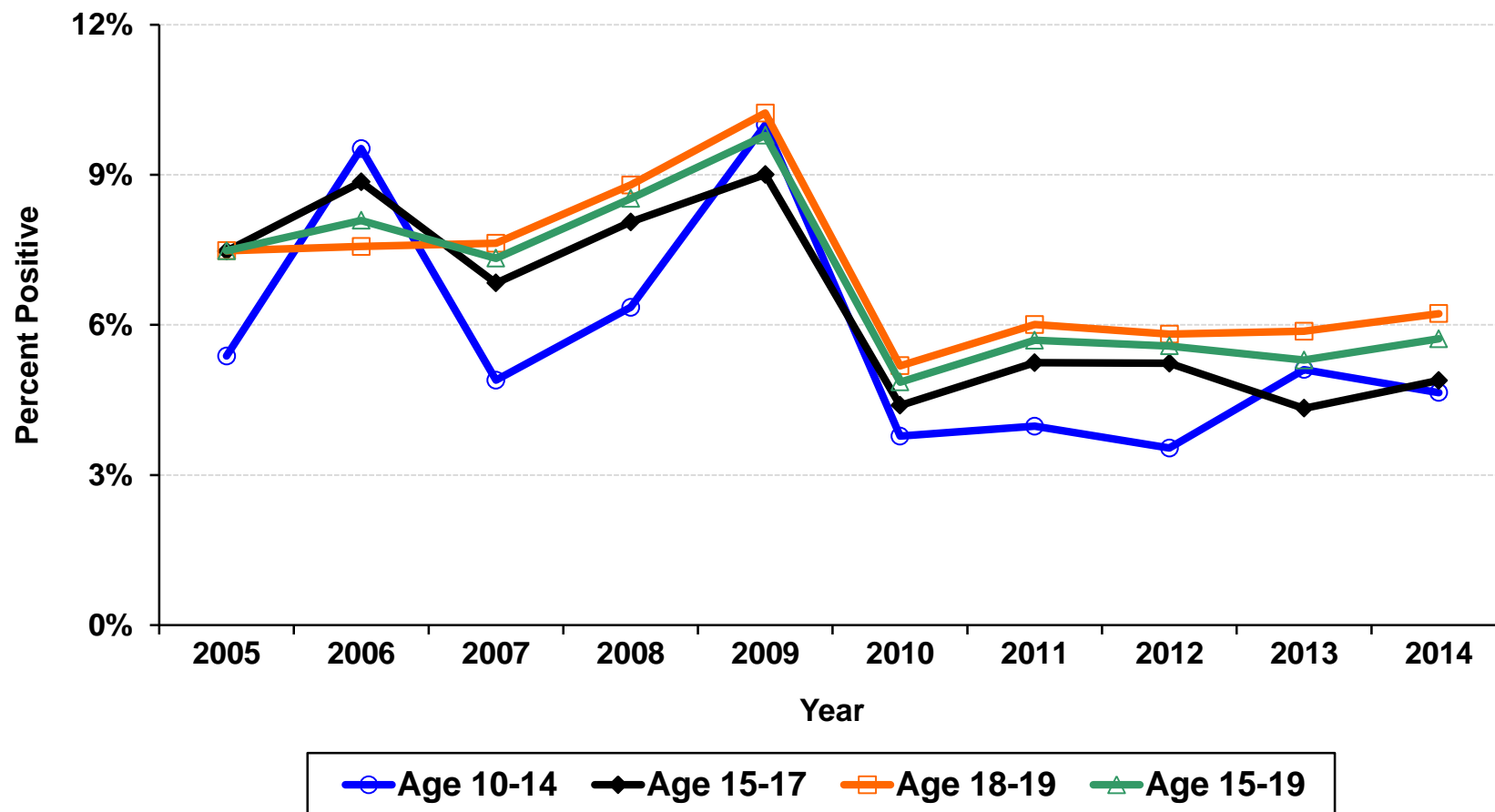
Data Source: California Department of Public Health, STD Control Branch

Prepared by: California Department of Public Health, STD Control Branch, July 2016

Chlamydia Prevalence Monitoring – Family Planning Clinics

Percent Positive for Adolescent Females by Age Group

California, 2005–2014

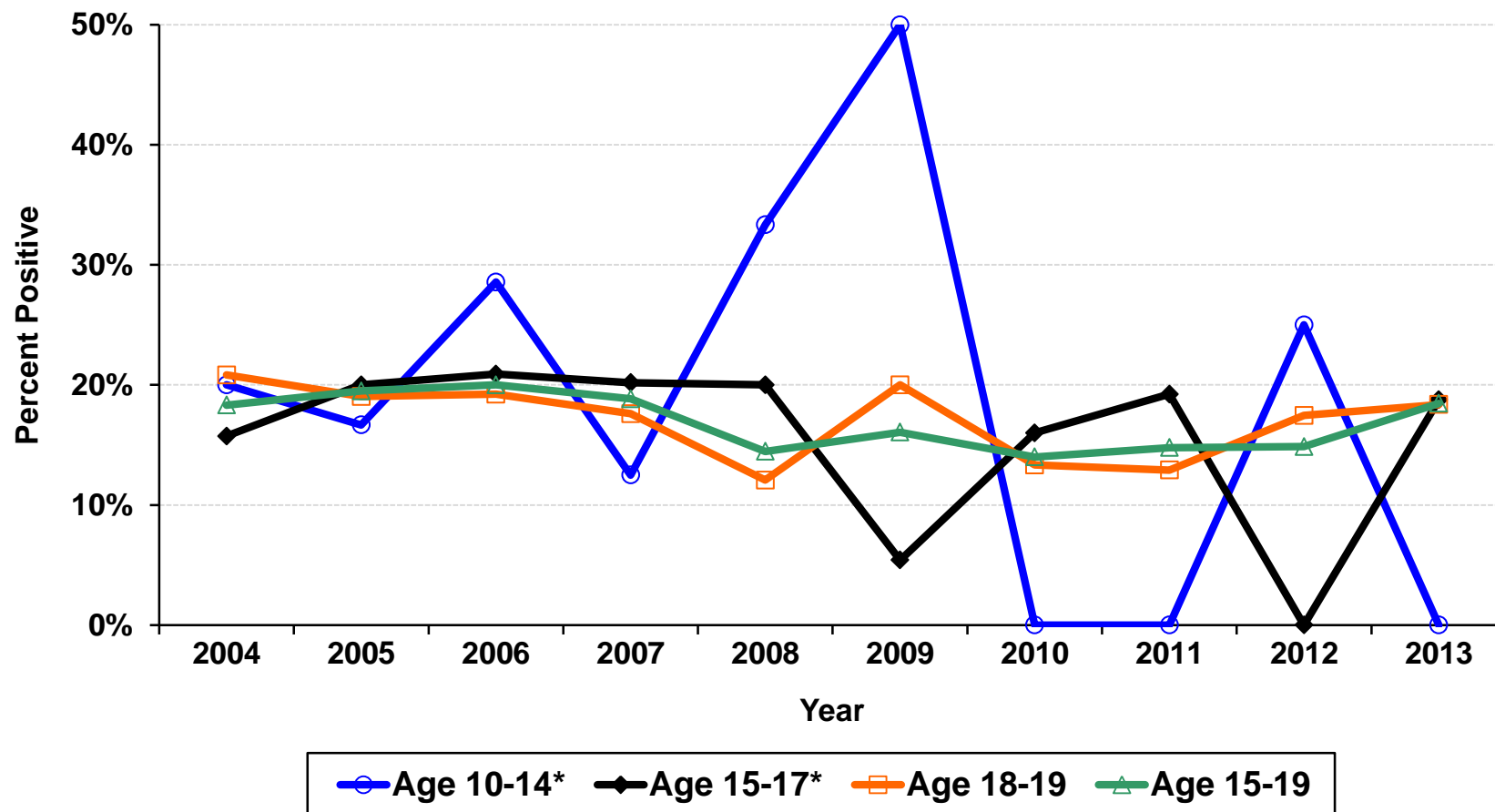


Data Source: California Department of Public Health, STD Control Branch
 Prepared by: California Department of Public Health, STD Control Branch, July 2016

Chlamydia Prevalence Monitoring – STD Clinics

Percent Positive for Adolescent Females by Age Group

California, 2004–2013[†]



* STD clinic trends for ages 10-14 and 15-17 should be interpreted with caution as the number tested was very low

† Data not available after 2013.

Data Source: California Department of Public Health, STD Control Branch

Prepared by: California Department of Public Health, STD Control Branch, July 2016

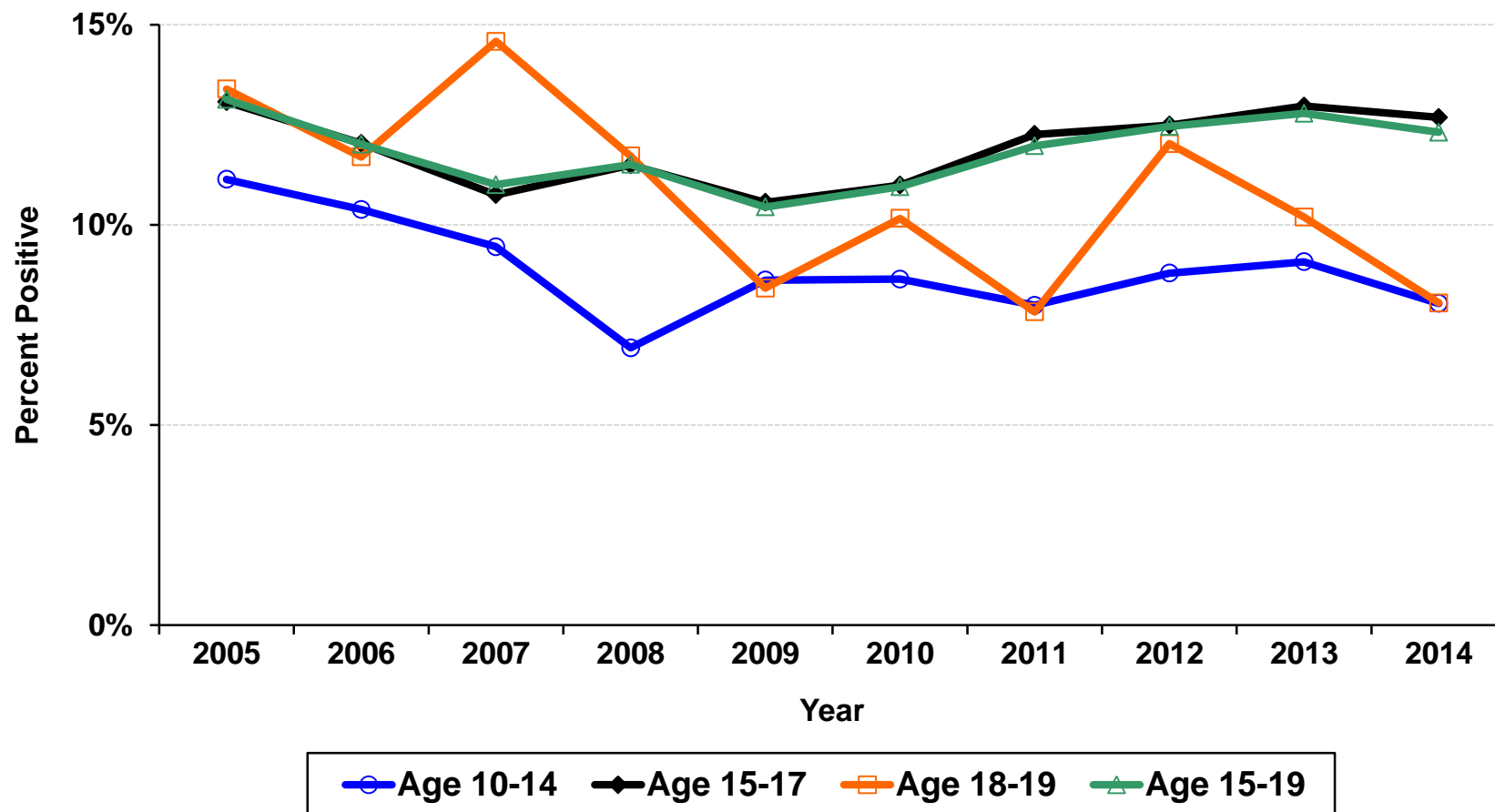
Chlamydia Prevalence Monitoring for Adolescent Females by Age Group California, 2005–2014

| Chlamydia Prevalence Monitoring – Juvenile Detention, Percent Positive for Adolescent Females by Age Group California, 2005–2014 | | | | | | | | | | |
|---|-------------|-------------|-------------|-------------|-------------|-------------|-------------|-------------|-------------|-------------|
| Age Group | 2005 | 2006 | 2007 | 2008 | 2009 | 2010 | 2011 | 2012 | 2013 | 2014 |
| 10-14 | 11.1 | 10.4 | 9.5 | 6.9 | 8.6 | 8.6 | 8.0 | 8.8 | 9.1 | 8.0 |
| 15-17 | 13.1 | 12.0 | 10.8 | 11.5 | 10.6 | 11.0 | 12.3 | 12.5 | 13.0 | 12.7 |
| 18-19 | 13.4 | 11.7 | 14.6 | 11.7 | 8.4 | 10.2 | 7.8 | 12.0 | 10.2 | 8.0 |
| 15-19 | 13.1 | 12.0 | 11.0 | 11.5 | 10.4 | 11.0 | 12.0 | 12.5 | 12.8 | 12.3 |

| Chlamydia Prevalence Monitoring – Northern CAMCO, Percent Positive for Adolescent Females by Age Group California, 2005–2014 | | | | | | | | | | |
|---|-------------|-------------|-------------|-------------|-------------|-------------|-------------|-------------|-------------|-------------|
| Age Group | 2005 | 2006 | 2007 | 2008 | 2009 | 2010 | 2011 | 2012 | 2013 | 2014 |
| 10-14 | 3.5 | 4.5 | 4.6 | 5.1 | 3.7 | 2.6 | 2.5 | 1.8 | 2.2 | 1.7 |
| 15-17 | 4.4 | 5.3 | 5.4 | 5.3 | 5.2 | 5.0 | 4.6 | 4.4 | 4.0 | 3.6 |
| 18-19 | 4.6 | 6.9 | 6.8 | 6.9 | 7.1 | 7.3 | 7.0 | 7.0 | 6.5 | 6.4 |
| 15-19 | 4.5 | 6.1 | 6.1 | 6.1 | 6.1 | 6.0 | 5.7 | 5.6 | 5.2 | 4.9 |

Data Sources: California Department of Public Health, STD Control Branch; Northern California Managed Care Organization (MCO)
Prepared by: California Department of Public Health, STD Control Branch, July 2016

Chlamydia Prevalence Monitoring – Juvenile Detention Percent Positive for Adolescent Females by Age Group California, 2005–2014

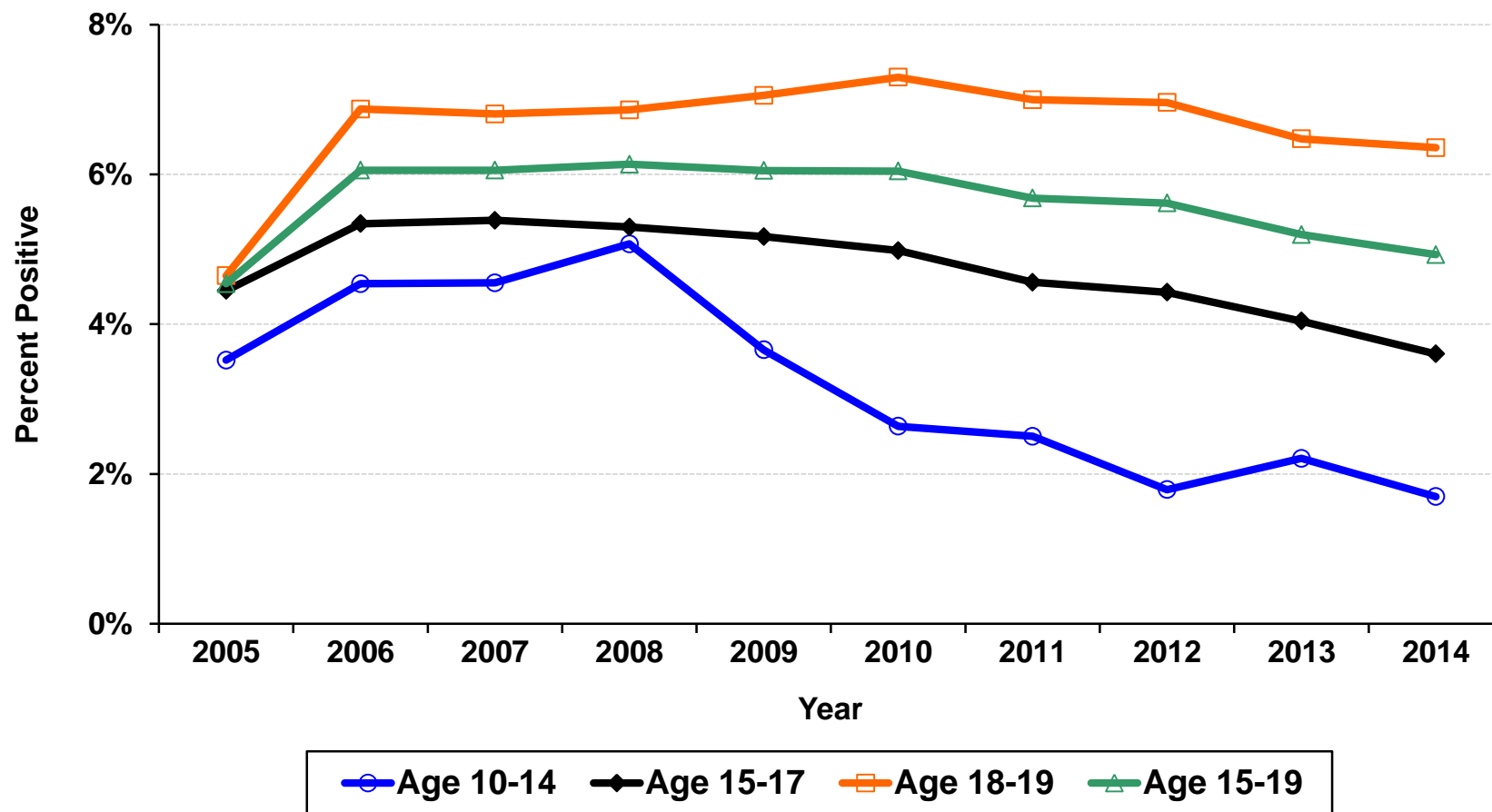


Data Source: California Department of Public Health, STD Control Branch
Prepared by: California Department of Public Health, STD Control Branch, July 2016

Chlamydia Prevalence Monitoring – Northern CA MCO

Percent Positive for Adolescent Females by Age Group

California, 2005–2014



Data Source: California Department of Public Health, STD Control Branch; Northern California Managed Care Organization (MCO)
 Prepared by: California Department of Public Health, STD Control Branch, July 2016