

California Adolescent Sexual Health Work Group (ASHWG) 2013 Data for California Adolescent Births, HIV/AIDS, STD

ASHWG Data and Evaluation Sub-Committee

Joan M. Chow, Laura Douglas, Denise Gilson
Sexually Transmitted Disease Control Branch
California Department of Public Health

Mara Decker, Anya Gutman
Bixby Center for Global Reproductive Health
University of California, San Francisco

Lissa Bayang, Czarina Behrends, Valorie Eckert
Office of AIDS, Center for Infectious Diseases
California Department of Public Health

Richard Chang
California Department of Health Care Services
Office of Family Planning-Family PACT

**Mary Campa, Marina Chabot, Mark Damesyn, Sarah
Leff, Christine Rinki, Tara Vishwanathan**
Maternal, Child, and Adolescent Health
California Department of Public Health

Petra Jerman
Public Health Institute

Christine De Rosa
Los Angeles County-Division of HIV and STD Programs

The California Adolescent Sexual Health Work Group (ASHWG) is a standing work group of program managers from the California Department of Public Health, California Department of Education, and key non-governmental organizations committed to working more effectively to address the sexual and reproductive health of California adolescents. Its vision is to create a coordinated, collaborative, and integrated system among government and non-government organizations to promote and protect the sexual and reproductive health of youth in California.

The ASHWG Data and Evaluation Subcommittee's intention is to improve comparability and expand access to and use of HIV, STD, and Teen Birth data. Members of this Sub-committee include epidemiologists from California Department of Public Health branches of Sexually Transmitted Diseases (STD) Control, Office of AIDS (OA), Maternal, Child and Adolescent Health (MCAH) and non-governmental "end users" of their data.

The ASHWG Data Tables and Charts for Adolescent Births, AIDS and STD are presented with standardized data elements across all conditions, i.e. age, race, gender, and timeframe. The purpose is to make useable data readily available for improved program planning, implementation and evaluation by programs serving adolescents at risk.

Resources

- *Sexually Transmitted Disease Surveillance, 2013*. Atlanta: U.S. Department of Health and Human Services; Release: Dec. 2014.
<http://www.cdc.gov/std/stats13/surv2013-print.pdf>
- Centers for Disease Control and Prevention. HIV Surveillance in Adolescents and Young Adults (2009-2013):
http://www.cdc.gov/hiv/pdf/statistics_surveillance_Adolescents.pdf
- *Prevalence of Sexually Transmitted Infections Among Female Adolescents Aged 14 to 19 in the United States*, Geraldine M. McQuillan, Stuart M. Berman and Lauri E. Markowitz, Sara E. Forhan, Sami L. Gottlieb, Maya R. Sternberg, Fujie Xu, S. Deblina Datta, *Pediatrics*, Volume 124, Number 6, December 2009.
<http://pediatrics.aappublications.org/cgi/content/abstract/peds.2009-0674v1>
- Adolescent Birth Rates, Percentage of Repeat Births and Births in High Poverty Areas by Medical Service Study Area: California, Aggregated 2010-2012. Chabot MJ, Campa M, Barr L, Damesyn M. California Department of Public Health, Maternal, Child and Adolescent Health Division. Sacramento CA, 2015.
<http://www.cdph.ca.gov/data/statistics/Pages/CAMSSAreport.aspx>

Additional Resources

- Adolescent Births in California, 2000-2013. California Department of Public Health, Maternal, Child and Adolescent Health Division. Sacramento CA, 2015.
<http://www.cdph.ca.gov/data/statistics/Documents/2013ABRPressRelease.pdf>
- Adolescent Sexual and Reproductive Health County Profile. California Department of Public Health, Maternal, Child and Adolescent Health Division. Sacramento CA, 2014.
<http://www.cdph.ca.gov/data/statistics/Pages/CountyHealthProfiles.aspx>
- California Adolescent Sexual Needs Health Index (CASHNI). California Department of Public Health, Maternal, Child and Adolescent Health Division. Sacramento CA, 2014.
<http://www.cdph.ca.gov/data/statistics/Documents/California%20Adolescent%20Sexual%20Health%20Needs%20Index.pdf>

Birth Rates for Females Age 10-19 by Mother's Age California, 2000 - 2013

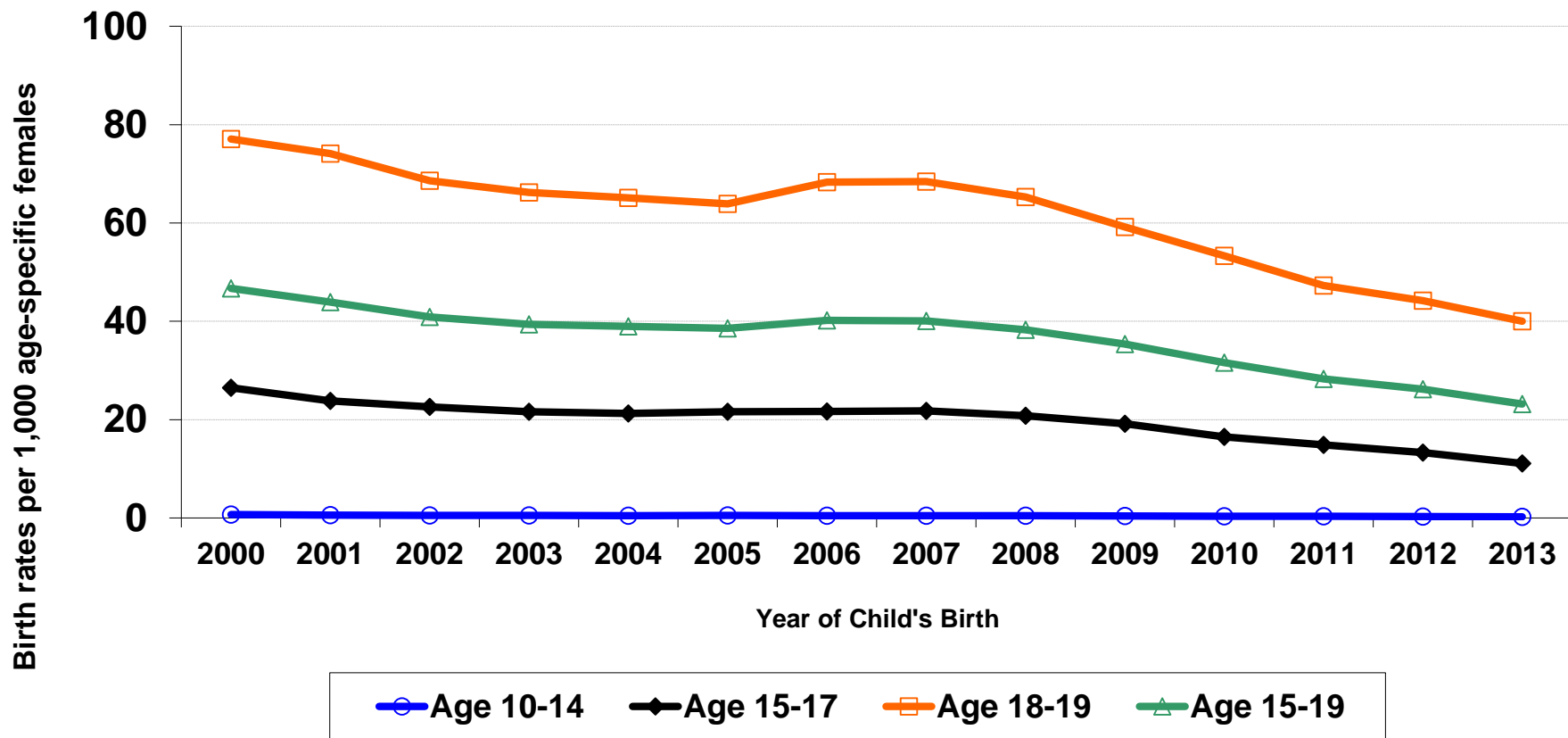
Adolescent Birth Rates* and Births by Mother's Age, For California Females** Age 10-19, 2000-2013														
Age Group	2000		2001		2002		2003		2004		2005		2006	
	Births	Birth Rate	Births	Birth Rate	Births	Birth Rate	Births	Birth Rate	Births	Birth Rate	Births	Birth Rate	Births	Birth Rate
Age 10-14	895	0.7	809	0.6	743	0.5	710	0.5	695	0.5	756	0.5	681	0.5
Age 15-17	18,887	26.5	17,307	23.8	16,660	22.4	16,193	21.2	16,263	20.6	16,740	20.3	17,208	20.0
Age 18-19	36,486	76.8	35,659	73.5	33,541	68.5	33,137	66.5	33,474	65.5	33,277	63.9	35,562	66.3
Age 15-19	55,373	46.7	52,966	43.7	50,201	40.7	49,330	39.1	49,737	38.2	50,017	37.2	52,770	37.8
Age Group	2007		2008		2009		2010		2011		2012		2013	
	Births	Birth Rate	Births	Birth Rate	Births	Birth Rate	Births	Birth Rate	Births	Birth Rate	Births	Birth Rate	Births	Birth Rate
Age 10-14	663	0.5	624	0.5	548	0.4	433	0.3	426	0.3	360	0.3	315	0.3
Age 15-17	17,582	19.9	17,008	19.1	15,418	17.5	13,308	16.5	11,839	14.9	10,359	13.3	8,525	11.1
Age 18-19	35,811	64.3	34,696	59.6	32,393	53.5	29,819	53.3	26,489	47.3	24,562	44.2	21,974	40.0
Age 15-19	53,393	31.7	51,704	35.2	47,811	32.1	43,127	31.6	38,328	28.3	34,921	26.2	30,499	23.2
*Rate per 1,000 age-specific females														
** Births included in these calculations are to mothers who report a California residence on the birth certification.														

Data Sources: Births: *Birth Statistical Master File*, 2000-2013 California Department of Public Health, Center for Health Statistics and Informatics. Population: State of California, Department of Finance, *State and County Population Projections by Race/Ethnicity, Sex, and Age 2010-2060*, Sacramento, California, December 2014.

Notes: The California birth rates presented here differ from the rates computed on the basis of other population estimates such as those published by the National Center for Health Statistics. These revised rates differ and should not be compared to rates published previously, which were based on the California Department of Finance population projections as of July, 2007 or January 2013. Rates are not computed for fewer than 20 events.

Prepared by: California Department of Public Health, Maternal, Child and Adolescent Health Division, Epidemiology, Assessment and Program Development Branch.

Birth Rates by Mother's Age, Females Age 10-19: California, 2000 - 2013



Data Sources: Births: *Birth Statistical Master File, 2000-2013* California Department of Public Health, Center for Health Statistics and Informatics.
 Population: State of California, Department of Finance, *State and County Population Projections by Race/Ethnicity, Sex, and Age 2010-2060*, Sacramento, California, December 2014.

Notes: The California birth rates presented here differ from the rates computed on the basis of other population estimates such as those published by the National Center for Health Statistics. These revised rates differ and should not be compared to rates published previously, which were based on the California Department of Finance population projections as of July, 2007 or January 2013. Rates are not computed for fewer than 20 events.

Prepared by: California Department of Public Health, Maternal, Child and Adolescent Health Division, Epidemiology, Assessment and Program Development Branch.

Birth Rates for Females Age 15-19 by Race/Ethnicity California, 2000 - 2013

Adolescent Birth Rates* and Births by Race/Ethnicity, For California Females** Age 15-19, 2000- 2013														
Race/Ethnicity	2000		2001		2002		2003		2004		2005		2006	
	Births	Birth Rate	Births	Birth Rate	Births	Birth Rate	Births	Birth Rate	Births	Birth Rate	Births	Birth Rate	Births	Birth Rate
White (Non Hispanic)	9,871	22.3	8,989	20.1	8,375	18.5	7,947	17.5	7,340	16.0	7,028	15.4	7,118	15.8
African American (Non Hispanic)	4,841	59.1	4,354	51.8	3,913	45.6	3,890	44.4	3,872	43.3	3,819	42.0	4,143	45.1
American Indian (Non Hispanic)	316	45.7	283	41.5	276	41.1	250	37.1	245	36.3	281	41.4	271	40.1
Asian/Pacific Islander (Non Hispanic)	2,286	15.8	2,125	14.6	1,919	13.2	1,809	12.2	1,679	11.2	1,675	11.1	1,549	10.5
Hispanic	36,892	77.3	36,051	73.6	34,613	69.1	34,252	66.2	35,315	66.1	36,025	65.2	38,243	66.9
Race/Ethnicity	2007		2008		2009		2010		2011		2012		2013	
	Births	Birth Rate	Births	Birth Rate	Births	Birth Rate	Births	Birth Rate	Births	Birth Rate	Births	Birth Rate	Births	Birth Rate
White (Non Hispanic)	6,995	15.7	6,690	15.3	5,976	14.3	5,374	13.1	4,565	11.4	4,097	10.5	3,531	9.3
African American (Non Hispanic)	4,169	45.0	4,099	44.0	3,741	40.5	3,333	37.3	2,969	34.1	2,610	31.0	2,299	28.3
American Indian (Non Hispanic)	278	41.4	262	39.4	252	38.5	215	35.2	171	28.5	179	30.7	168	29.4
Asian/Pacific Islander (Non Hispanic)	1,617	10.6	1,432	9.2	1,271	8.6	1,091	7.0	916	6.0	831	5.5	722	4.8
Hispanic	38,738	65.4	37,524	61.3	34,844	54.6	31,564	48.1	28,294	43.1	25,761	39.5	22,592	34.9

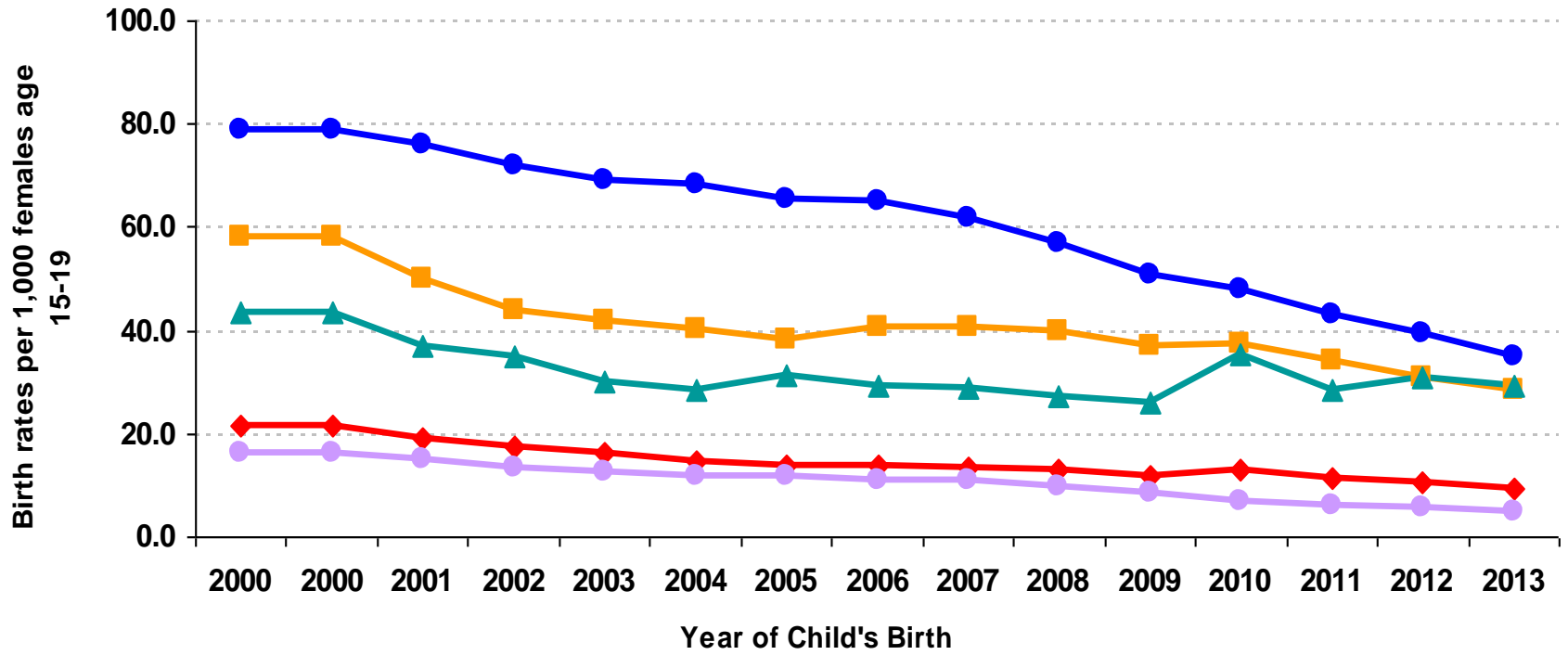
*Rate per 1,000 age-specific females
 ** Births included in these calculations are to mothers who report a California residence on the birth certification.

Data Sources: Births: *Birth Statistical Master File*, 2000-2013 California Department of Public Health, Center for Health Statistics and Informatics.
 Population: State of California, Department of Finance, *State and County Population Projections by Race/Ethnicity, Sex, and Age 2010-2060*, Sacramento, California, December 2014.

Notes: The California birth rates presented here differ from the rates computed on the basis of other population estimates such as those published by the National Center for Health Statistics. These revised rates differ and should not be compared to rates published previously, which were based on the California Department of Finance population projections as of July, 2007 or January 2013. Rates are not computed for fewer than 20 events.

Prepared by: California Department of Public Health, Maternal, Child and Adolescent Health Division, Epidemiology, Assessment and Program Development Branch.

Birth Rates for Females Age 15-19 by Race/Ethnicity California, 2000 - 2013



◆ White (Non Hispanic)
 ■ African American (Non Hispanic)
 ▲ American Indian (Non Hispanic)
● Asian/Pacific Islander (Non Hispanic)
 ● Hispanic

Data Sources: Births: *Birth Statistical Master File*, 2000-2013 California Department of Public Health, Center for Health Statistics and Informatics.
 Population: State of California, Department of Finance, *State and County Population Projections by Race/Ethnicity, Sex, and Age 2010-2060*, Sacramento, California, December 2014.

Notes: The California birth rates presented here differ from the rates computed on the basis of other population estimates such as those published by the National Center for Health Statistics. These revised rates differ and should not be compared to rates published previously, which were based on the California Department of Finance population projections as of July, 2007 or January 2013. Rates are not computed for fewer than 20 events.

Prepared by: California Department of Public Health, Maternal, Child and Adolescent Health Division, Epidemiology, Assessment and Program Development Branch.

Living Adolescent/Young Adult HIV/AIDS Rates - California

Living HIV/AIDS Cases and Rates Among 10-24 Year Olds by Race/Ethnicity, Age Group and Gender, Cumulative Cases Reported Through December 23, 2014					
AGE GROUP BY RACE/ETHNICITY		FEMALE		MALE	
		Cases	Rate	Cases	Rate
White					
Ages	10 - 14	9	2.6 *	5	1.4 *
	15 - 17	15	6.6	14	5.8
	18 - 19	12	6.8 *	31	16.5
	(15 - 19)	27	6.7	45	10.5
	20 - 24	56	12.9	500	104.8
African American/Black					
Ages	10 - 14	18	25.6	19	25.9
	15 - 17	23	47.4	21	41.6
	18 - 19	36	99.1	55	140.8
	(15 - 19)	59	139.1	76	84.8
	20 - 24	118	136.0	707	755.9
Hispanic/Latino					
Ages	10 - 14	29	4.6	26	4.0
	15 - 17	34	8.7	33	8.1
	18 - 19	32	11.8	89	31.0
	(15 - 19)	66	10.0	122	17.5
	20 - 24	148	23.9	1,003	148.7
Other/Unknown					
Ages	10 - 14	3	-	3	-
	15 - 17	5	-	3	-
	18 - 19	6	-	10	-
	(15 - 19)	11	-	13	-
	20 - 24	23	-	186	-
TOTAL					
Ages	10 - 14	59	4.8	53	4.1
	15 - 17	77	9.8	71	8.6
	18 - 19	86	15.1	185	30.5
	(15 - 19)	163	12.0	256	17.8
	20 - 24	345	25.4	2,396	162.7

Rates are per 100,000 population.

* Rates calculated with numerators of ≤ 12 are statistically unstable and should be interpreted with caution

No rates were calculated for the Other/Unknown group due to Unknown population size.

Other/Unknown includes Asian/Pacific Islanders, Native Americans, Multi-Race and those with missing race/ethnicity information.

Includes all cases diagnosed with HIV whose last known residence was in California.

Data Sources: California Department of Public Health, Office of AIDS, HIV Surveillance Section.

State of California, Department of Finance, Report P-3: State and County Population Projections by Race/Ethnicity, Detailed Age, and Gender, 2010-2060. Sacramento, California, January 2013.

Living Adolescent/Young Adult HIV/AIDS Rates - California

Living HIV/AIDS Cases and Rates Among 10-24 Year Olds for MSM and Heterosexual Contact Modes of Exposure by Race/Ethnicity, Age Group and Gender. Cumulative Cases Reported Through December 2, 2013

AGE GROUP BY RACE/ETHNICITY			FEMALE		MALE	
			Cases	Rate	Cases	Rate
White						
Ages	10 - 14	0	0.0	0	0.0	
	15 - 17	*	^	5	1.4	
	18 - 19	5	2.1	26	10.5	
	(15 - 19)	5	2.9	31	16.4	
	20 - 24	44	10.8	425	97.2	
African American/Black						
Ages	10 - 14	*	^	0	0.0	
	15 - 17	7	13.8	5	9.4	
	18 - 19	13	35.9	47	120.3	
	(15 - 19)	20	23.0	52	56.4	
	20 - 24	93	108.8	622	676.3	
Hispanic/Latino						
Ages	10 - 14	5	0.8	*	^	
	15 - 17	*	^	12	2.9	
	18 - 19	8	3.0	71	24.8	
	(15 - 19)	8	1.2	83	11.9	
	20 - 24	117	19.5	868	131.8	
Other/Unknown						
Ages	10 - 14	1	-	0	-	
	15 - 17	1	-	2	-	
	18 - 19	2	-	9	-	
	(15 - 19)	3	-	11	-	
	20 - 24	12	-	146	-	
TOTAL						
Ages	10 - 14	8	0.6	*	^	
	15 - 17	12	1.5	24	2.8	
	18 - 19	28	4.9	153	25.3	
	(15 - 19)	40	2.9	177	12.2	
	20 - 24	266	19.8	2,061	141.6	

*Data withheld to ensure case confidentiality.

^Rates not calculated for suppressed case counts.

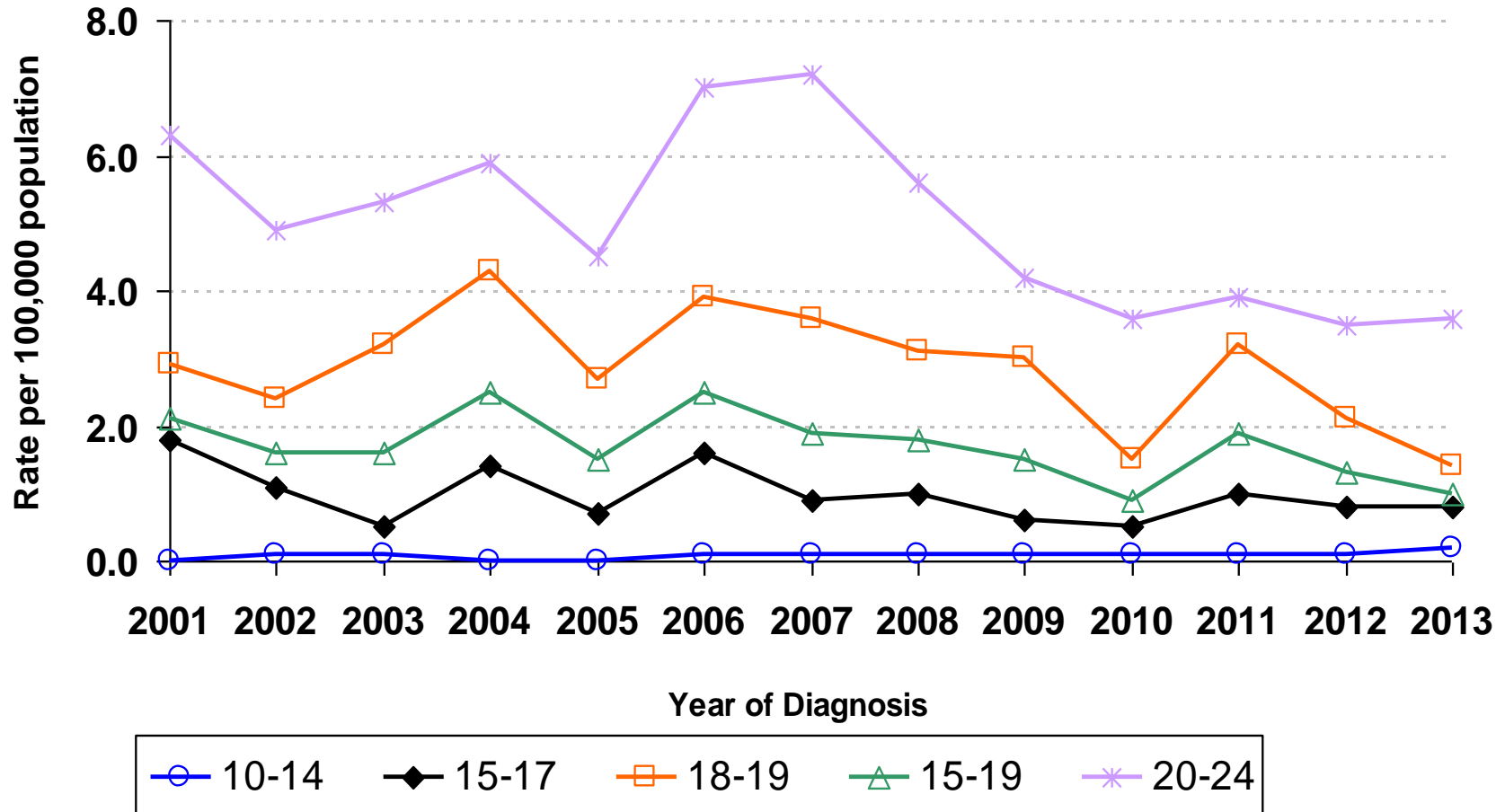
MSM=Men who have sex with men.

Other/Unknown includes Asian/Pacific Islanders, Native Americans, Multi-Race and those with missing race/ethnicity information.

Data Sources: California Department of Public Health, Office of AIDS, HIV Surveillance Section, data as of Dec. 2, 2013. Teen population: California Department of Finance, *Race/Hispanics Population with Age and Gender Detail, 2000-2010*. September 2012 and California Department of Finance, *Report P-3: State and County Population Projections by Race/Ethnicity, Detailed Age, and Gender, 2010-2060*. January 2013.

Prepared by: California Department of Public Health, Office of AIDS, Data Management and Analysis Unit.

HIV Cases by Year of Diagnosis for Females by Age Group California, 2001 - 2013

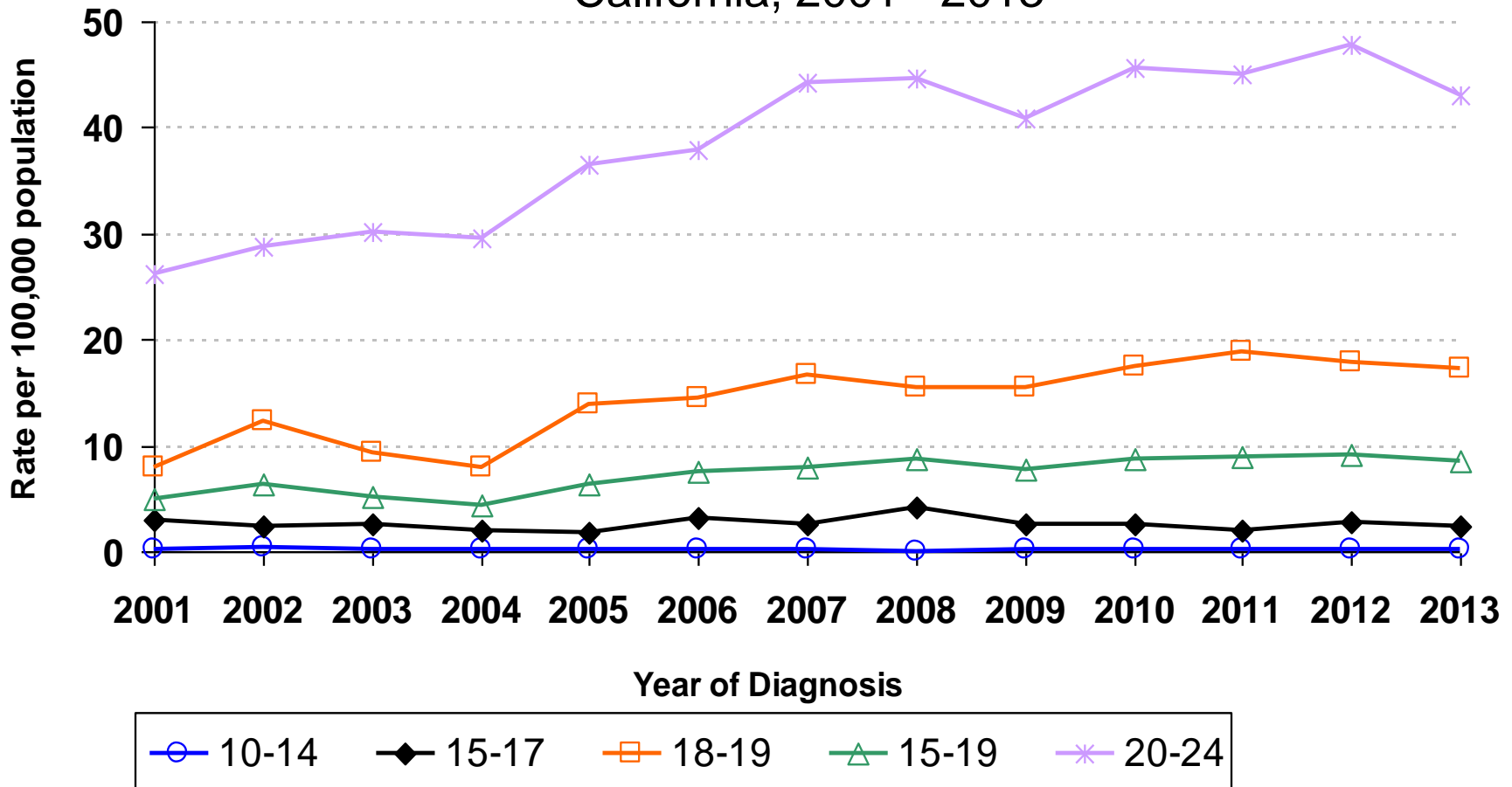


Data Sources: California Department of Public Health, Office of AIDS, HIV Surveillance Section, data as of Dec. 2, 2013. Teen population: California Department of Finance, *Race/Hispanics Population with Age and Gender Detail, 2000-2010*. September 2012 and California Department of Finance, *Report P-3: State and County Population Projections by Race/Ethnicity, Detailed Age, and Gender, 2010-2060*. January 2013.

Prepared by: California Department of Public Health, Office of AIDS, Data Management and Analysis Unit.



HIV Cases by Year of Diagnosis for Males by Age Group California, 2001 - 2013



Data Sources: California Department of Public Health, Office of AIDS, HIV Surveillance Section, data as of Dec. 2, 2013. Teen population: California Department of Finance, *Race/Hispanics Population with Age and Gender Detail, 2000–2010*. September 2012 and California Department of Finance, *Report P-3: State and County Population Projections by Race/Ethnicity, Detailed Age, and Gender, 2010-2060*. January 2013.

Prepared by: California Department of Public Health, Office of AIDS, Data Management and Analysis Unit.



Chlamydia Rates for Adolescent Females by Age Group California, 2000–2013

Chlamydia Rates* for Adolescent Females by Age Group California, 2000–2013														
Age Group	2000		2001		2002		2003		2004		2005		2006	
	Cases	Rate	Cases	Rate	Cases	Rate	Cases	Rate	Cases	Rate	Cases	Rate	Cases	Rate
10-14	1,362	107.4	1,247	95.3	1,323	99.0	1,226	90.4	1,304	95.7	1,193	88.0	1,139	84.6
15-17	11,399	1,598.0	11,385	1,567.7	11,946	1,619.5	12,269	1,635.1	12,653	1,661.0	13,176	1,700.2	13,519	1,705.6
18-19	13,937	2,945.2	14,345	2,979.9	15,010	3,069.5	15,714	3,141.3	16,635	3,235.3	17,348	3,329.5	18,332	3,521.4
15-19	25,336	2,135.3	25,730	2,130.7	26,956	2,197.6	27,983	2,237.6	29,288	2,295.4	30,524	2,355.2	31,851	2,425.5

Age Group	2007		2008		2009		2010		2011		2012		2013	
	Cases	Rate	Cases	Rate	Cases	Rate	Cases	Rate	Cases	Rate	Cases	Rate	Cases	Rate
10-14	1,130	84.8	1,145	86.9	1,018	80.1	908	72.0	961	77.1	840	68.0	762	62.0
15-17	13,726	1,699.0	14,057	1,720.4	12,942	1,614.4	12,818	1,590.5	12,961	1,636.3	11,935	1,534.3	10,613	1,388.9
18-19	19,599	3,745.9	20,616	3,880.9	20,373	3,722.4	20,634	3,691.8	20,900	3,736.8	20,058	3,612.3	18,809	3,426.3
15-19	33,325	2,503.6	34,673	2,571.6	33,315	2,469.7	33,452	2,451.0	33,861	2,505.6	31,993	2,399.8	29,422	2,240.6

* Rate per 100,000 population

Data Sources: California Department of Public Health, STD Control Branch

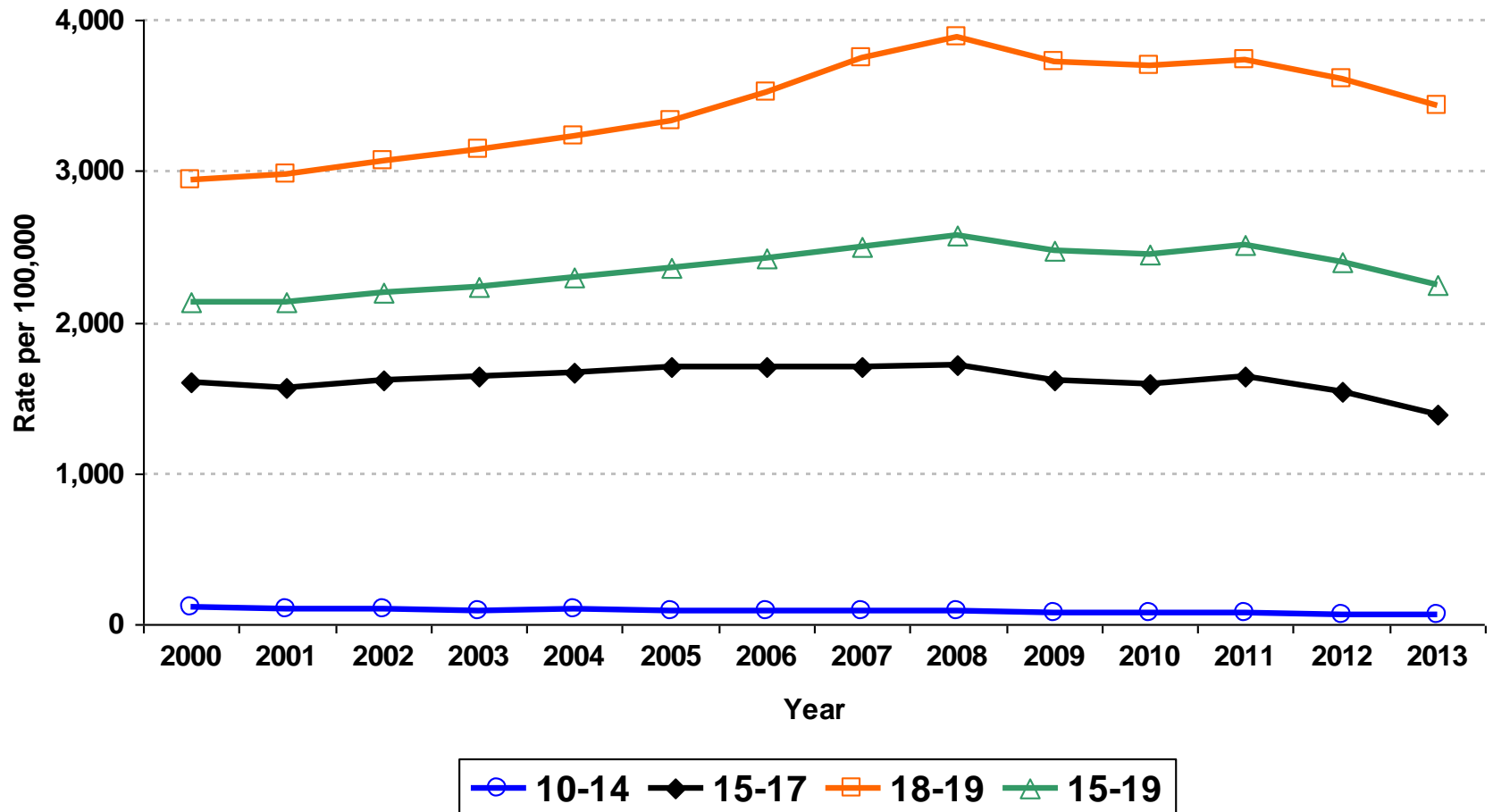
State of California, Department of Finance, *Race/Hispanics Population with Age and Gender Detail, 2000-2010*. Sacramento, California, September 2012

State of California, Department of Finance, *Report P-3: State and County Population Projections by Race/Ethnicity, Detailed Age, and Gender, 2010-2060*.

Sacramento, California, December 2014

Prepared by: California Department of Public Health, STD Control Branch, January 2015

Chlamydia Rates for Adolescent Females by Age Group California, 2000–2013



Data Sources: California Department of Public Health, STD Control Branch
 State of California, Department of Finance, *Race/Hispanics Population with Age and Gender Detail, 2000-2010*. Sacramento, California, September 2012
 State of California, Department of Finance, *Report P-3: State and County Population Projections by Race/Ethnicity, Detailed Age, and Gender, 2010-2060*.
 Sacramento, California, December 2014
 Prepared by: California Department of Public Health, STD Control Branch, January 2015

Chlamydia Rates for Females Age 15-19 by Race/Ethnicity California, 2000–2013

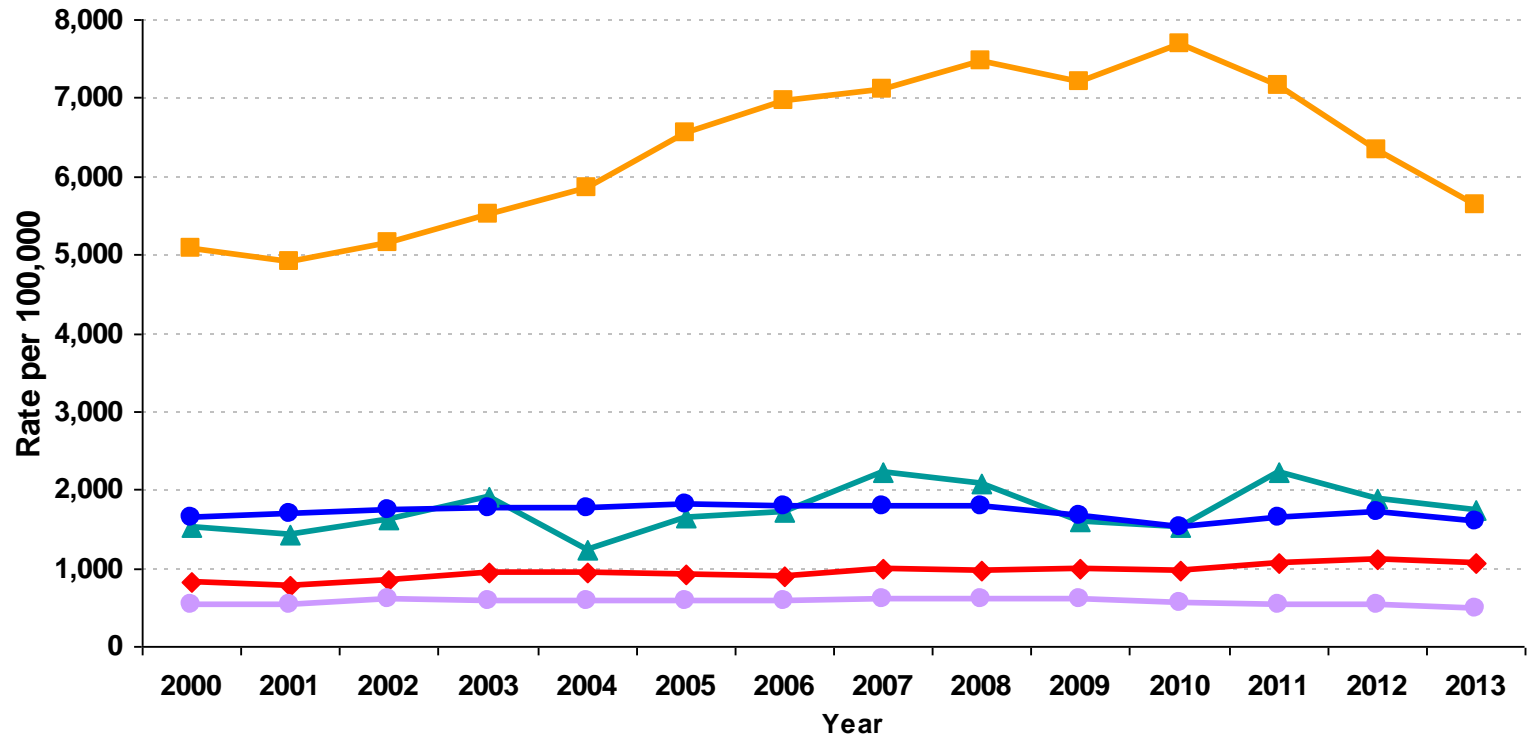
Chlamydia Rates* by Race/Ethnicity, For Female California Residents Age 15-19, 2000–2013														
Race/Ethnicity	2000		2001		2002		2003		2004		2005		2006	
	Cases	Rate	Cases	Rate	Cases	Rate	Cases	Rate	Cases	Rate	Cases	Rate	Cases	Rate
Native American/Alaskan Native	106	1,533.8	98	1,436.6	109	1,621.6	129	1,915.0	83	1,230.3	111	1,637.3	116	1,718.4
Asian/Pacific Islander	758	524.1	759	521.8	880	603.4	872	590.4	878	586.5	874	580.2	880	580.8
African American/Black	4,164	5,079.7	4,120	4,900.0	4,427	5,155.7	4,821	5,503.5	5,236	5,857.5	5,946	6,542.7	6,382	6,949.7
Hispanic/Latino	7,799	1,634.1	8,268	1,688.1	8,686	1,733.4	9,117	1,763.4	9,402	1,758.5	9,971	1,804.1	10,243	1,791.5
White	3,596	812.1	3,422	764.9	3,810	843.0	4,297	944.1	4,356	951.7	4,145	909.1	4,064	901.3

Race/Ethnicity	2007		2008		2009		2010		2011		2012		2013	
	Cases	Rate	Cases	Rate	Cases	Rate	Cases	Rate	Cases	Rate	Cases	Rate	Cases	Rate
Native American/Alaskan Native	149	2,218.2	139	2,088.0	104	1,589.3	93	1,525.4	133	2,217.1	110	1,886.9	100	1,751.5
Asian/Pacific Islander	912	595.5	937	605.1	890	602.9	868	559.1	816	533.2	787	520.6	723	486.0
African American/Black	6,567	7,095.2	6,955	7,467.6	6,647	7,202.4	6,854	7,679.0	6,223	7,150.2	5,334	6,334.6	4,576	5,640.3
Hispanic/Latino	10,618	1,793.3	10,914	1,782.7	10,710	1,678.3	10,014	1,525.9	10,733	1,636.9	11,194	1,718.7	10,264	1,588.1
White	4,382	985.7	4,261	973.5	4,154	993.3	4,004	977.7	4,279	1,069.0	4,326	1,107.3	4,012	1,053.4

* Rate per 100,000 age- and gender-specific population

Data Sources: California Department of Public Health, STD Control Branch
 State of California, Department of Finance, *Race/Hispanics Population with Age and Gender Detail, 2000-2010*. Sacramento, California, September 2012
 State of California, Department of Finance, *Report P-3: State and County Population Projections by Race/Ethnicity, Detailed Age, and Gender, 2010-2060*.
 Sacramento, California, December 2014
 Prepared by: California Department of Public Health, STD Control Branch, January 2015

Chlamydia Rates for Females Age 15-19 by Race/Ethnicity California, 2000–2013



Data Sources: California Department of Public Health, STD Control Branch
 State of California, Department of Finance, *Race/Hispanics Population with Age and Gender Detail, 2000-2010*. Sacramento, California, September 2012
 State of California, Department of Finance, *Report P-3: State and County Population Projections by Race/Ethnicity, Detailed Age, and Gender, 2010-2060*.
 Sacramento, California, December 2014
 Prepared by: California Department of Public Health, STD Control Branch, January 2015

Chlamydia Rates for Adolescent Males by Age Group California, 2000–2013

Chlamydia Rates* for Adolescent Males by Age Group California, 2000–2013														
Age Group	2000		2001		2002		2003		2004		2005		2006	
	Cases	Rate	Cases	Rate	Cases	Rate	Cases	Rate	Cases	Rate	Cases	Rate	Cases	Rate
10-14	154	11.6	162	11.7	165	11.7	134	9.4	174	12.1	142	9.9	148	10.5
15-17	2,463	323.1	2,567	333.7	2,629	336.7	2,697	339.0	2,760	340.8	3,067	371.5	3,200	377.8
18-19	2,767	534.5	2,964	569.5	3,099	592.1	3,401	638.3	3,651	664.8	3,924	699.7	4,202	745.0
15-19	5,230	408.6	5,531	428.9	5,728	439.2	6,098	459.1	6,411	471.8	6,991	504.3	7,402	524.5

Age Group	2007		2008		2009		2010		2011		2012		2013	
	Cases	Rate	Cases	Rate	Cases	Rate	Cases	Rate	Cases	Rate	Cases	Rate	Cases	Rate
10-14	143	10.2	180	13.1	157	11.9	174	13.2	149	11.4	125	9.7	116	9.0
15-17	3,354	388.4	3,531	404.1	3,286	386.6	3,236	379.7	3,195	382.8	2,874	352.1	2,691	336.7
18-19	4,724	832.3	5,122	890.6	5,306	899.3	5,523	918.6	5,349	892.5	5,200	878.0	4,775	819.6
15-19	8,078	564.4	8,653	597.3	8,592	596.7	8,759	602.6	8,544	595.8	8,074	573.2	7,466	540.3

* Rate per 100,000 population

Data Sources: California Department of Public Health, STD Control Branch

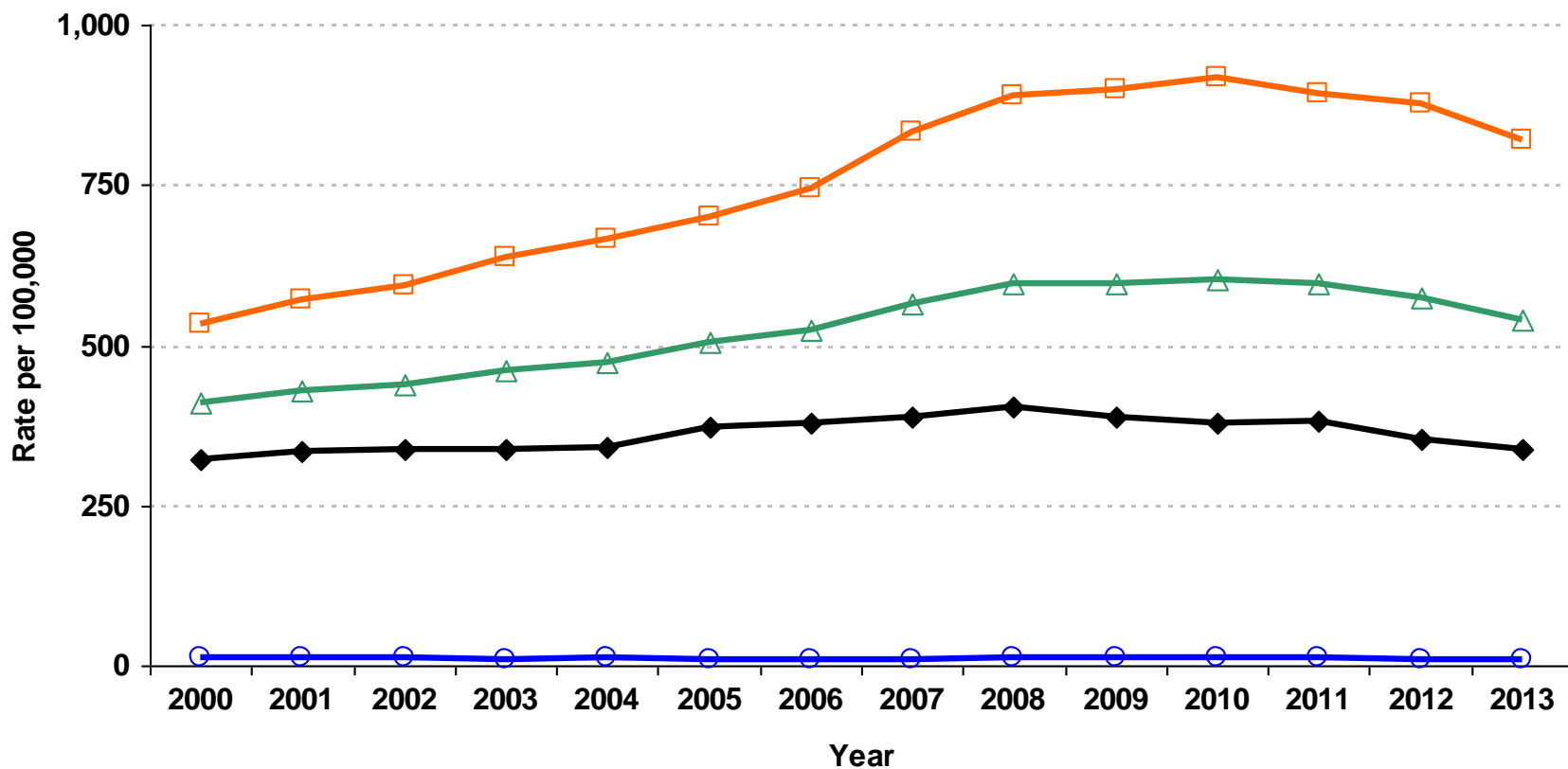
State of California, Department of Finance, *Race/Hispanics Population with Age and Gender Detail, 2000-2010*. Sacramento, California, September 2012

State of California, Department of Finance, *Report P-3: State and County Population Projections by Race/Ethnicity, Detailed Age, and Gender, 2010-2060*.

Sacramento, California, December 2014

Prepared by: California Department of Public Health, STD Control Branch, January 2015

Chlamydia Rates for Adolescent Males by Age Group California, 2000–2013



○ 10-14
 ◆ 15-17
 □ 18-19
 △ 15-19

Data Sources: California Department of Public Health, STD Control Branch
 State of California, Department of Finance, *Race/Hispanics Population with Age and Gender Detail, 2000-2010*. Sacramento, California, September 2012
 State of California, Department of Finance, *Report P-3: State and County Population Projections by Race/Ethnicity, Detailed Age, and Gender, 2010-2060*.
 Sacramento, California, December 2014
 Prepared by: California Department of Public Health, STD Control Branch, January 2015

Chlamydia Rates for Males Age 15-19 by Race/Ethnicity California, 2000–2013

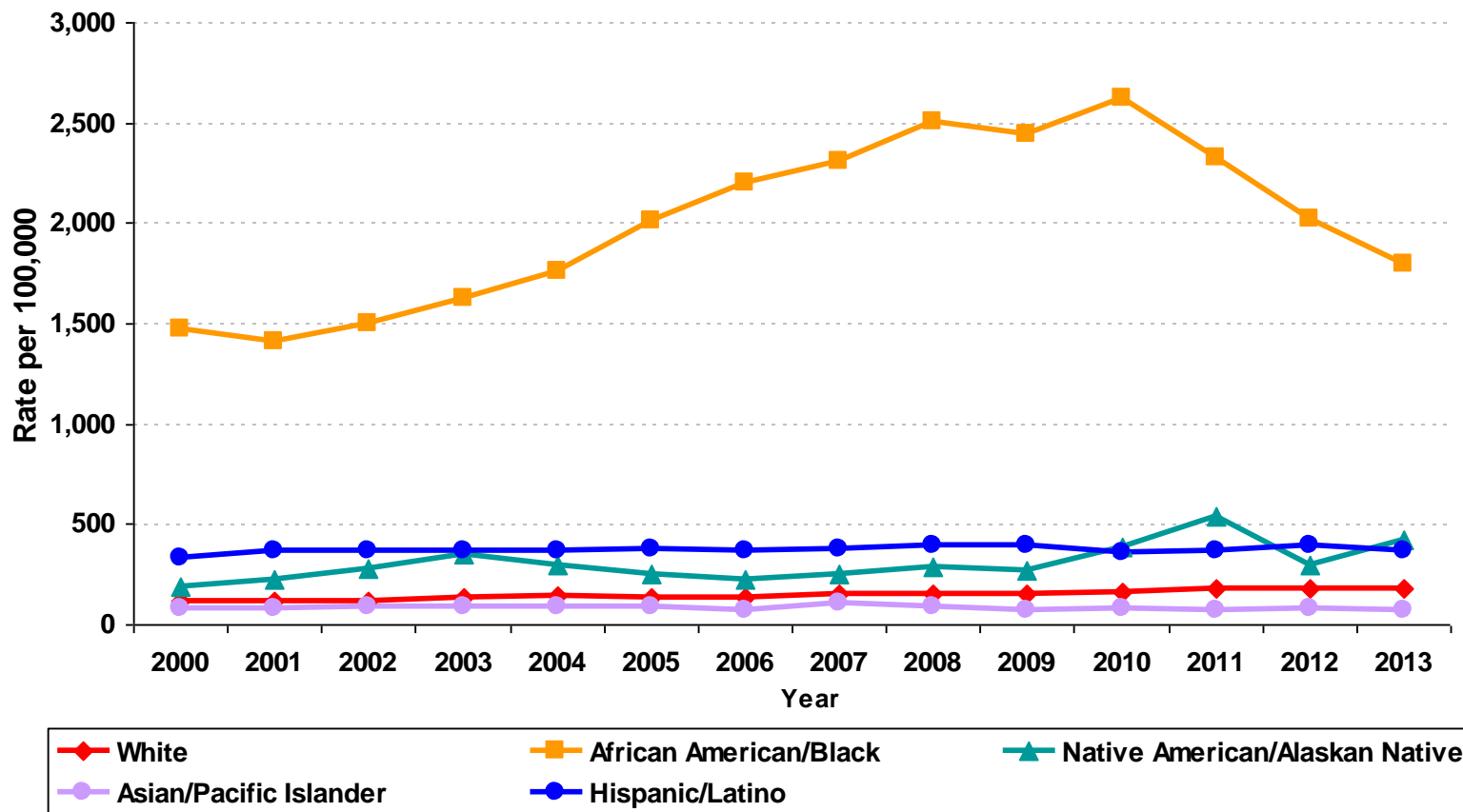
Chlamydia Rates* by Race/Ethnicity, For Male California Residents Age 15-19, 2000–2013														
Race/Ethnicity	2000		2001		2002		2003		2004		2005		2006	
	Cases	Rate	Cases	Rate	Cases	Rate	Cases	Rate	Cases	Rate	Cases	Rate	Cases	Rate
Native American/Alaskan Native	14	190.5	16	220.3	20	276.8	25	348.8	21	293.4	18	251.1	16	222.8
Asian/Pacific Islander	127	83.6	129	84.5	134	87.6	133	85.7	146	92.4	142	88.8	117	72.4
African American/Black	1,294	1,474.4	1,253	1,414.6	1,344	1,500.5	1,475	1,628.9	1,624	1,764.0	1,886	2,010.8	2,099	2,199.3
Hispanic/Latino	1,768	334.5	1,948	365.5	1,979	366.1	2,074	372.4	2,150	371.9	2,243	373.4	2,280	366.2
White	533	112.8	534	112.5	540	112.6	662	137.1	703	144.4	676	139.0	650	134.1

Race/Ethnicity	2007		2008		2009		2010		2011		2012		2013	
	Cases	Rate	Cases	Rate	Cases	Rate	Cases	Rate	Cases	Rate	Cases	Rate	Cases	Rate
Native American/Alaskan Native	18	250.3	21	289.8	19	271.3	25	388.5	34	537.9	18	294.6	25	418.3
Asian/Pacific Islander	170	103.5	148	88.8	122	76.0	135	81.8	123	75.3	133	82.4	118	74.2
African American/Black	2,229	2,304.0	2,455	2,508.8	2,375	2,444.7	2,492	2,622.8	2,147	2,325.4	1,796	2,023.0	1,530	1,794.1
Hispanic/Latino	2,417	375.8	2,604	393.1	2,669	392.1	2,476	356.1	2,543	368.0	2,691	394.2	2,466	366.0
White	728	152.1	701	148.7	703	156.9	735	166.1	782	181.6	754	180.1	723	177.9

* Rate per 100,000 age- and gender-specific population

Data Sources: California Department of Public Health, STD Control Branch
 State of California, Department of Finance, *Race/Hispanics Population with Age and Gender Detail, 2000-2010*. Sacramento, California, September 2012
 State of California, Department of Finance, *Report P-3: State and County Population Projections by Race/Ethnicity, Detailed Age, and Gender, 2010-2060*.
 Sacramento, California, December 2014
 Prepared by: California Department of Public Health, STD Control Branch, January 2015

Chlamydia Rates for Males Age 15-19 by Race/Ethnicity California, 2000–2013



Data Sources: California Department of Public Health, STD Control Branch
 State of California, Department of Finance, *Race/Hispanics Population with Age and Gender Detail, 2000-2010*. Sacramento, California, September 2012
 State of California, Department of Finance, *Report P-3: State and County Population Projections by Race/Ethnicity, Detailed Age, and Gender, 2010-2060*.
 Sacramento, California, December 2014
 Prepared by: California Department of Public Health, STD Control Branch, January 2015

Gonorrhea Rates for Adolescent Females by Age Group California, 2000–2013

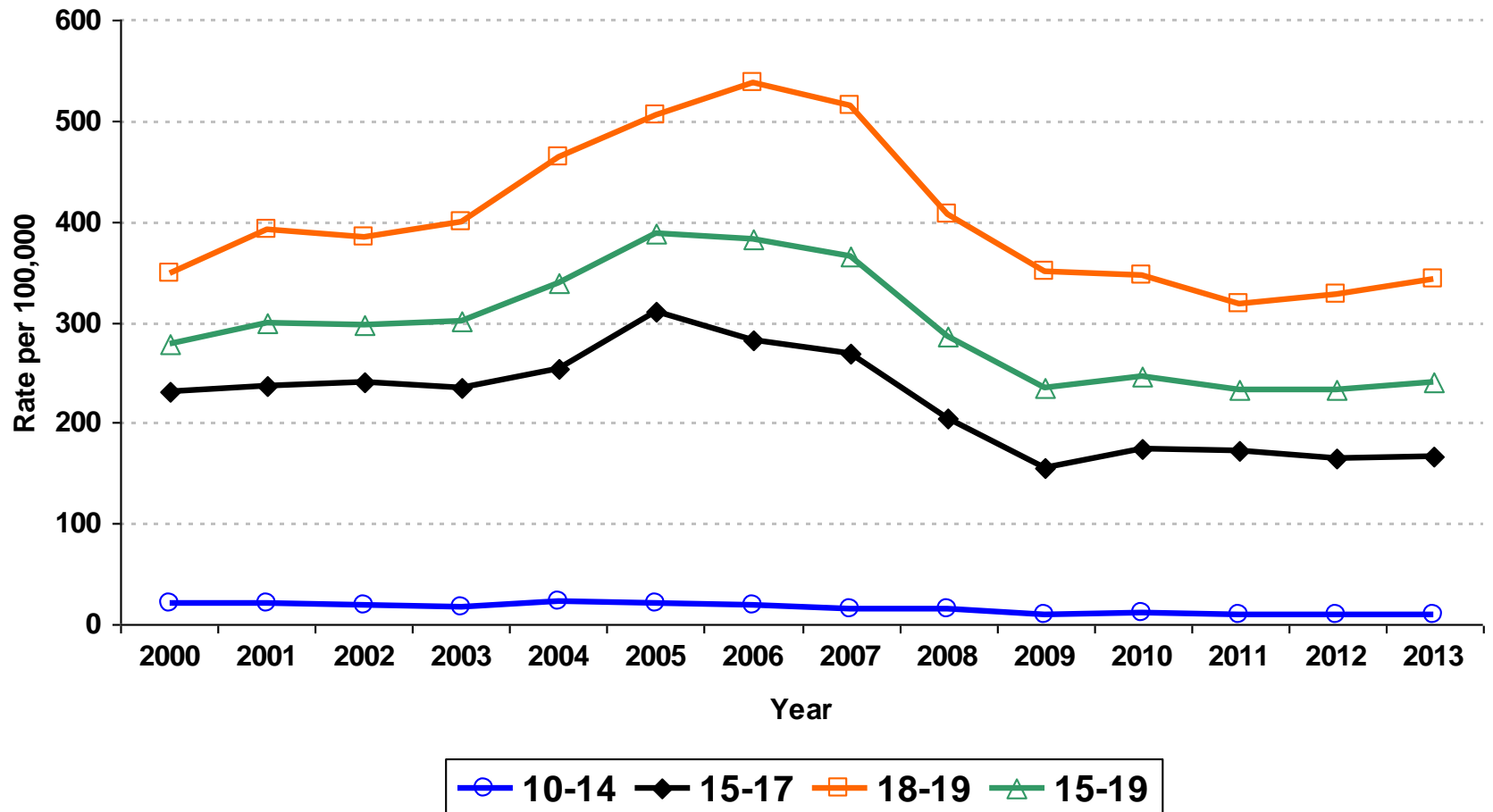
Gonorrhea Rates* for Adolescent Females by Age Group California, 2000–2013														
Age Group	2000		2001		2002		2003		2004		2005		2006	
	Cases	Rate	Cases	Rate	Cases	Rate	Cases	Rate	Cases	Rate	Cases	Rate	Cases	Rate
10-14	257	20.3	273	20.9	240	18.0	224	16.5	297	21.8	289	21.3	255	18.9
15-17	1,648	231.0	1,718	236.6	1,769	239.8	1,756	234.0	1,932	253.6	2,404	310.2	2,229	281.2
18-19	1,647	348.1	1,890	392.6	1,882	384.9	2,000	399.8	2,387	464.2	2,634	505.5	2,798	537.5
15-19	3,295	277.7	3,608	298.8	3,651	297.6	3,756	300.3	4,319	338.5	5,038	388.7	5,027	382.8

Age Group	2007		2008		2009		2010		2011		2012		2013	
	Cases	Rate	Cases	Rate	Cases	Rate	Cases	Rate	Cases	Rate	Cases	Rate	Cases	Rate
10-14	213	16.0	201	15.3	116	9.1	148	11.7	125	10.0	110	8.9	112	9.1
15-17	2,169	268.5	1,676	205.1	1,249	155.8	1,408	174.7	1,367	172.6	1,286	165.3	1,269	166.1
18-19	2,690	514.1	2,166	407.7	1,916	350.1	1,941	347.3	1,776	317.5	1,819	327.6	1,884	343.2
15-19	4,859	365.0	3,842	285.0	3,165	234.6	3,349	245.4	3,143	232.6	3,105	232.9	3,153	240.1

* Rate per 100,000 population

Data Sources: California Department of Public Health, STD Control Branch
 State of California, Department of Finance, *Race/Hispanics Population with Age and Gender Detail, 2000-2010*. Sacramento, California, September 2012
 State of California, Department of Finance, *Report P-3: State and County Population Projections by Race/Ethnicity, Detailed Age, and Gender, 2010-2060*.
 Sacramento, California, December 2014
 Prepared by: California Department of Public Health, STD Control Branch, January 2015

Gonorrhea Rates for Adolescent Females by Age Group California, 2000–2013



Data Sources: California Department of Public Health, STD Control Branch
 State of California, Department of Finance, *Race/Hispanics Population with Age and Gender Detail, 2000-2010*. Sacramento, California, September 2012
 State of California, Department of Finance, *Report P-3: State and County Population Projections by Race/Ethnicity, Detailed Age, and Gender, 2010-2060*.
 Sacramento, California, December 2014
 Prepared by: California Department of Public Health, STD Control Branch, January 2015

Gonorrhea Rates for Females Age 15-19 by Race/Ethnicity California, 2000–2013

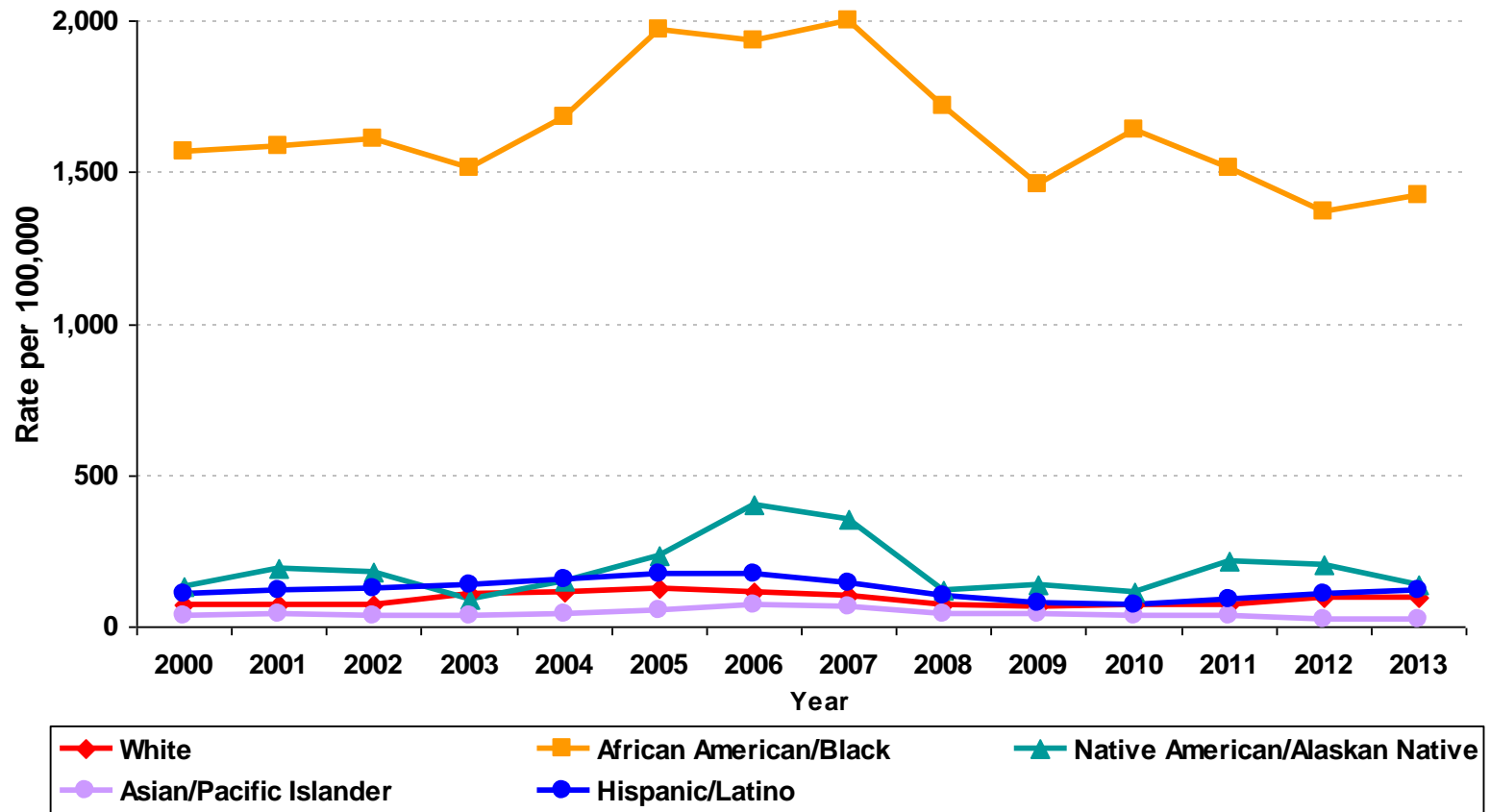
Gonorrhea Rates* by Race/Ethnicity, For Female California Residents Age 15-19, 2000–2013														
Race/Ethnicity	2000		2001		2002		2003		2004		2005		2006	
	Cases	Rate	Cases	Rate	Cases	Rate	Cases	Rate	Cases	Rate	Cases	Rate	Cases	Rate
Native American/Alaskan Native	9	130.2	13	190.6	12	178.5	6	89.1	10	148.2	16	236.0	27	400.0
Asian/Pacific Islander	50	34.6	59	40.6	55	37.7	53	35.9	67	44.8	85	56.4	107	70.6
African American/Black	1,283	1,565.1	1,331	1,583.0	1,382	1,609.5	1,324	1,511.4	1,505	1,683.6	1,790	1,969.6	1,776	1,934.0
Hispanic/Latino	503	105.4	593	121.1	628	125.3	700	135.4	840	157.1	969	175.3	1,010	176.6
White	307	69.3	322	72.0	322	71.2	487	107.0	527	115.1	583	127.9	515	114.2

Race/Ethnicity	2007		2008		2009		2010		2011		2012		2013	
	Cases	Rate	Cases	Rate	Cases	Rate	Cases	Rate	Cases	Rate	Cases	Rate	Cases	Rate
Native American/Alaskan Native	24	357.3	8	120.2	9	137.5	7	114.8	13	216.7	12	205.8	8	140.1
Asian/Pacific Islander	98	64.0	64	41.3	61	41.3	53	34.1	57	37.2	38	25.1	40	26.9
African American/Black	1,852	2,000.9	1,599	1,716.8	1,349	1,461.7	1,461	1,636.9	1,319	1,515.5	1,151	1,366.9	1,155	1,423.6
Hispanic/Latino	847	143.0	628	102.6	493	77.3	483	73.6	572	87.2	705	108.2	787	121.8
White	452	101.7	328	74.9	278	66.5	286	69.8	290	72.5	364	93.2	361	94.8

* Rate per 100,000 age- and gender-specific population

Data Sources: California Department of Public Health, STD Control Branch
 State of California, Department of Finance, *Race/Hispanics Population with Age and Gender Detail, 2000-2010*. Sacramento, California, September 2012
 State of California, Department of Finance, *Report P-3: State and County Population Projections by Race/Ethnicity, Detailed Age, and Gender, 2010-2060*.
 Sacramento, California, December 2014
 Prepared by: California Department of Public Health, STD Control Branch, January 2015

Gonorrhea Rates for Females Age 15-19 by Race/Ethnicity California, 2000–2013



Data Sources: California Department of Public Health, STD Control Branch
 State of California, Department of Finance, *Race/Hispanics Population with Age and Gender Detail, 2000-2010*. Sacramento, California, September 2012
 State of California, Department of Finance, *Report P-3: State and County Population Projections by Race/Ethnicity, Detailed Age, and Gender, 2010-2060*.
 Sacramento, California, December 2014
 Prepared by: California Department of Public Health, STD Control Branch, January 2015

Gonorrhea Rates for Adolescent Males by Age Group California, 2000–2013

Gonorrhea Rates* for Adolescent Males by Age Group California, 2000–2013														
Age Group	2000		2001		2002		2003		2004		2005		2006	
	Cases	Rate	Cases	Rate	Cases	Rate	Cases	Rate	Cases	Rate	Cases	Rate	Cases	Rate
10-14	38	2.9	30	2.2	28	2.0	41	2.9	45	3.1	65	4.5	56	4.0
15-17	474	62.2	472	61.4	533	68.3	553	69.5	714	88.2	807	97.8	784	92.6
18-19	904	174.6	932	179.1	958	183.0	1,035	194.3	1,203	219.1	1,392	248.2	1,444	256.0
15-19	1,378	107.7	1,404	108.9	1,491	114.3	1,588	119.6	1,917	141.1	2,199	158.6	2,228	157.9

Age Group	2007		2008		2009		2010		2011		2012		2013	
	Cases	Rate	Cases	Rate	Cases	Rate	Cases	Rate	Cases	Rate	Cases	Rate	Cases	Rate
10-14	50	3.6	41	3.0	29	2.2	32	2.4	29	2.2	35	2.7	25	1.9
15-17	839	97.2	659	75.4	529	62.2	581	68.2	553	66.3	554	67.9	585	73.2
18-19	1,453	256.0	1,301	226.2	1,234	209.1	1,315	218.7	1,123	187.4	1,275	215.3	1,370	235.2
15-19	2,292	160.1	1,960	135.3	1,763	122.4	1,896	130.5	1,676	116.9	1,829	129.9	1,955	141.5

* Rate per 100,000 population

Data Sources: California Department of Public Health, STD Control Branch

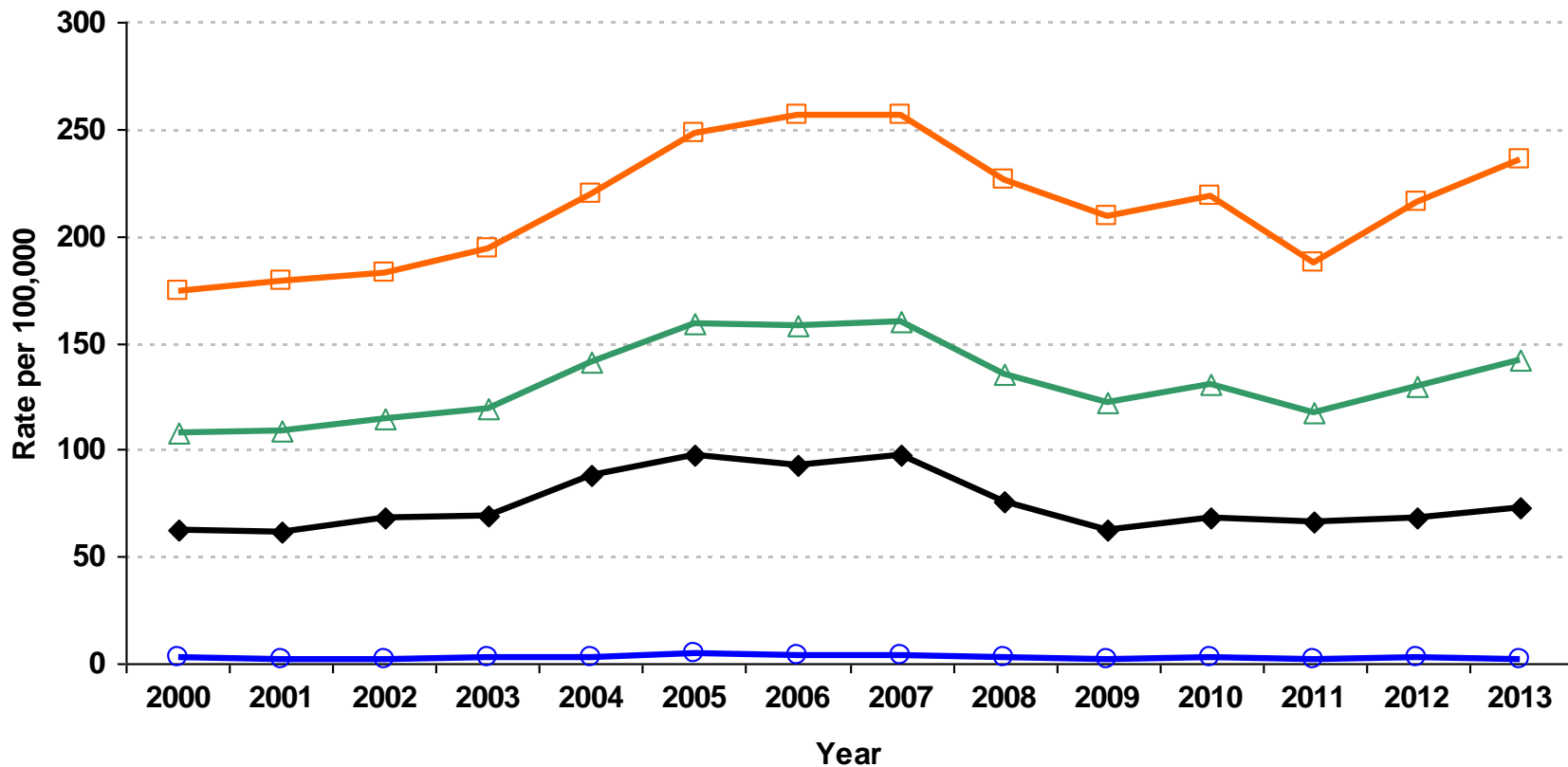
State of California, Department of Finance, *Race/Hispanics Population with Age and Gender Detail, 2000-2010*. Sacramento, California, September 2012

State of California, Department of Finance, *Report P-3: State and County Population Projections by Race/Ethnicity, Detailed Age, and Gender, 2010-2060*.

Sacramento, California, December 2014

Prepared by: California Department of Public Health, STD Control Branch, January 2015

Gonorrhea Rates for Adolescent Males by Age Group California, 2000–2013



—○— 10-14
 —◆— 15-17
 —□— 18-19
 —△— 15-19

Data Sources: California Department of Public Health, STD Control Branch
 State of California, Department of Finance, *Race/Hispanics Population with Age and Gender Detail, 2000-2010*. Sacramento, California, September 2012
 State of California, Department of Finance, *Report P-3: State and County Population Projections by Race/Ethnicity, Detailed Age, and Gender, 2010-2060*.
 Sacramento, California, December 2014
 Prepared by: California Department of Public Health, STD Control Branch, January 2015

Gonorrhea Rates for Males Age 15-19 by Race/Ethnicity California, 2000–2013

Gonorrhea Rates* by Race/Ethnicity, For Male California Residents Age 15-19, 2000–2013														
Race/Ethnicity	2000		2001		2002		2003		2004		2005		2006	
	Cases	Rate	Cases	Rate	Cases	Rate	Cases	Rate	Cases	Rate	Cases	Rate	Cases	Rate
Native American/Alaskan Native	0	0.0	5	68.8	1	13.8	4	55.8	8	111.8	4	55.8	6	83.5
Asian/Pacific Islander	11	7.2	14	9.2	20	13.1	22	14.2	28	17.7	26	16.3	32	19.8
African American/Black	513	584.5	503	567.9	528	589.5	600	662.6	707	767.9	909	969.1	890	932.5
Hispanic/Latino	266	50.3	291	54.6	298	55.1	346	62.1	418	72.3	437	72.7	447	71.8
White	106	22.4	118	24.9	131	27.3	165	34.2	196	40.3	198	40.7	149	30.8

Race/Ethnicity	2007		2008		2009		2010		2011		2012		2013	
	Cases	Rate	Cases	Rate	Cases	Rate	Cases	Rate	Cases	Rate	Cases	Rate	Cases	Rate
Native American/Alaskan Native	11	152.9	5	69.0	0	0.0	4	62.2	2	31.6	4	65.5	3	50.2
Asian/Pacific Islander	26	15.8	24	14.4	22	13.7	33	20.0	29	17.8	40	24.8	33	20.8
African American/Black	924	955.1	832	850.2	780	802.9	820	863.0	622	673.7	614	691.6	613	718.8
Hispanic/Latino	464	72.1	309	46.6	291	42.7	341	49.0	369	53.4	500	73.3	567	84.2
White	161	33.6	129	27.4	126	28.1	130	29.4	151	35.1	190	45.4	184	45.3

* Rate per 100,000 age- and gender-specific population

Data Sources: California Department of Public Health, STD Control Branch

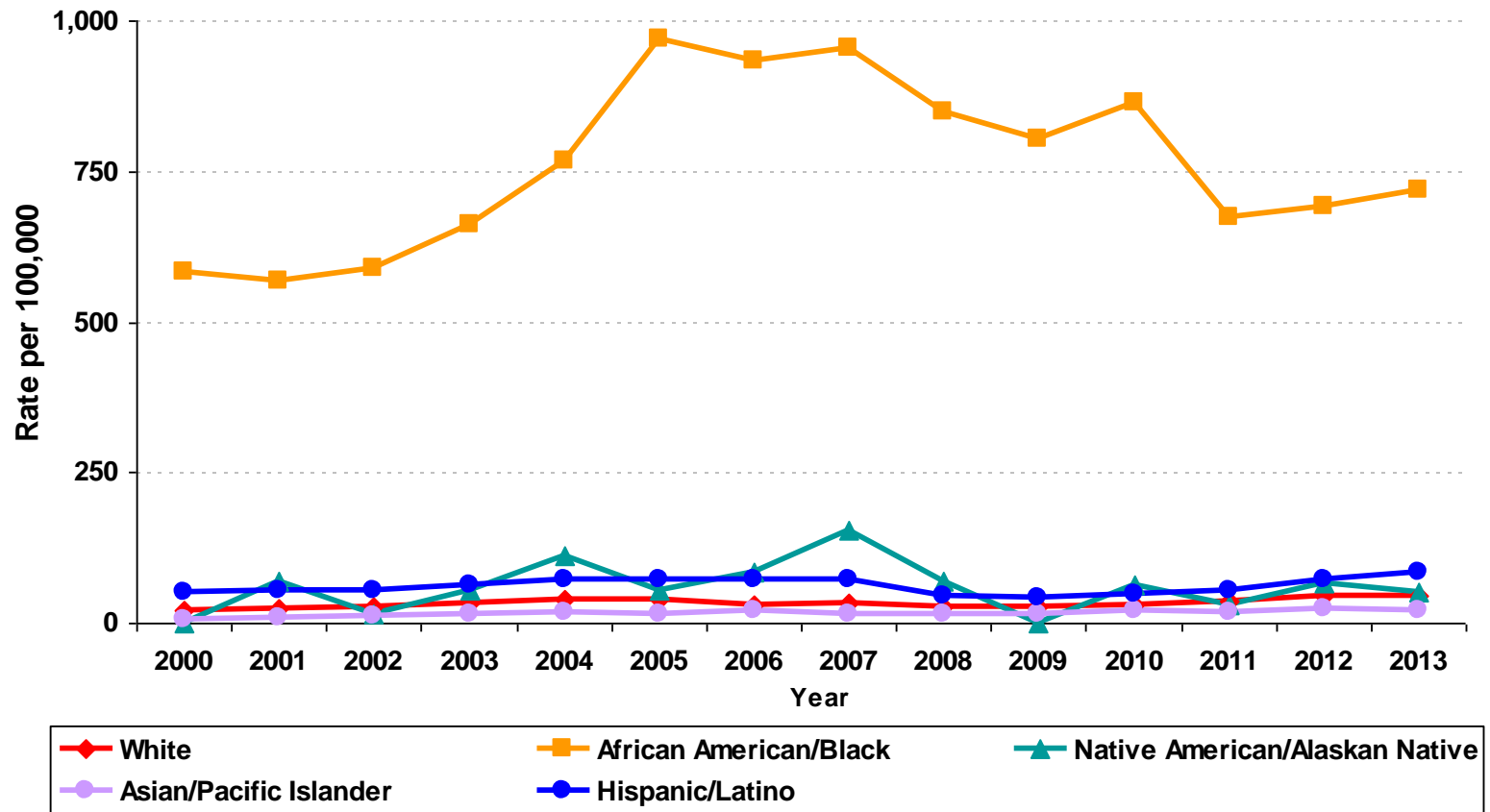
State of California, Department of Finance, *Race/Hispanics Population with Age and Gender Detail, 2000-2010*. Sacramento, California, September 2012

State of California, Department of Finance, *Report P-3: State and County Population Projections by Race/Ethnicity, Detailed Age, and Gender, 2010-2060*.

Sacramento, California, December 2014

Prepared by: California Department of Public Health, STD Control Branch, January 2015

Gonorrhea Rates for Males Age 15-19 by Race/Ethnicity California, 2000–2013



Data Sources: California Department of Public Health, STD Control Branch
 State of California, Department of Finance, *Race/Hispanics Population with Age and Gender Detail, 2000-2010*. Sacramento, California, September 2012
 State of California, Department of Finance, *Report P-3: State and County Population Projections by Race/Ethnicity, Detailed Age, and Gender, 2010-2060*.
 Sacramento, California, December 2014
 Prepared by: California Department of Public Health, STD Control Branch, January 2015

P&S Syphilis Rates for Adolescent Females by Age Group California, 2000–2013

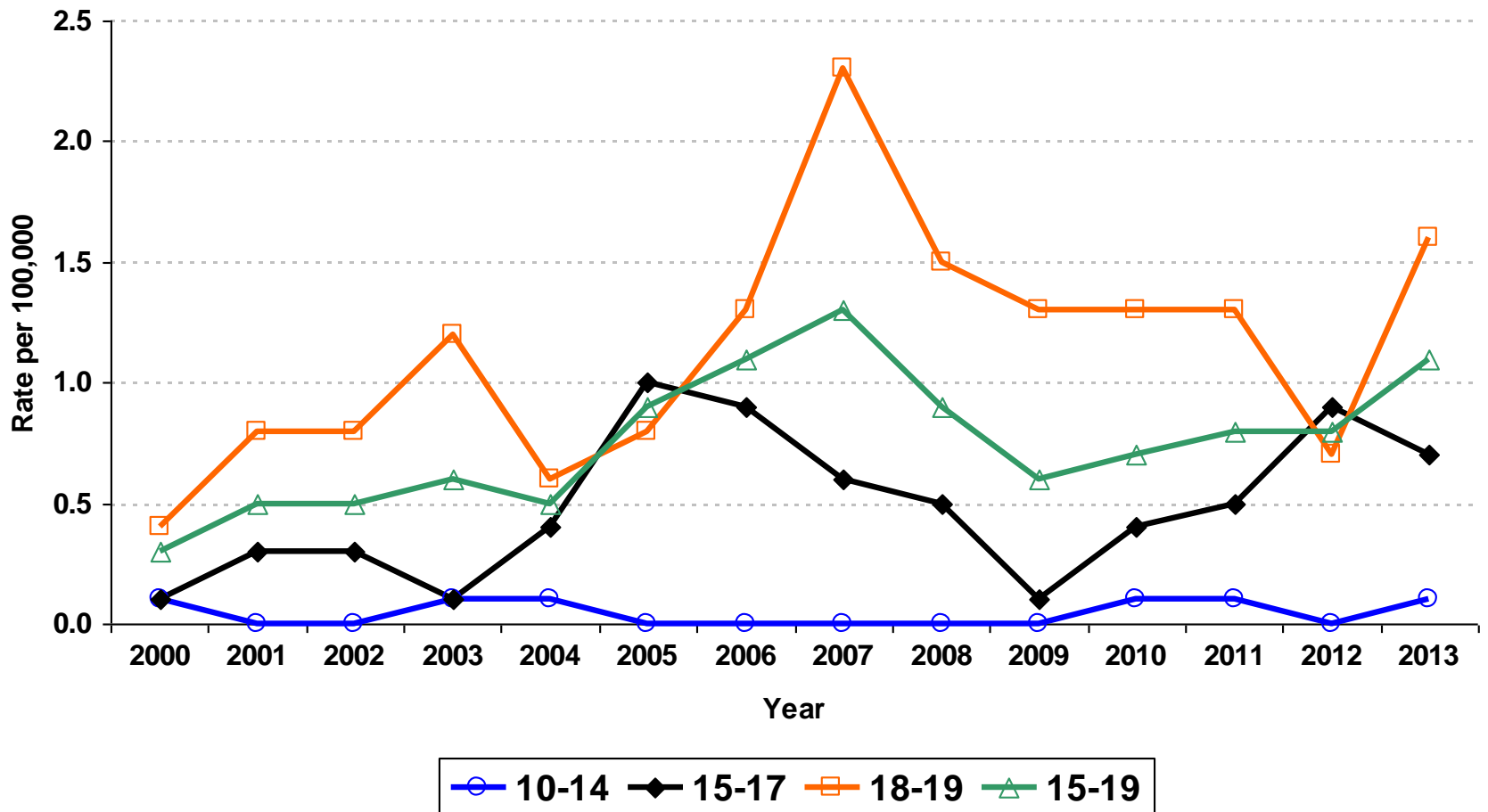
P&S Syphilis Rates* for Adolescent Females by Age Group California, 2000–2013														
Age Group	2000		2001		2002		2003		2004		2005		2006	
	Cases	Rate	Cases	Rate	Cases	Rate	Cases	Rate	Cases	Rate	Cases	Rate	Cases	Rate
10-14	1	0.1	0	0.0	0	0.0	2	0.1	2	0.1	0	0.0	0	0.0
15-17	1	0.1	2	0.3	2	0.3	1	0.1	3	0.4	8	1.0	7	0.9
18-19	2	0.4	4	0.8	4	0.8	6	1.2	3	0.6	4	0.8	7	1.3
15-19	3	0.3	6	0.5	6	0.5	7	0.6	6	0.5	12	0.9	14	1.1

Age Group	2007		2008		2009		2010		2011		2012		2013	
	Cases	Rate	Cases	Rate	Cases	Rate	Cases	Rate	Cases	Rate	Cases	Rate	Cases	Rate
10-14	0	0.0	0	0.0	0	0.0	1	0.1	1	0.1	0	0.0	1	0.1
15-17	5	0.6	4	0.5	1	0.1	3	0.4	4	0.5	7	0.9	5	0.7
18-19	12	2.3	8	1.5	7	1.3	7	1.3	7	1.3	4	0.7	9	1.6
15-19	17	1.3	12	0.9	8	0.6	10	0.7	11	0.8	11	0.8	14	1.1

* Rate per 100,000 population

Data Sources: California Department of Public Health, STD Control Branch
 State of California, Department of Finance, *Race/Hispanics Population with Age and Gender Detail, 2000-2010*. Sacramento, California, September 2012
 State of California, Department of Finance, *Report P-3: State and County Population Projections by Race/Ethnicity, Detailed Age, and Gender, 2010-2060*.
 Sacramento, California, December 2014
 Prepared by: California Department of Public Health, STD Control Branch, January 2015

P&S Syphilis Rates for Adolescent Females by Age Group California, 2000–2013



Data Sources: California Department of Public Health, STD Control Branch
 State of California, Department of Finance, *Race/Hispanics Population with Age and Gender Detail, 2000-2010*. Sacramento, California, September 2012
 State of California, Department of Finance, *Report P-3: State and County Population Projections by Race/Ethnicity, Detailed Age, and Gender, 2010-2060*.
 Sacramento, California, December 2014
 Prepared by: California Department of Public Health, STD Control Branch, January 2015

P&S Syphilis Rates for Females Age 15-19 by Race/Ethnicity California, 2000–2013

P&S Syphilis Rates* by Race/Ethnicity, For Female California Residents Age 15-19, 2000–2013														
Race/Ethnicity	2000		2001		2002		2003		2004		2005		2006	
	Cases	Rate	Cases	Rate	Cases	Rate	Cases	Rate	Cases	Rate	Cases	Rate	Cases	Rate
Native American/Alaskan Native	0	0.0	0	0.0	0	0.0	0	0.0	0	0.0	0	0.0	0	0.0
Asian/Pacific Islander	0	0.0	0	0.0	1	0.7	0	0.0	0	0.0	0	0.0	0	0.0
African American/Black	1	1.2	2	2.4	1	1.2	1	1.1	2	2.2	2	2.2	5	5.4
Hispanic/Latino	1	0.2	4	0.8	3	0.6	5	1.0	4	0.7	8	1.4	8	1.4
White	1	0.2	0	0.0	1	0.2	1	0.2	0	0.0	2	0.4	1	0.2

Race/Ethnicity	2007		2008		2009		2010		2011		2012		2013	
	Cases	Rate	Cases	Rate	Cases	Rate	Cases	Rate	Cases	Rate	Cases	Rate	Cases	Rate
Native American/Alaskan Native	0	0.0	0	0.0	0	0.0	0	0.0	1	16.7 [†]	0	0.0	0	0.0
Asian/Pacific Islander	0	0.0	0	0.0	0	0.0	1	0.6	1	0.7	1	0.7	0	0.0
African American/Black	1	1.1	3	3.2	5	5.4	7	7.8	5	5.7	4	4.8	3	3.7
Hispanic/Latino	13	2.2	6	1.0	3	0.5	0	0.0	1	0.2	5	0.8	8	1.2
White	2	0.4	2	0.5	0	0.0	2	0.5	2	0.5	1	0.3	3	0.8

* Rate per 100,000 age- and gender-specific population

† Trends should be interpreted with caution when there are very low case counts as noted in the companion table by race/ethnicity; similarly, changes in population counts due to the 2010 census, especially for relatively small race/ethnicity groups, may also result in unstable rate changes. The increase in the rate for this NA/AN age group is based on 1 case reported in 2011 compared to 0 in other years.

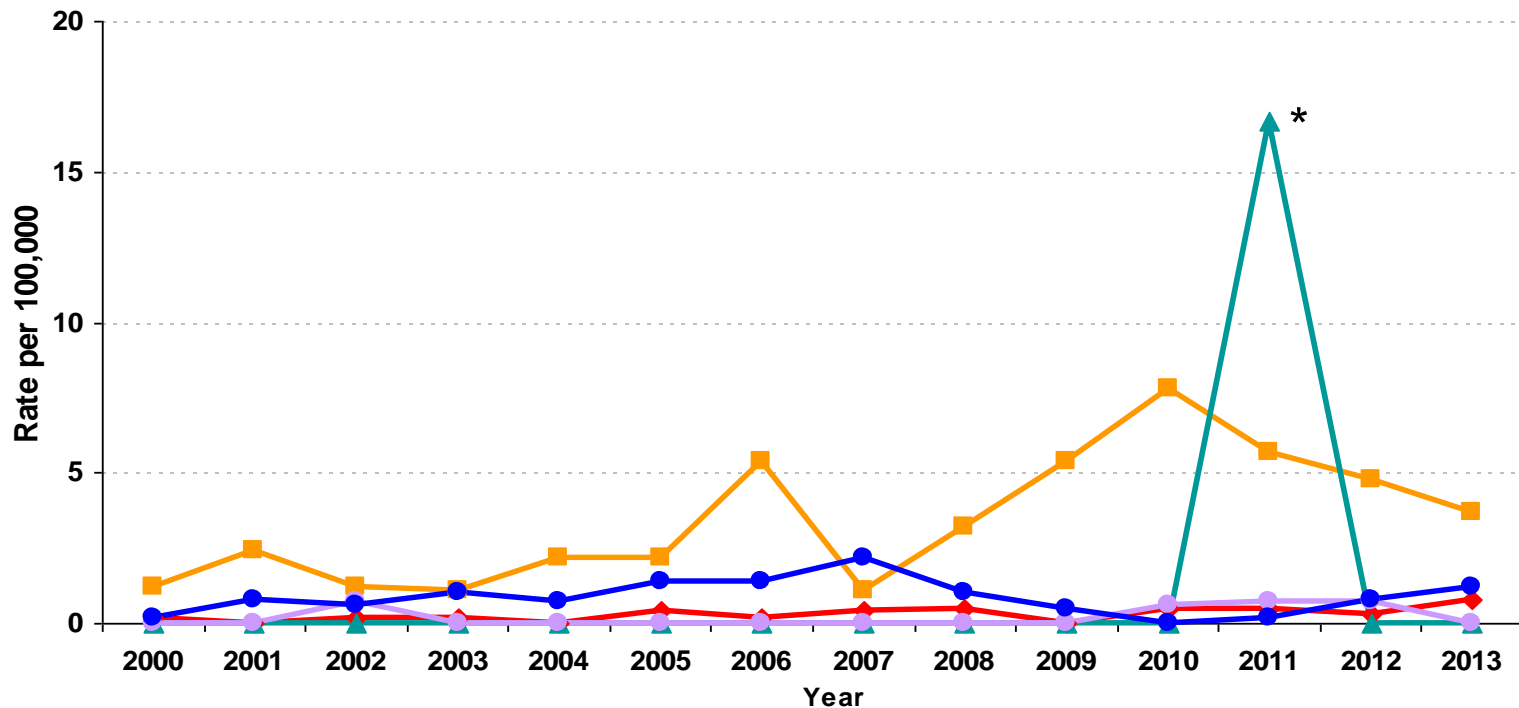
Data Sources: California Department of Public Health, STD Control Branch

State of California, Department of Finance, *Race/Hispanics Population with Age and Gender Detail, 2000-2010*. Sacramento, California, September 2012

State of California, Department of Finance, *Report P-3: State and County Population Projections by Race/Ethnicity, Detailed Age, and Gender, 2010-2060*. Sacramento, California, December 2014

Prepared by: California Department of Public Health, STD Control Branch, January 2015

P&S Syphilis Rates for Females Age 15-19 by Race/Ethnicity California, 2000–2013



◆ White ■ African American/Black ▲ Native American/Alaskan Native
● Asian/Pacific Islander ● Hispanic/Latino

* Trends should be interpreted with caution when there are very low case counts as noted in the companion table by race/ethnicity; similarly, changes in population counts due to the 2010 census, especially for relatively small race/ethnicity groups, may also result in unstable rate changes. The increase in the rate for this NA/AN age group is based on 1 case reported in 2011 compared to 0 in other years.

Data Sources: California Department of Public Health, STD Control Branch
 State of California, Department of Finance, *Race/Hispanics Population with Age and Gender Detail, 2000-2010*. Sacramento, California, September 2012
 State of California, Department of Finance, *Report P-3: State and County Population Projections by Race/Ethnicity, Detailed Age, and Gender, 2010-2060*. Sacramento, California, December 2014
 Prepared by: California Department of Public Health, STD Control Branch, January 2015

P&S Syphilis Rates for Adolescent Males by Age Group California, 2000–2013

P&S Syphilis Rates* for Adolescent Males by Age Group California, 2000–2013														
Age Group	2000		2001		2002		2003		2004		2005		2006	
	Cases	Rate	Cases	Rate	Cases	Rate	Cases	Rate	Cases	Rate	Cases	Rate	Cases	Rate
10-14	0	0.0	0	0.0	1	0.1	0	0.0	0	0.0	0	0.0	1	0.1
15-17	2	0.3	4	0.5	3	0.4	3	0.4	6	0.7	8	1.0	13	1.5
18-19	1	0.2	7	1.3	7	1.3	9	1.7	8	1.5	13	2.3	22	3.9
15-19	3	0.2	11	0.9	10	0.8	12	0.9	14	1.0	21	1.5	35	2.5

Age Group	2007		2008		2009		2010		2011		2012		2013	
	Cases	Rate	Cases	Rate	Cases	Rate	Cases	Rate	Cases	Rate	Cases	Rate	Cases	Rate
10-14	1	0.1	0	0.0	1	0.1	2	0.2	0	0.0	0	0.0	3	0.2
15-17	6	0.7	16	1.8	13	1.5	9	1.1	20	2.4	16	2.0	22	2.8
18-19	39	6.9	42	7.3	51	8.6	55	9.1	57	9.5	66	11.1	107	18.4
15-19	45	3.1	58	4.0	64	4.4	64	4.4	77	5.4	82	5.8	129	9.3

* Rate per 100,000 population

Data Sources: California Department of Public Health, STD Control Branch

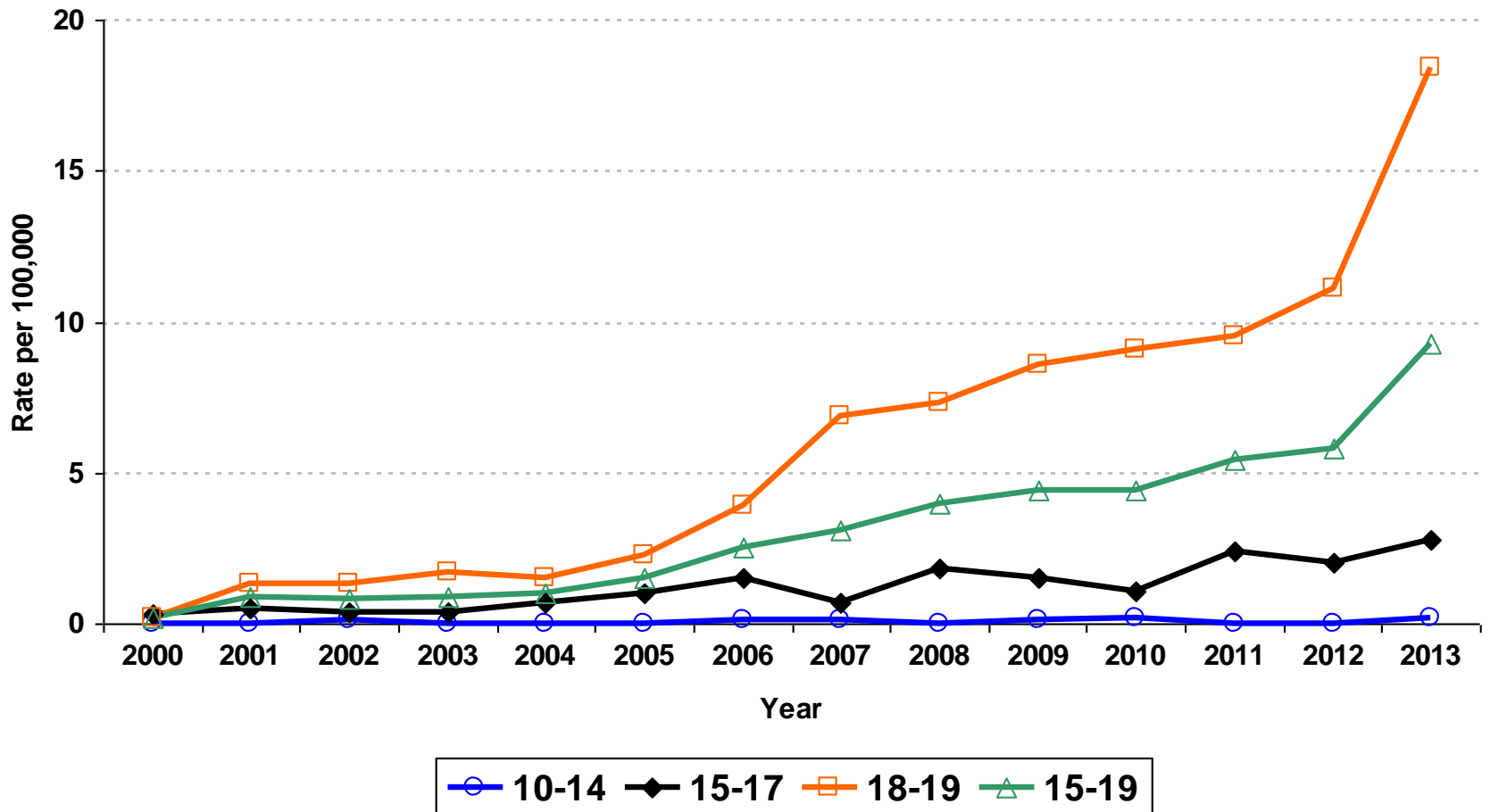
State of California, Department of Finance, *Race/Hispanics Population with Age and Gender Detail, 2000-2010*. Sacramento, California, September 2012

State of California, Department of Finance, *Report P-3: State and County Population Projections by Race/Ethnicity, Detailed Age, and Gender, 2010-2060*.

Sacramento, California, December 2014

Prepared by: California Department of Public Health, STD Control Branch, January 2015

P&S Syphilis Rates for Adolescent Males by Age Group California, 2000–2013



Data Sources: California Department of Public Health, STD Control Branch
 State of California, Department of Finance, *Race/Hispanics Population with Age and Gender Detail, 2000-2010*. Sacramento, California, September 2012
 State of California, Department of Finance, *Report P-3: State and County Population Projections by Race/Ethnicity, Detailed Age, and Gender, 2010-2060*.
 Sacramento, California, December 2014
 Prepared by: California Department of Public Health, STD Control Branch, January 2015

P&S Syphilis Rates for Males Age 15-19 by Race/Ethnicity California, 2000–2013

P&S Syphilis Rates* by Race/Ethnicity, For Male California Residents Age 15-19, 2000–2013														
Race/Ethnicity	2000		2001		2002		2003		2004		2005		2006	
	Cases	Rate	Cases	Rate	Cases	Rate	Cases	Rate	Cases	Rate	Cases	Rate	Cases	Rate
Native American/Alaskan Native	0	0.0	0	0.0	0	0.0	0	0.0	0	0.0	0	0.0	0	0.0
Asian/Pacific Islander	0	0.0	0	0.0	1	0.7	0	0.0	2	1.3	0	0.0	0	0.0
African American/Black	0	0.0	1	1.1	1	1.1	3	3.3	2	2.2	4	4.3	14	14.7
Hispanic/Latino	3	0.6	9	1.7	7	1.3	9	1.6	9	1.6	8	1.3	13	2.1
White	0	0.0	1	0.2	1	0.2	0	0.0	1	0.2	9	1.9	6	1.2

Race/Ethnicity	2007		2008		2009		2010		2011		2012		2013	
	Cases	Rate	Cases	Rate	Cases	Rate	Cases	Rate	Cases	Rate	Cases	Rate	Cases	Rate
Native American/Alaskan Native	1	13.9	0	0.0	0	0.0	1	15.5	1	15.8	0	0.0	0	0.0
Asian/Pacific Islander	0	0.0	3	1.8	6	3.7	1	0.6	2	1.2	3	1.9	7	4.4
African American/Black	15	15.5	17	17.4	12	12.4	19	20.0	20	21.7	15	16.9	26	30.5
Hispanic/Latino	19	3.0	30	4.5	37	5.4	31	4.5	40	5.8	41	6.0	67	9.9
White	9	1.9	7	1.5	9	2.0	10	2.3	10	2.3	22	5.3	16	3.9

* Rate per 100,000 age- and gender-specific population

Note: Trends should be interpreted with caution when there are very low case counts as noted in the companion table by race/ethnicity; similarly, changes in population counts due to the 2010 census, especially for relatively small race/ethnicity groups, may also result in unstable rate changes.

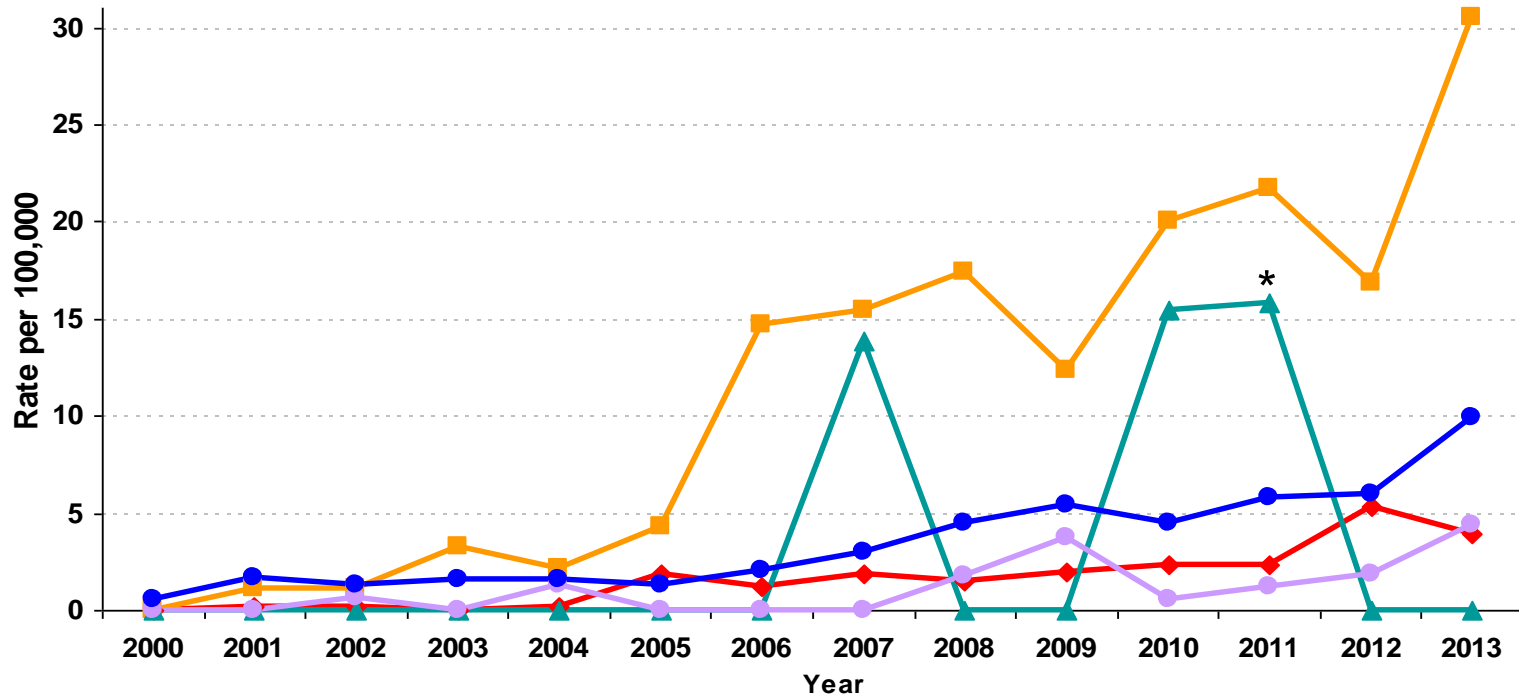
Data Sources: California Department of Public Health, STD Control Branch

State of California, Department of Finance, *Race/Hispanics Population with Age and Gender Detail, 2000-2010*. Sacramento, California, September 2012

State of California, Department of Finance, *Report P-3: State and County Population Projections by Race/Ethnicity, Detailed Age, and Gender, 2010-2060*. Sacramento, California, December 2014

Prepared by: California Department of Public Health, STD Control Branch, January 2015

P&S Syphilis Rates for Males Age 15-19 by Race/Ethnicity California, 2000–2013



◆ White ■ African American/Black ▲ Native American/Alaskan Native
● Asian/Pacific Islander ● Hispanic/Latino

* Trends should be interpreted with caution when there are very low case counts as noted in the companion table by race/ethnicity; similarly, changes in population counts due to the 2010 census, especially for relatively small race/ethnicity groups, may also result in unstable rate changes.

Data Sources: California Department of Public Health, STD Control Branch
 State of California, Department of Finance, *Race/Hispanics Population with Age and Gender Detail, 2000-2010*. Sacramento, California, September 2012
 State of California, Department of Finance, *Report P-3: State and County Population Projections by Race/Ethnicity, Detailed Age, and Gender, 2010-2060*. Sacramento, California, December 2014
 Prepared by: California Department of Public Health, STD Control Branch, January 2015

Chlamydia Prevalence Monitoring for Adolescent Females by Age Group California, 2000–2013

Chlamydia Prevalence Monitoring – Family Planning Clinics, Percent Positive for Adolescent Females by Age Group California, 2000–2013

Age Group	2000	2001	2002	2003	2004	2005	2006	2007	2008	2009	2010	2011	2012	2013
10-14	15.2	9.4	7.9	4.6	7.6	5.4	9.5	4.9	6.3	10.0	3.8	4.0	3.5	5.1
15-17	9.7	7.8	6.9	6.7	7.4	7.5	8.9	6.8	8.1	9.0	4.4	5.2	5.2	4.3
18-19	8.4	8.0	6.3	6.7	7.7	7.5	7.6	7.6	8.8	10.2	5.2	6.0	5.8	5.9
15-19	9.0	7.9	6.6	6.7	7.6	7.5	8.1	7.3	8.5	9.8	4.9	5.7	5.6	5.3

Chlamydia Prevalence Monitoring – STD Clinics, Percent Positive for Adolescent Females by Age Group California, 2000–2013

Age Group	2000	2001	2002	2003	2004	2005	2006	2007	2008	2009	2010	2011	2012	2013
10-14*	19.4	8.2	20.0	8.9	20.0	16.7	28.6	12.5	33.3	50.0	0.0	0.0	25.0	0.0
15-17*	21.8	18.1	11.1	21.7	15.7	20.0	20.9	20.2	20.0	5.4	16.0	19.2	0.0	18.8
18-19	13.2	17.5	12.1	18.5	20.8	19.0	19.2	17.6	12.1	20.0	13.3	12.9	17.5	18.4
15-19	17.5	17.8	11.6	20.1	18.3	19.5	20.0	18.8	14.5	16.1	14.0	14.8	14.9	18.5

* STD clinic trends for ages 10-14 and 15-17 should be interpreted with caution as the number tested was very low

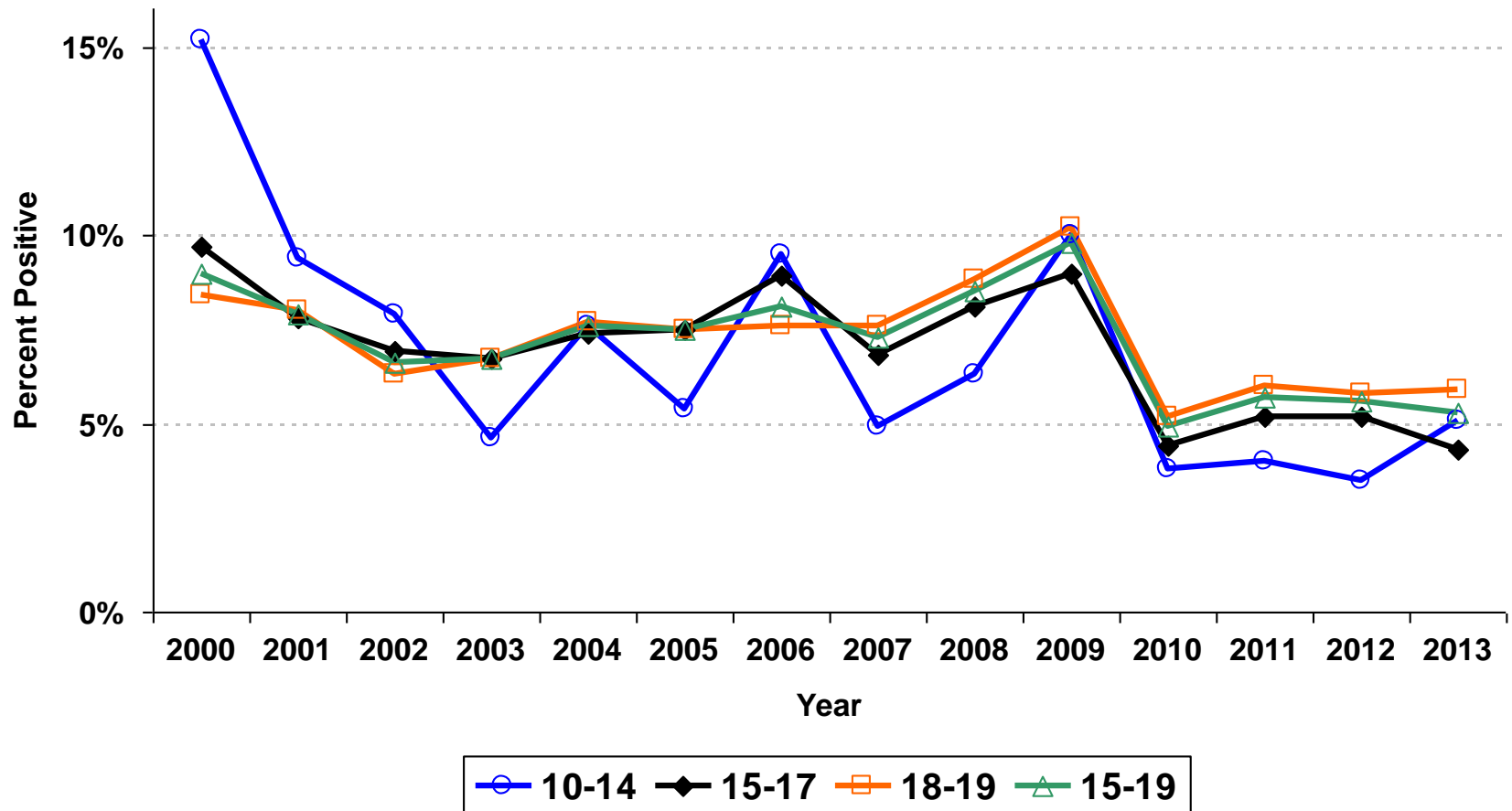
Data Sources: California Department of Public Health, STD Control Branch

Prepared by: California Department of Public Health, STD Control Branch, June 2015

Chlamydia Prevalence Monitoring – Family Planning Clinics

Percent Positive for Adolescent Females by Age Group

California, 2000–2013

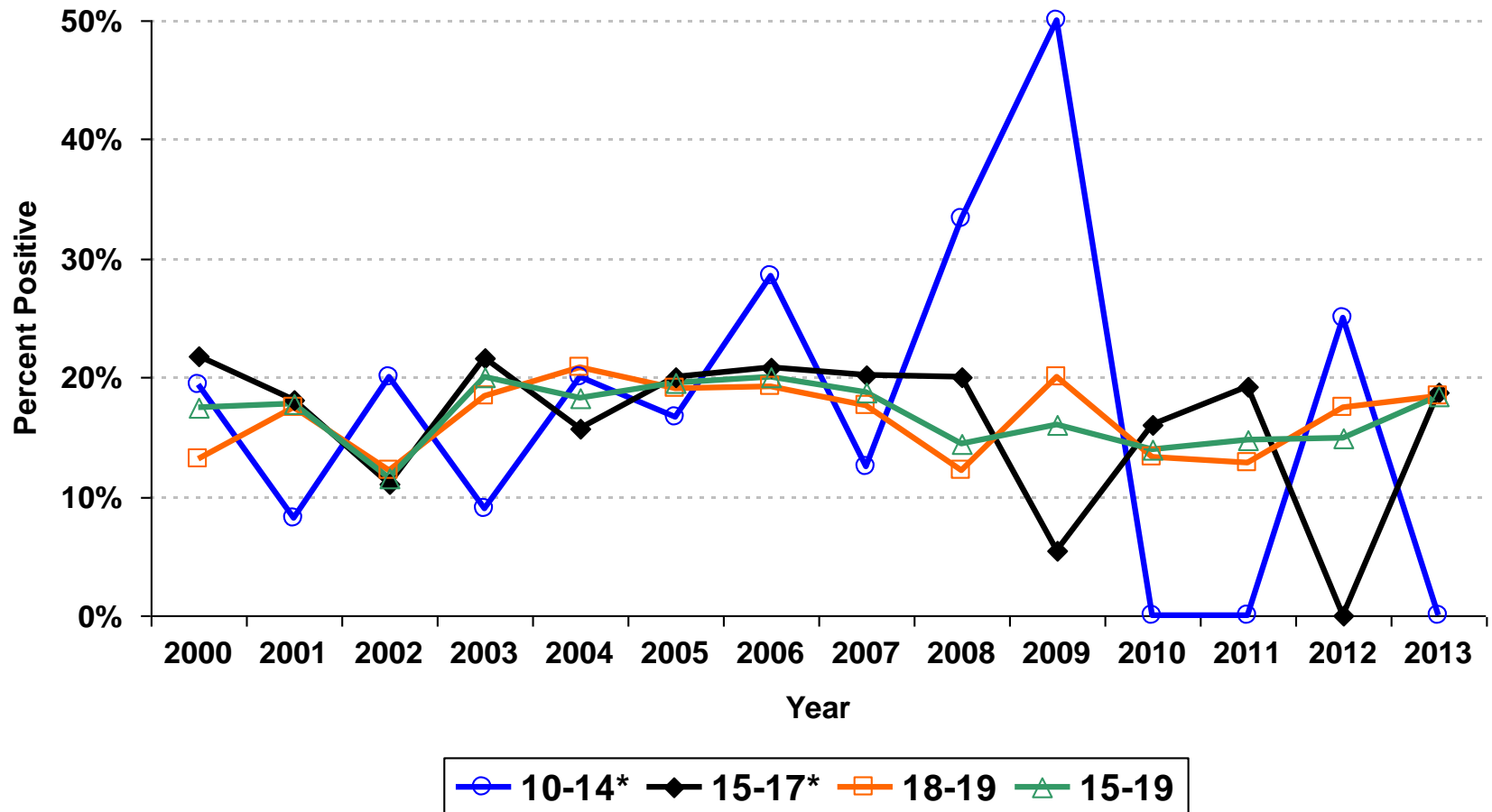


Data Sources: California Department of Public Health, STD Control Branch
 Prepared by: California Department of Public Health, STD Control Branch, June 2015

Chlamydia Prevalence Monitoring – STD Clinics

Percent Positive for Adolescent Females by Age Group

California, 2000–2013



* STD clinic trends for ages 10-14 and 15-17 should be interpreted with caution as the number tested was very low
 Data Sources: California Department of Public Health, STD Control Branch
 Prepared by: California Department of Public Health, STD Control Branch, June 2015

Chlamydia Prevalence Monitoring for Adolescent Females by Age Group California, 2000–2013

Chlamydia Prevalence Monitoring – Juvenile Detention, Percent Positive for Adolescent Females by Age Group California, 2000–2013

Age Group	2000	2001	2002	2003	2004	2005	2006	2007	2008	2009	2010	2011	2012	2013
10-14	15.9	11.5	11.1	10.0	10.5	11.1	10.4	9.5	6.9	8.6	8.6	8.0	8.8	9.1
15-17	10.9	12.1	14.1	13.4	14.0	13.1	12.0	10.8	11.5	10.6	11.0	12.3	12.5	13.0
18-19	14.8	5.4	15.8	14.6	14.4	13.4	11.7	14.6	11.7	8.4	10.2	7.8	12.0	10.2
15-19	11.3	11.4	14.2	13.6	14.1	13.1	12.0	11.0	11.5	10.4	11.0	12.0	12.5	12.8

Chlamydia Prevalence Monitoring – Northern CA MCO, Percent Positive for Adolescent Females by Age Group California, 2000–2013

Age Group	2000	2001	2002	2003	2004	2005	2006	2007	2008	2009	2010	2011	2012	2013
10-14	6.3	6.5	5.1	4.3	4.8	3.5	4.5	4.6	5.1	3.7	2.6	2.5	1.8	2.2
15-17	5.8	5.9	5.3	6.2	4.5	4.4	5.3	5.4	5.3	5.2	5.0	4.6	4.4	4.0
18-19	5.1	5.3	5.1	4.9	4.8	4.6	6.9	6.8	6.9	7.1	7.3	7.0	7.0	6.5
15-19	5.4	5.6	5.2	5.5	4.6	4.5	6.1	6.1	6.1	6.1	6.0	5.7	5.6	5.2

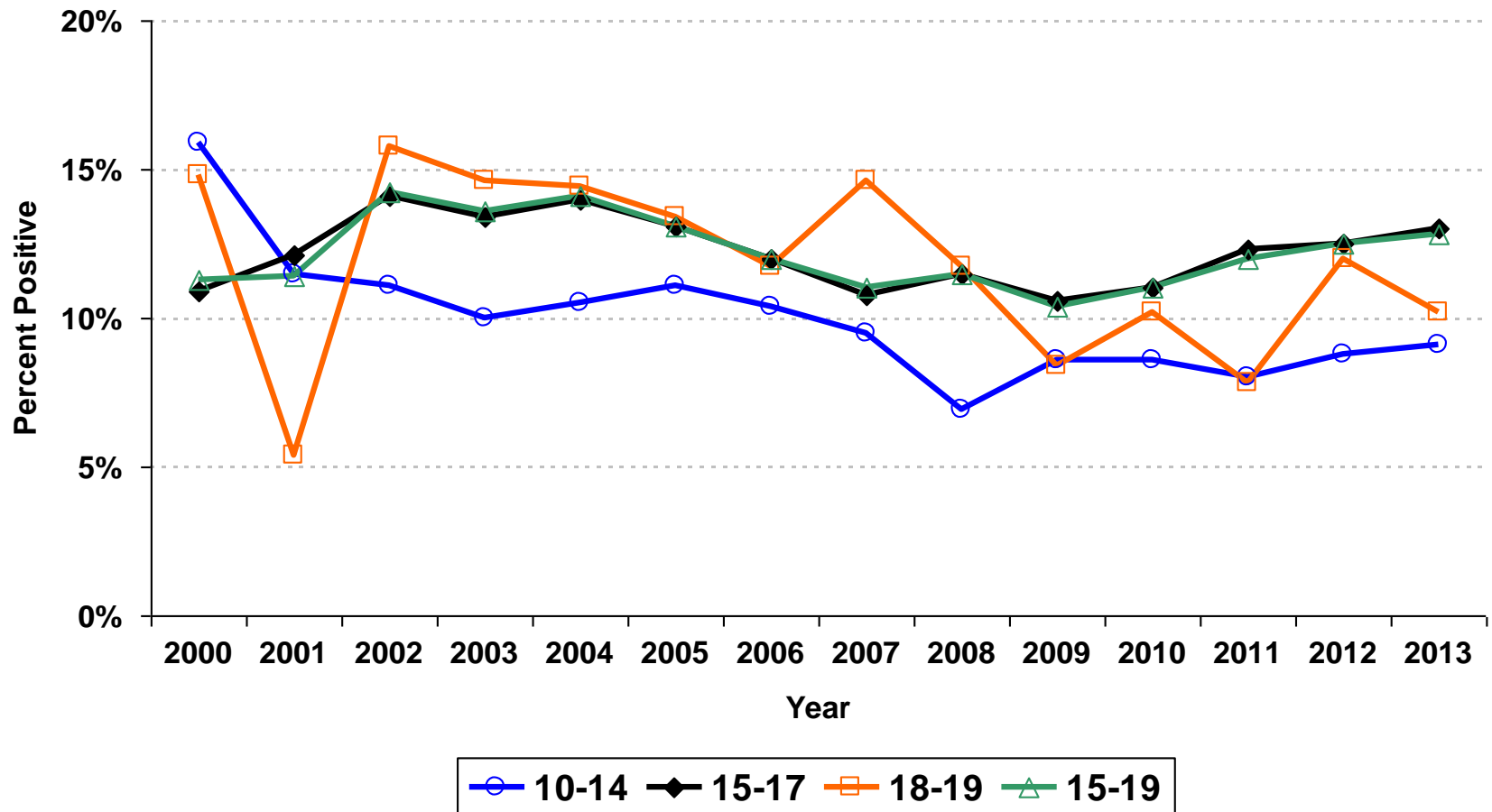
Data Sources: California Department of Public Health, STD Control Branch; Northern California Managed Care Organization (MCO)

Prepared by: California Department of Public Health, STD Control Branch, June 2015

Chlamydia Prevalence Monitoring – Juvenile Detention

Percent Positive for Adolescent Females by Age Group

California, 2000–2013

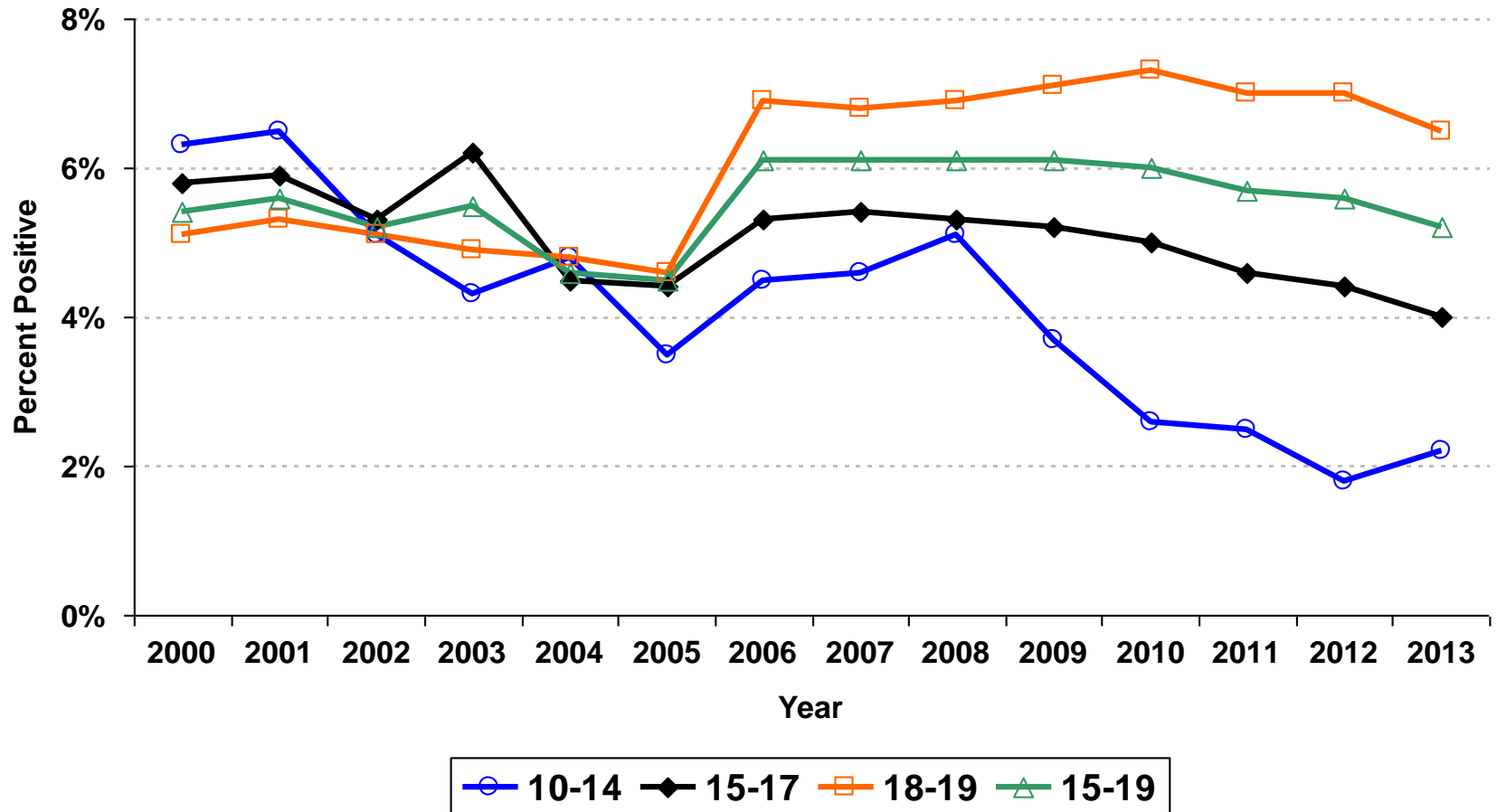


Data Sources: California Department of Public Health, STD Control Branch
 Prepared by: California Department of Public Health, STD Control Branch, June 2015

Chlamydia Prevalence Monitoring – Northern CA MCO

Percent Positive for Adolescent Females by Age Group

California, 2000–2013



Data Sources: California Department of Public Health, STD Control Branch; Northern California Managed Care Organization (MCO)
 Prepared by: California Department of Public Health, STD Control Branch, June 2015